

Name of Program(s): Luminary 1D

Originator: McClary

Organization: MIT/IL

Date: 11/25/69

Description of Change:

change the coding in SPEEDRUN (during SERVICE) to compute LATVEL and FORVEL regardless of position of MODE SELECT switch. - addition of 6 six words

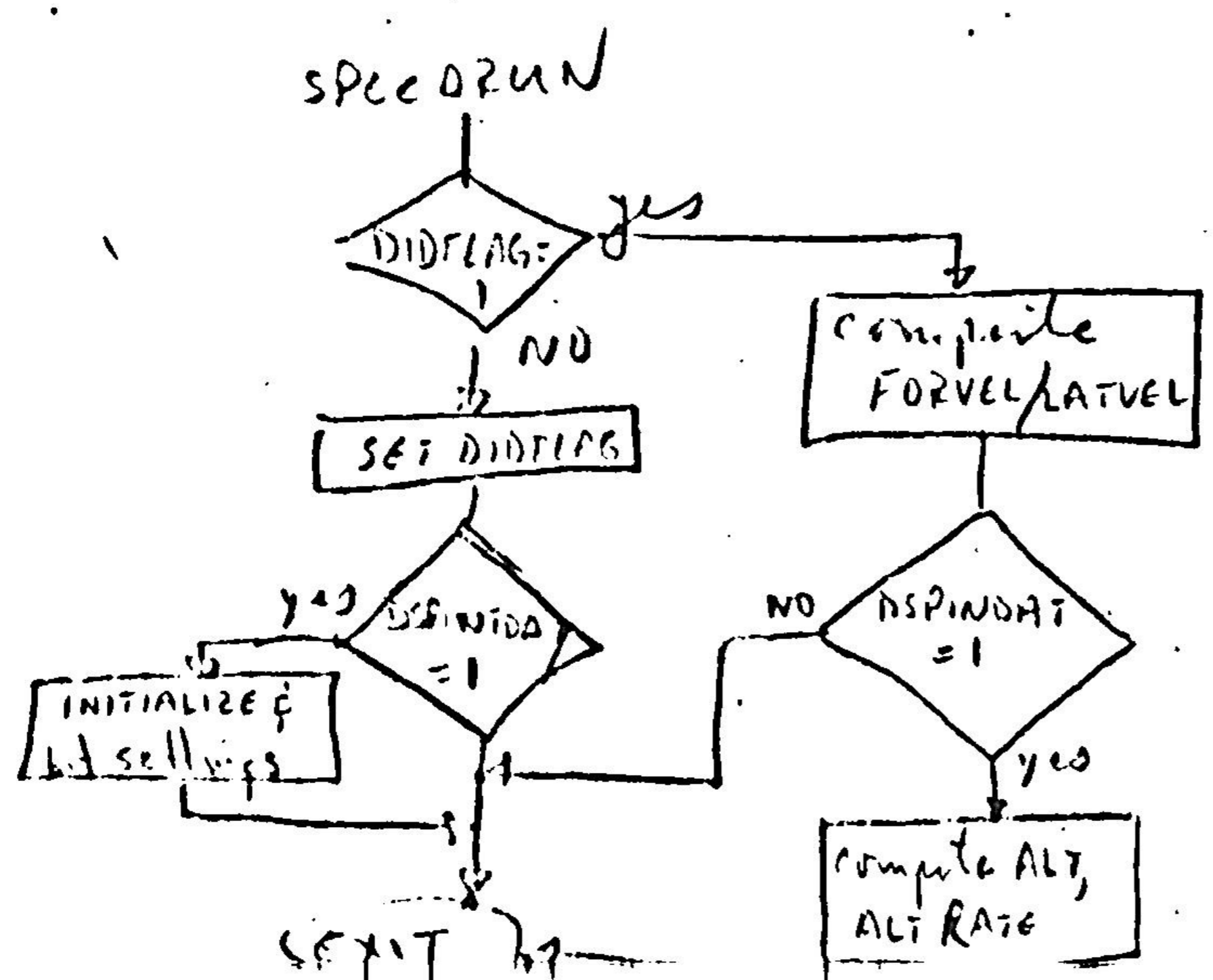
Reason:

The FORWARD VELOCITY (FORVEL) is not computed for display on X pointer or for NOUNGO if the MODE SELECT (which controls which system will display on the X pointer or tape reader) switch is in any position but ~~ABS~~ **PGNCS**

Assigned to:

W. Bernickovich

Comments:



Approved by: M. Hamilton

Date: 12/3/69