

JAPANESE MONOGRAPH NO. 32

MAR 14 1962

Southeast Area Air Operations Record
Nov. 1942 - Apr. 1944

5ap62

PREFACE

Through Instruction No. 126 to Japanese Government, 12 Oct 45, entitled "Institution for war Records Investigation", steps were initiated to exploit military historical records and official reports of the Japanese War Ministry and the Japanese General Staff.* Upon the dissolution of the War Ministry and the General Staff, and the transfer of their former functions to the Demobilization Bureau, the general research job continued and resulted in the development of a series of historical monographs. Detailed instructions covering the preparation of these monographs were included in memoranda 15 December 1945 and 21 November 1946, subject "Japanese Operational histories".

The basic material contained in this operational record was developed by former officers, on duty in command and staff units within major units during the period of operations. It should be noted at once, that the enormous destruction by aerial bombardment and fire has practically wiped out the Tokyo records; much of this material was reconstructed from memory.

The paucity of original orders, plans and unit journals, which are normally essential in the preparation of this type of record, most of which were lost or destroyed during field operations or bombing raids rendered the task of compilation most difficult; particularly distressing has been the complete lack of official strength reports, normal in A-G or G-3 records. However, while many of the important orders, plans and estimates have been reconstructed from memory and therefore are not textually identical with the originals, they are believed to be generally accurate and reliable. Further data as a result of continuing research and the occasional recovery of hitherto unavailable original documents will be covered in the subsequent publication of "supplements" by the Demobilization Bureau.

* The action under this memorandum and incidental detailed instructions, which followed, were initiated by the Assistant Chief of Staff, G-2, GHQ, charged with responsibility for execution of the program under G.O. No. 9, SCAP, 2 October 1945.

In order to protect the interest of the United States, in the exploitation of Japanese Military Information, sub-paragraph 4 of G.O. No. 9 further provided for the screening of enemy documents and established inventories in Japanese Governmental archives. Careful examination of the first records submitted by the Japanese Government in the summer of 1946 detected a misconception on the part of the Japanese as to what should be included in comparative histories; in a memorandum issued by Assistant Chief of Staff, G-2, on 21 November 1946, the Imperial Japanese Government was directed to record the operations of the Japanese forces more extensively. The G-2 Section thereafter assumed coordination of the entire program, including the establishment of a small historical research section within the ATIS (Allied Translator and Interpreter Section.)

RECORD OF SOUTHEAST PACIFIC OPERATIONS

PART 5

AIR FORCE OPERATIONS

(Notes)

Drafter- non-official member of the 1st Demobilization Board:

Former Lt. Col. KOJI TANAKA

A. Most of the materials in this volume ~~were~~^{was} collected as follows:

- I. Recollection of the drafter.
2. Recollection of the following officers who joined the south-eastern area operation and some of their personal records.

Former Col. RINSUKE KANEKO

Former Lt. Col. SAKUYUKI TAKAJI

Former Major TOSHIO KINUGASA

Former Major MASAYUKI UCHIDA

B. Since most of the materials ~~were~~^{was} compiled from personal memory and records some parts are minutely described where as other parts have only a scanty description. The accuracy of some of the cases cannot be guaranteed.

Contents




Chapter 1	General situation o/a November 1942	... P. 1
Chapter 2	Air Operation up to March 1943	... P. 2
Chapter 3	General situation o/a March 1943	... P. 7
Chapter 4	Air Operation up to July 1943	... P. 11
Chapter 5	Air Operation up to the end of 1943	... P. 15
Chapter 6	Air Operation up to September 1944	... P. 35

Attached Table

No. 1. Outline of the change of commanders and subordinates in the south eastern area air operation units from September 1942 to August 1943.

No. 2. Outline of the change of commanders and subordinates in the south-eastern area air operation units from September 1943 to March 1944

In this volume the following military symbols, and abbreviations are used.

HA	Area Army
A	Army
FA	Air Force
FD	Air Division
FB	Air Brigade
F	Air Regiment
Fs	Independent Air Unit
Fc	Independent Air Company
ff	Air sector HQ
ab	Air Field Battalion
ac	Air Field Company
FTL	Air Signal Regiment
FN	Air Intelligence Unit
"KOSHUSHO"	Air Repair Depot
"KOHOSHO"	Air Supply Depot
"ISHUHAN"	Mobile Air Repair Section
"KI"	Meteorological Unit
"HISETSU"	Airfield Construction Unit
"RIKUKINCHU"	Land Duty Company
"SUIKINCHU"	Sea Duty Company
"KENKINCHU"	Construction Duty Unit
	Air Force HQs
	Air Division HQs
	Air Brigade HQs
AA	Anti-Aircraft Gun
	Fighter Plane
	Assault Plane
o	Single engine light bomber
oo	Twin engines light bomber
●	Heavy bomber
+	HQ Reconnaissance plane
-	Army reconnaissance plane
v	Direct co-operation reconnaissance plane

1

Transport plane (cargo plane) }

#

Air Field

Chapter I- General situation o/a November 1942.

In the operation to recapture ~~the~~ ^{the} GUADALCANAL under the combined forces of army and navy suffered enormous losses ~~at the time of~~ ^{SINCE} the enemy landing in August 1942. The situation worsened due to the failure in the general attack by the 2nd Division in the last ten days of October that marked the turning point until even the supply and transportation of provisions for the 30,000 soldiers on GUADALCANAL Island became very difficult.

Air Situation

On or about the end of November the enemy had approximately 100 planes on GUADALCANAL. At the same time the air strength located at bases in PORT MORESBY and LABI in NEW GUINEA AREA increased to 100-150 planes. Moreover powerful air units were located at bases on ~~ESPIRITU SANTO~~ ^{ESPIRITU-SANTO} (TN-?) Islands for the SOLOMON operation and at bases in AUSTRALIA for the NEW GUINEA operation.

The area south of the Central SOLOMON Islands (area south and around SHORTLAND) and the sea area off the Northern coast of Eastern NEW GUINEA were under the complete control of the enemy using small planes. Furthermore the ocean area south of the line running east and west of RABAU was under constant threat by enemy planes of large size.

In the south-eastern area the naval air units took complete charge from the beginning of the operation and were successful in attacking ships in air combats. However we also suffered great losses and due to the impossibility of increasing our strength which had to be depended solely on national power, the enemy began to take the offensive role until we lost complete control of the air as formerly mentioned.

The average number of the true strength of the naval air force was as follows o/a the last ten days of November:

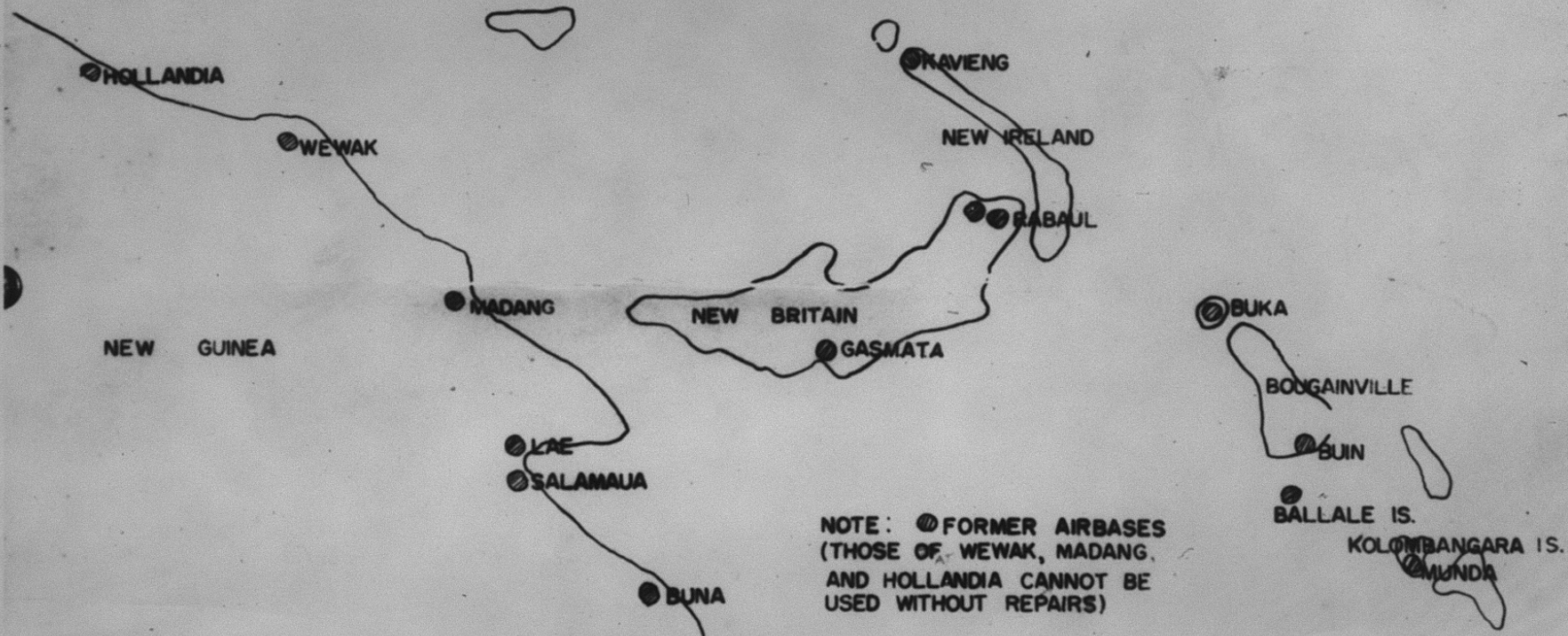
Appended Map

DISPOSITION OF AIR BASES IN THE SOUTH EASTERN AREA

November 1942

DISPOSITION OF AIR BASES IN THE SOUTH EASTERN REGION

ABOUT NOVEMBER 1942



Base	Fighter	Carrier Bombers	Land Offensive	Total	Notes
LAE	7	8			Aside from this
RABAU	9	15	16	Approx.	some sea planes
KAVIENG	17		10	100	were located at
BUIW	8	10			bases in RABAU and SHORTLAND.

Dispatch of the army air force.

While still on the offensive the navy requested the army reconnaissance planes unit for the south-eastern area due to the insufficiency of naval reconnaissance planes which caused difficulty in the air operation.

In September the 76th Independent Air Squadron (hq. Reconnaissance planes) was placed under the command of the 17th army from the PHILIPPINES. This unit was transported to RABAU by naval auxiliary aircraft carrier at the beginning of October. This marked the first participation of army air force in the southeastern area operation.

The intensity of air battles in the same area became exceedingly pressing for the naval air force. Consequently it was determined that they would be reinforced with one part of the army's ^A top ranking army fighter unit, namely the 12th Air Brigade (the 1st Air Unit and the 2nd Air Unit) was placed under the command of the 8th Army Group together with its auxiliary unit.

The situation of the air bases.

Outline of the air bases located in the south-eastern area at that time is shown in a separate chart.

Chapter 2- Air Operation upto March 1943. New organization of the 6th Air Division.

The 8th Army Group was newly organized as the south-eastern area operation became important and o/a the end of November the 6th Air Division was organized under its command to take charge of the army air operation in the south-eastern area.

The organization of the above Division is shown in the following

table. Its hqs. arrived at RABAU from JAPAN in December.

Table of Organization of the 6th Air Division

	Air Div. Hq. Div. Commander: Lt. Gen. GIICHI ITABANA
	Chief of staff: Colonel TSUNEJI HAYABUCHI

Flight	The 76th Air Squadron
Units	The 12th Air Brigade (Air Brigade Hqs., the 1st Air Unit (A) and the 11th Air Unit (A)) The Air Instruction Brigade (Air Brigade Hqs., the 45th Air Unit (O) and the 208th Air Unit (O))

Sector	The 12th Air Brigade
Units	One part of the 48th Airfield Bn. The 21st Airfield Bn. The 47th Airfield Bn. The 209th Airfield Bn. The 33rd Airfield Co.

Signal and Intelligence	The 5th Air Signal Unit (minus one telephone Co. and one wireless signal Co.) The 4th Air Intelligence Unit Navigation Aid Co. of the 1st Air Intell. Unit One Co. of the 2nd Meteorological Unit
-------------------------------	--

Repair and supply	The 14th Air Repair Depot The 14th Air Supply Depot The 2nd, 3rd, 4th, 5th, and 6th Mobile Repair Squads. The 17th Ship Aircraft Depot
-------------------------	---

Others	The 5th, 6th, 10th, and 11th Airfield Construction Units. The 73rd and 81st Land Duty Companies.
--------	---

Advance of the I2th Air Brigade.

The I2th Air Brigade (the I1st Air Unit and the I1th Air Unit) which had been removed previously from the south-western area was transferred from ~~SHAN-TOO~~ ^{SURABAYA} by naval auxiliary aircraft carriers and reached TRUK on 10 December after spending approximately one week gathering equipments.

Duty of the 6th Air Division.

On the basis of the central agreement concerning the south-eastern area air operation the 8th Army Group ordered the 6th Air Division to destroy the enemy air strength, to protect convoys and to cooperate with the I6th Army in combat. Advance of the I1th Air Unit to BUNA.

During the last ten days of December the 6th Air Division advanced the I1th Air Fleet (15 planes) to the BUNA base. This unit shot down 6 enemy planes (4 fighters and 2 transport planes) and destroyed 3 large type planes on the ground. Two of our planes did not return to the base. This was the first combat in the south-eastern area in which the army air force participated.

Cooperation in Operation No. I8

Later, during the operation in which one part of the 51st Division was transported from ~~RABAU~~ ^{RABAU} to LAE on 3 January (Operation No. I8 consisted of 5 transports and 4 destroyers) the I2th Air Brigade protected the convoy from the air with its entire strength (approximately 50 undamaged planes) and almost completed its mission.

Cooperation in the retreating operation from GUADALCANAL.

The retreating operation from GUADALCANAL began from the last ten days of January. In this operation the 8th Army Group ordered the 6th Air Division (at that time the 45th Air Fleet (0) was included in addition to the I2th Air Brigade. The 45th Air Fleet was transported by auxiliary aircraft carrier from JAPAN to TRUK and then advanced by air from TRUK ~~to~~ to the SOLOMON Island area ~~to~~ to destroy the enemy air power as well as to escort the destroyers in cooperation with the naval airforce.

When the retreating operation from GUADALCANAL was completed the 8th Army Group changed its mission to "establishing a superior strategical situation" in Eastern NEW GUINEA (especially the formation of such strategical bases as LAE , SALAMUA , MADANG , WEWAK, etc.) . Due to an increase in the necessity for transportation manpower to the NEW GUINEA area a local agreement was concluded with the navy for this purpose in the middle of February. The local agreement of the transportation operation to the NEW GUINEA area.

Outline of the operation agreement in the territory concerned with the transportation operation to the NEW GUINEA area.

I. Air power:

- Army - 5sq. reconnaissance planes
60 fighters, 45 light bombers.
- Navy - 60 fighters, 20 land offensive planes
10 carrier bombers, 8 carrier offensive planes.
10 sea reconnaissance planes.

2. Allotment of duties:

(I) Air escort of convoys.

- a. LAE - approximately 60 army fighters.
LAE - approximately 40 navy fighters.
- b. MADANG The army will be mainly in charge. (Air power less the number lost in the LAE operation. The navy will cooperate if necessary.

(2) Battle for air supremacy.

Attack the enemy air bases at night (dawn) taking advantage of weather, moonlight and any other favorable condition according to the following divisions:

MORESBY	LABI	Navy
WAU	BUNA	Army

If conditions are favorable, both the army and navy will carry out daylight assaults in cooperation with each other.

(3) Attack against ships.

The navy will be in charge and the army will assist if requested.

(4) Direct cooperation in the land operations:

The army will be in charge.

3. Bases:

Mainly for army use- KOKOPO situated south of RABAU, MADANG,
TULUVU
and ~~TSURUBU~~

Mainly for navy use- the area east of RABAU, KAVIENG and
SURUMI

For army and navy use- the area west of RABAU, LAE and WENAK

4. Prior to the operation, manpower and material for the above bases will be transported as follows:

Approximately six and a half army infantry battalions

SURUMI: (guards) .

Naval Airfield Construction unit (Approximately 700
personnel).

They will be transported by navy transports and the convoy will
be protected by navy planes.

~~TULUVU:~~
~~TSURUBU:~~ One army amphibious truck will transport fuel and materials
under the protection of army planes.

MADANG:

a. Fuel and materials will be transported by one army amphibious
truck under the direct cover of army planes.

b. Approximately 150 personnel for the army base will be transported
by a destroyer escorted by navy planes.

Cooperation in Operation No. 81.

The transportation operation was carried out on the basis of
the above plan in which the main force of the 51st Division (the 18th
Army Hqs- 7,000 personnel-Operation No. 81) was transported to LAE starting
from RABAU on 1 March under the direct protection of approximately one
hundred army and navy planes. On the morning of 3 March Dampier Strait
was assaulted by 100-130 enemy fighters and bombers which almost
annihilated our convoy. In addition nearly half of the personnel were
lost. This operation was a failure except for the landing of one part
on LAE. Consequently marine transportation to LAE and SALAMUA area
starting from RABAU became useless and we were compelled to utilize the
route connecting PALAU and WENAK (or the area southeast of WENAK)
for transportation to the NEW GUINEA area. Even this new route required

Appended Chart

RESULTS OF IMPORTANT OPERATIONS OF THE 6TH AIR DIVISION

Dec. 42 - March 43

RESULTS OF IMPORTANT OPERATIONS OF THE 6th AIR DIVISION

FROM — DEC. 1942
TO — MARCH 1943

DATE	OPERATION	UNITS PARTICIPATING	RESULTS OF AIR COMBAT		OTHER RESULTS	DAMAGES	
			SHOT DOWN	DESTROYED ON GROUND		SUICIDE OR FAILED TO RETURN	DAMAGED
26/1	ATTACKED BUNA	11TH AIR FORCE (REG'T)	6	LARGE ^{TYPE} SIZE 3		FAILED TO RETURN 2	
5/1 10/1	LAE TRANSPORT PROTECTION	(A) 12TH AIR BRIGADE (A)	15 (13)		SUCCEEDED IN PROTECTING TRANSPORTS. 3½ SHIPLOAD OF MEN OUT OF 5 SHIPS SUCCEEDED IN LANDING. 1 SHIP SUNK DURING NIGHT ATTACK. 1 SHIP DAMAGED WHILE ANCHORED DURING DAYLIGHT BOMBING	LOST IN SUICIDE 3 FAILED TO RETURN 3	SET A FIRE — 4 SERIOUSLY DAMAGED — 6 PARTIALLY DAMAGED — 7
6/2	ATTACKED WAOU	12TH AIR BRIGADE (A) 45TH AIR FORCE (O) (REG'T)	FIGHTERS 10 (7) LARGE ^{TYPE} SIZE 2	FIGHTERS 4 LARGE ^{TYPE} SIZE 6		FAILED TO RETURN 4 SUICIDE LIGHT BOMBER 3	
27/1 8/2	GUADALCANAL ISLAND EVACUATING OPERATION	12TH AIR BRIGADE 45TH AIR FORCE (REG'T) 76TH INDEPENDENT AIR SQUADRON (—)	FIGHTERS 31 (2) CARRIER BOMBER 16 (3)	LARGE ^{TYPE} SIZE 15	COMPLETED PROTECTION OF 2ND & 3RD CRUISER TRANSPORT CONVOY. <small>DESTROYER</small>	SUICIDE FIGHTERS 4 LIGHT BOMBER 2 FAILED TO RETURN FIGHTER — 8 LIGHT BOMBER — 1	SERIOUSLY DAMAGED FIGHTERS — 1 LIGHT BOMBER — 5 HQ'S. RECONNAISSANCE PLANE — 1 PARTIALLY DAMAGED FIGHTERS — 3 LIGHT BOMBER — 1
1/3 3/3	2ND LAE TRANSPORT PROTECTION	12TH AIR BRIGADE	?	?	ANNIHILATION OF CONVOY WAS ANNULATED. MISSION WAS UNSUCCESSFUL.	?	?

close air protection. Consequently HANSA Bay situated half way between WEWAK and MADANG was temporarily appointed as the terminal for large ships going to the NEW GUINEA AREA. Later a new terminal was selected in the vicinity of WEWAK.

Establishment of air bases

In order to obtain a superior strategical situation in the Eastern NEW GUINEA AREA so that the air force could operate freely the 8th Army Group ordered the 18th Army to take charge of the establishment and reconstruction of airfields. Outline of the main operations of the 6th Air Division.

Chapter 3 - General situation on March 1943

The enemy air situation

Before the beginning of March the enemy air strength in the southeastern area had been increased to approximately 230 planes in GUADALCANAL and approximately 200 planes in Eastern NEW GUINEA. In view of the existing conditions it was believed that the enemy had total of 700 planes, 350 planes each on GUADALCANAL and NEW GUINEA by June. Moreover, the enemy had a large number of bombers consisting mainly of B-17's and B-24's.

Outline of our air force.

As compared to the enemy our air force consisted of approximately 100 army planes and 200 navy planes. The respective replacements from JAPAN were far below the number of losses. Moreover, restricted by poor preparation of bases, insufficiency of repairing and reconstruction facilities etc. our fighting strength was effective only ^{SPORADICALLY} ~~now and then~~.

Strongpoints of the enemy air force.

Taking advantage of the excellent facilities for establishing bases, enormous replacements and supplies, rapidity of going into action, superior equipment of the fighters, perfection of bullet-proof equipment for the fighters, increase in the flight radius of long range bombers, excellent radio detectors, etc., the enemy further strengthened their supremacy which they already controlled from the first. The disastrous

results of Operation No. 8I mentioned previously proved the strength of the enemy air force.

Recommendation of the 8th Army Group.

For fear that the "establishment of superior strategical bases in the NEW GUINEA area " would become a difficult task the 8th Army Group felt that the increase of air power, sea transportation (large and small ships) and facilities for debarkation (especially motor boats etc.) was in dispensable and recommended the following to the central headquarters at the end of March.

Outline of the recommendation for the establishment of strategic bases in Southern Pacific area (increase of ~~the~~ air strength).

I- Increase of military strength.

1. The military strength consisting of the 6th Air Division will be reorganized as follows:

One air fleet of headquarters reconnaissance planes.

(two squadrons)

Two fighter brigades

(one air brigade consists of two air ^{Reg'ts} fleets).

One bomber brigade

(one air ^{Reg't} fleet each of fighters, light bombers and heavy bombers)

2. As an auxiliary strength of the 6th Air Division the following units will be added.

Intelligence unit	one unit
Meteorological unit	one company
Signal unit	one each of radio and telephone Co.
Transportation unit	one unit
Airfield Construction Unit	Five units
Mobile repair section.	manpower of each unit will be increased by two times.

3. Air units will be attached to the 18th Arm .

4. Air section will be established in the 8th Army Group Hq.

5. Replacements and supplies for the above forces is urged to the maximum.

2- Unification and operation of air forces throughout the southern area.

All of the air forces deployed in the southern area will be unified and employed at the right time so that they will play an important part in the air operation of the same area. The system of commanding the air forces in the entire southern area will also be unified in accordance with the above.

3- Progress of establishments

Fortification of air fields will be urged. As a first step, bullet-proof shelters for air craft and materials for constructing epaulments will be forwarded.

4- Cooperation with the naval air force.

Although supply, transportation and protection for the New GUINEA area has been handled by the army according to the central agreement this will be revised so that both the army and the navy will be in charge.

5- Miscellaneous

1. Dispatch of the airfield construction training department.
2. Organization of manpower and equipment (especially two-seat fighters) for the promotion of air defense.
3. Dispatch of dummy airplane manufacturing engineers.

The army group will realize that the central headquarters is deeply concerned over the air strength which is growing weak throughout the entire area. In the above recommendation the minimum increase of military strength and the quick realization of other plans is requested in consideration of the present battle situation in this area which will be decisive for both JAPAN and the UNITED STATES. In anticipation of future developments.

Reply of central headquarters

In response to the above the central headquarters asserted to

RABAUL area and carry out military operations.

At the end of January (?) 1943 the 14th Air ^{REG'T} Fleet advanced from the BURMA area to RABAUL through JAVA, ^(DUTCH EAST INDIES AREA) ~~Northern AUSTRALIA~~ and NEW GUINEA. From the beginning of March, this ^{REG'T} fleet began to attack enemy bases situated in BUNA area.

Chapter 4- Air operations as of July 1943. Dispatch of additional air forces

In April the order concerning the diversion of the units for other purposes scheduled by the central headquarters on the basis of the recommendation of the 8th Army Group was issued. All units were transported along the route which passes by PHILIPPINES, ^{DUTCH EAST INDIES} ~~Northern AUSTRALIA~~ and NEW GUINEA except the 68th Air Combat Unit which was transported to TRUK by auxiliary aircraft carrier and then advanced by air. Lack of necessary facilities, poor navigation, poor equipment, etc., caused a great deal of loss in transportation. Consequently the actual fighting strength reaching the destination was insufficient.

The 68th Air ^{REG'T} Fleet also miscalculated its navigation on the way to RABAUL from TRUK, resulting in the loss to the combat strength of the main force.

The BENABENA Operation

We knew that the enemy was constructing a big air base in the vicinity of BENA BENA In NEW GUINEA from the beginning of May. For fear that the above base would have a devastating effect on our bases in Eastern NEW GUINEA the 8th Army Group consulted the central headquarters to draw up plans for the destruction of this enemy base. In June the 7th Air Division which had been in the ^{DUTCH EAST INDIES} ~~Northern Australia~~ area and one raider unit which was sent from JAPAN were put under the command of ^{THE 8TH ARMY GROUP. THE ARMY GROUP DREW} up plans to have the BENA BENA Base captured by the raider unit under the protection of the reinforced air force and simultaneously to have the 18th Army secure the same district.

Outline of the main operation of the 6th Air Division.

The main operation of the 6th Air Division was to protect HANSA and WENAK bound convoys during navigation and disembarkation.

A greater part of this unit was used for this passive operation so that when it came to actual combat the Division was capable only in making surprise attacks with small units on the enemy key bases.

An example is shown in the appended table.

Outline of the result of the air operation in May.

(Chart shown in the next page) .

RESULTS OF MAY AIR OPERATION

Offensive operations				Other operations				
	No. of Sorties	Total No. of Planes	Results	Losses	Objective	Direct Protection of convoy	Air Defense of strategic sector	Result
Fighter Planes	10	208	Shot down 7	2 planes failed to return	HARUHAGEN WILHELM BENABENA KAINANTES BUNA & BUL LDCG AIR-FIELDS. operated in front of SALAMAU on enemy ships north of BUNA.	Total 698 Planes	Total 147 Planes	Shot down 5 planes. Lost 1 in Suicide mission. 2 failed to return. 5 damaged
Heavy Bomber	4	47						
LIGHT BOMBERS AND HEADQUARTER RECONNAISSANCE PLANES	Total 26	Total 548	2 destroyed on ground	1 damaged	TO WITH GROUND OPERATIONS	Assault		
Reconnaissance Planes		56						

Actual combat strength of the 6th Air Division

Because of the shortage of replenishments to cope with plane losses, poorness of airfields, lack of maintenance and repair facilities, insufficient power of airplanes, poor quality of pilots, malaria, etc (described in previous article) and the unexpected poor performance of the new type #3 fighter plane, the actual combat strength of the 6th Air Division was low. An example of this situation is as follows:

12A

Outline of the Combat Strength of the 6th Air Division.

Classification	End of May					End of June					Combat Strength Available as of 26 July
	Airplane			Pilots		Airplane			Pilots		
Unit Section	A	B	C	OFF.	NCO and WO	A	B	C	OFF.	N.C.O. WO.S	
76th Air Co. (A)	8	4	3	5	12	15	0		9	12	6
An element of the 81st Air Regiment (A)	8	0		6	4						
1st Air Regt. (A)	38	5	1	17	29	27	17		17	29	17
11th Air Regt. (A)	24	10	1	18	24						
13th Air Regt. (A)	10	1		16	29	31	1	2	16	39	17
24th Air Regt. (A)	24	4	12	13	19	7	2	12	12	18	7
68th Air Regt. (A)	18	7	1	15	26	20	6		15	27	23
78th Air Regt. (A)											
45th Air Regt. (O)	15	4	1	16	31	11	3	1	19	29	13
208th Air Regt. (O)	28	1	5	15	27	15	6	8	14	19	
14th Air Regt. (O)	34	3	1	31	31	30	8		23	20	11
83rd Air Co. (A)	10	1	1	4	11	9	1	2	4	11	5

Note: 1- Airplanes are classified into A, B and C as follows: A- usable in operation; B- usable after short period of repair; C- Requires lengthy repairs.

1218

Landing on RENDOVA

The enemy landed on RENDOVA in the SOLOMON Archipelago area on 30 June. The naval airforce began to attack and by the order of the 8th Army Group, one part of the 6th Air Division (consisting mainly of the I4th Air Unit (.)) joined in the attack. However, neither of them could repulse the enemy. Following the landing the enemy advanced to the vicinity of Munda and constructed a base of operations for the army, navy and the air force to prepare for the SOLOMON operation.

Chapter 5 Air Operations up to December 1943.

Reorganization of the 4th Air Army.

Since the air operation in the south eastern area, especially in the NEW GUINEA area, became severe the 4th Air Army was reestablished under the command of the 8th Army Group to unify the military strength of the 7th Air Division (formerly used as a reserve) and the 6th Air Division. At the end of July the ~~battle~~^{OF BATTLE} order was issued as follows:

On 6 August the above mentioned headquarters advanced to RABAU.

Distribution	6th Air Division	7th Air Division	Units Under the direct control of the Army
Flight Units	Air Instruction Brigade (Air Brigade H.Q.) (45th Air Fleet ^{REG'T} (○)) (208th " " (○)) (10th " " (○)) (13th " " (○)) (24th " " (△)) (14th " " (○)) (83rd " Squadron (—))	3rd Air Brigade (Air Brigade H.Q.) (70th Air Sq. (○)) (59th Air Fl. (△)) (75th Air Fl. (○)) 9th Air Brigade (Air Brig. H.Q.) (7th Air Fleet ^{REG'T}) (61st " " (○)) 5th Air Fleet ^{REG'T} 74th Air Sq. (○)	14th Air Brigade (Air Brigade H.Q.) (68th Air Fleet ^{REG'T} (△)) (78th " " (△)) 81st Air Sq. (○) 72nd Air Fleet ^{REG'T} 20th Air Sq. (○) One Raider Unit Air Photography Unit
Sector Units	Air Instruction Brigade 48th, 51st, 47th, 209th & 25th Airfield Bns. 22nd, 23rd, 26th, 24th & 25th Airfield Co. 5th, 6th, 10th & 11th Airfield Construction Units	4th Air Brigade 9th " " 41st, 35th, 20th, 28th & 38th Airfield Bn. 29th & 7th Airfield Co. 4th & 9th Airfield Construction Unit	12th Air Brigade 21st & 22nd Airfield Battalions 23rd Airfield Co.
Signal & Intelligence Units			1st Air Fleet ^{REG'T} One each of Radio & Telephone Co. of 2nd Air Signal Unit 5th Air Signal Unit 4th Air Intell. Unit 6th Meteorological Unit 12th Field " Unit
Repair & Supply Units	2nd, 3rd, 4th, 5th, 6th, 7th, 8th & 9th Mobile Repair Squads (Multiplex telegraph)		14th Aircraft Repair Depot 209th Branch Depot 14th Air Supply Depot 17th Ship Aircraft Depot
Others	73rd & 81st Ground Co. 9th Transportation Unit	Repair Squads (3) 298th Automobile Co. 69th & 123rd Ground Co. 43rd Construction Co.	

Duty of the 4th Air Army.

The 8th Army Group ordered the 4th Air Army to destroy the enemy air force in eastern NEW GUINEA, protect the marine transportation and cooperate with the 18th Army in combat.

Operational plan of the 4th Air Army.

The plan of operation scheduled by the 4th Air Army on 10 August is as follows:

I- Purpose of the operation.

To increase the military strength as soon as possible and strengthen our operational force in Eastern NEW GUINEA.

Simultaneous with the annihilation battle of the enemy air force we will protect the route of the marine transportation of the Army Group and destroy the enemy which is advancing by land and sea.

To cooperate with the southern army in its defensive duty in the BANDA sea area.

II- Outline of the operation.

1. To cooperate secretly with the naval air force and endeavor to destroy the enemy air power in the EASTERN NEW GUINEA area.

2. To secure the route of marine transportation in the Eastern NEW GUINEA area. Close relationship between the 8th Army Group and the navy is required for this.

3. To actively and systematically attack the enemy air bases located in the BENA BENA, ~~HAREN~~ ^{WAW} and ~~WAWA~~ areas, key points in the BENA BENA area and the enemy convoys, ships etc. along the coast of Eastern NEW GUINEA for the purpose of repulsing the enemy advances.

4. To cooperate directly with the 18th Army.

5. To observe the enemy air navigation and action on the coast of Eastern NEW GUINEA.

6. When required one part of the force will be in charge of ^{the} air defense of RABAU, WEWAK and any other place.

7. In any emergency the proper unit will carry out air transportation.

8. When the occasion demands one part of the force will be used in

the SOLOMON area.

9. From the first ten days of September the TENGO (Heaven) Operation-raiding and capturing of BENA BENA- will be carried out.

10- The force consisting of one squadron of headquarters reconnaissance planes, one fighter unit, one ^{REGT} fleet of light bombers and one squadron of heavy bombers will cooperate with the southern Army in its defense operation in the BANDA sea area.

III- Allotment of the Groups

Reference: Order of the operation.

IV- Outline of the duties of the main groups. Operation of the first period (till the end of August).

Purpose:

The army will replenish and consolidate its battle strength as soon as possible to prepare for the operation of the first period. The operation will be carried out by the groups whose duties are outlined as follows:

The 6th Air Division

1. Cooperate directly with the 18th Army in combat.
2. Protect convoys.
3. Destroy the enemy convoys and ships on the coast of Eastern NEW GUINEA.
4. Cut off the rear line of communication of the enemy in WAU and BULLDOG .
5. Repulse any advance of the enemy air force directed toward Eastern NEW GUINEA .
6. Cooperate with the Southern Army in defending the BANDA sea area.

Operation of the 2nd period.

1. Carry the TENGO (Heaven) operation into ^{EFFECT} practice.
2. Endeavor to destroy the enemy air force.
3. Other general actions will be carried out in accordance with the duties of the first period. It is important to carry out the air operation in order to secure air superiority.

IV. Outline of the order of the 4th Air Army at 2400, 11 August in RABAU.

- I. Order of battle for the 4th Air Army (omitted).
2. Distribution of units in the 4th Air Army is shown in the appended sheet.

Three mobile aircraft repair sections separated from the Southern Army will come under the command of the 7th Air Division at the time of their departure from ports in the south-eastern area while the 209th Branch Depot will be placed under the command of the 14th Field Aircraft Repair Depot upon its arrival in NEW GUINEA.

The transfer of the 59th Air Fleet to the scheduled positions will be detailed separately.

3. The army will reple e and consolidate its combat strength for operations in the Eastern NEW GUINEA area. While ~~of~~ destroying the enemy air power the army will protect the route of marine transportation of the army group and annihilate the enemy advancing from the land or sea. In addition one part of the force will cooperate with the Southern Army in defending the BENDA sea area.

4. The 6th Air Division will carry out the following duties after deploying its main force in the Eastern NEW GUINEA area east of HANSA and one unit each on WEWAK, LORUNGAU and RABAU.

- (1) To cooperate directly with the 18th Army.
- (2) To protect convoys.
- (3) To destroy the enemy convoys on the coast of Eastern NEW GUINEA, especially the ships in the HUON Sea and the ~~DAMPIER~~ DAMPIER Strait area.
- (4) To cut off the enemy rear line of communication in WAU and the BULLDOG area.
- (5) To repulse the advance of the enemy air force advancing toward Eastern NEW GUINEA.
- (6) To take charge of the following details:
 - a. Air sector duty and emergency repair work for the air units of the 7th Air Division or directly ~~for~~ the army.
 - b. Air route service in the RABAU area and air sector duty for the air units directly commanded by the army.

c. Air sector duty in the ^{BUT} ~~HOCT~~ area and HOLLANDIA until the arrival of land duty units of the 7th Air Division.

d. Preparation for deployment of the TENGO (Heaven) Force in the WEWAK area.

e. Construction of air safety facilities in ALEXIS and ^{TULOVO} ~~TSURUBU~~ (TN-?)

f. Establishment of fixed communication system to TOKYO, SINGAPORE and MANILA from RABAU (base.) .

g. Survey necessary to prepare maps of Eastern NEW GUINEA with air photographs.

h. Construction of airfields in the Eastern NEW GUINEA area east of WEWAK and the area south and north of RABAU. Conducting and assisting the construction of airfields in ^{TULOVO} ~~TSURUBU~~ and LORENGAU. The duty of constructing of an airfield in WEWAK district, however, will be taken from the 18th Army on 20 August.

5- The 7th Air Division will carry out the following duties after deploying on the area west of WEWAK (including WEWAK).

1. To destroy the enemy air bases in the BENA BENA and HAGEN areas.
2. To destroy the enemy convoys and ships on the coast of Eastern NEW GUINEA.

3. To protect convoys.

4. To attack the enemy ground force in the front area of the LAE and SALAMUA districts and annihilate the enemy's rear line of communications in the WAI and BULLDOG area.

5. To destroy the enemy airforce advancing to Eastern NEW GUINEA.

6. To construct airfields in the Eastern NEW GUINEA area west of ^{BOI} ~~BOCT~~??, especially the construction of new airfields in the vicinity of AITAPE and BOIKIN. To cooperate in constructing airfields within the area operated by the Southern Army.

7. The 3rd Air Brigade (minus the 59th air ^{REG'T} ~~Fleet~~), the 5th Air ^{REG'T} ~~Fleet~~, one squadron of heavy bombers and the ground units concerned will cooperate with the southern Army in the operation in BANDA sea. The order for operation of the above units will be issued by the commander-

in-chief of the Southern Army. 1

8. One part (consisting mainly of three planes) of the 101st Air Transport company will be stationed at Southern RABAUL airfield and will be under the direct command of the army. The remaining company will cooperate with the 1st Air Route Department in transporting aircraft for the 8th Army Group.

6- To deploy the main force on Central WEWAK airfield and one part on Eastern RABAUL air field. The 10th Air ~~Fleet~~ ^{REG'T} will ~~observe facilities~~ ^{RECONNOITER THE ENEMY AIR FORCE, CONDITION} ^{OF REAR FACILITIES,} movement of vessels etc. especially in the eastern and southern parts of NEW GUINEA.

7- When required the details for carrying out the above duties (4-6) will be issued separately.

8- The areas (boundaries) to be respectively reconnoitered by the two air divisions and the 10th Air Fleet are as follows:

The area west of east longitude 141° ; south of south longitude and east of the line connecting PORT MORESBY, BUNA, GASMATA and RABAUL.

1. Between the 6th and 7th Air Division.

The route of River LANU and east longitude 146° (except the area reconnoitered by the 10th Air ~~Fleet~~ ^{REG'T}).

2. On the basis of their missions both air divisions will carry out reconnaissance beyond their assigned areas.

9- The commander of the 6th (the 7th) Air division will issue all instructions covering guard, billeting and supply for the units attached to the other air division and the units attached directly to the air army located in the area east of a line connecting WEWAK to MANUS Island (including the route itself) (The area west of the route is not included-). The commander of the 6th Air Brigade will order the units dispatched to ~~BIRIA~~ ^{TULUVU} to receive any instructions ^{IN RESPECT TO GUARD AND BILLETING FROM THE} commander of the 65th Brigade while the units in Rabaul ^{WERE ORDERED} to receive all instructions for defense (except defense by airplanes) from the commander of the 30th Division.

Personnel dispatched to PALAU and units in readiness for landing will be placed under the command of the highest ranking commander in

PALAU.

I0- The 1st Raider Unit will station the raider air combat unit in MANILA, the raider regiment in PALAU, then prepare for the coming operation.

II- The 7th Air Transport Unit will advance to WEWAK as soon as possible.

I2- The 1st Air Rout Department will carry out their mission along the air routes. They will supply airplanes with deployment and desposition remaining unchanged. Air transportation of supply aircraft to NEW GUINEA especially urged. Furthermore the air route joining MANILA, HAL AHERA Western NEW GUINEA and WEWAK will be strengthened.

I3- The 6th Air Signal Regiment will establish communications immediately after the completion of redeployment and disposition.

I4- The 4th Air Intelligence Unit will strengthen the intelligence network in Eastern NEW GUINEA and cooperate with the 6th and 7th Air Division in combat.

I5- The 6th Navigation Aid Unit will increase its military strength in Eastern NEW GUINEA. Aside from this, one part will be deployed on LORUNGAU. This unit will cooperate with the 6th and 7th Division.

I6- While reviewing the meteorological facilities in the Eastern NEW GUINEA Area the I2th Field Meteorological Unit will deploy one part each in LORUNGAU and GAROBI. The unit will cooperate with the 6th and 7th Air Division. Furthermore the unit will complete the weather forecast system and hasten the correct judgment of general weather by cooperating closely with the 1st Air Route Department, the 18th Army, the 17th Army and the naval meteorological section.

I7- The details essential to deployment of each unit will be separately issued.

I8- The I4th Field Aircraft Repair Depot will carry out the job of supplying air ornanace (except airplane, ammunition and fuel) and the maintainance with out changing the present disposition for a time. In regard to repair and servicing the main force will cooperate with the 6th Air Division while the remaining force will cooperate with the 7th Air Division. This depot will instruct the commander of the I7th Ship Air craft Depot as to repair duties.

19- The I7th Ship Aircraft Depot will be stationed at the present location and carry out repairing of engines. The depot will receive instructions as to maintenance from the commander of the I4th Field Aircraft Repair Depot.

20- The I4th Field Air Supply Depot will be stationed at its present position for the time being and will handle the supply of ammunition and fuel.

21- The Air Photograph Unit will arrange and transport air photographs as well as take photographs for preparing maps for military use. The details will be separately issued.

22- The I2th Independent Engineer Regt. (minus the 3rd and 4th Co.) will cooperate with the 4th Air Intelligence Unit which is scheduled to deploy on WEWAK.

23- The commander of the 4th Air Army will advance to WEWAK at the end of August.

Appended Sheet.

Division of units of the 4th Air Army.

The 6th Air Division

Missing units:

The I0th Air ^{REGT} Fleet

The 5th Field Airfield construction Unit

The 73rd Ground Company.

Attached units:

The 81st Independent Air Squadron

The 59th Air ^{REGT} Fleet.

The 20th Independent Air Squadron

The I2th Air Sector Headquarters

The 21st Air field Bn.

The 22nd Airfield Bn.

The 33rd Airfield Bn.

The 41st Airfield Bn.

The 8th Independent Engineer Regt.

The 81st Construction Company (minus one platoon)

The 26th Construction Company (specially established minus one platoon)

The 7th Air Division

Missing units:

The 59th Air ^{REGT} Fleet

The 41st Airfield Bn.

Attached units:

The 14th Air Brigade.

The 101st Air Transportation Squadron

The 5th Field Airfield Construction Unit

Units commanded directly by the army.

The 10th Air ^{REGT} Fleet

The 1st Raider Unit

The 7th Air Transportation Unit

1st Air Route Department

The 5th Air Signal Regiment

Attached units:

One each of radio and telephone Co's of the 2nd Air Signal Regiment.

The 4th Air Intelligence Unit

The 6th Air Unit

The 12th Field Meteorological Unit

The 14th Field Air Repair Depot.

Attached Units:

The 209th Branch Depot of the HAKUYOSHI (PAICHENGTSU) Army Flying School Depot.

One half of the 73rd Ground Company.

The 1st Ground Company (especially established minus one half)

The 17th Ship Air Depot

The 14th Field Air Supply Depot

Attached units:

The 73rd Ground Co. (minus one half)

One half of the 1st Ground Co. (specially established)

The 1st Air Photograph Unit of the KWANTUNG Army.

The 12th Independent Engineer Regt.

(minus the 3rd and 4th Co.)

Notes:

Hereafter the following units will be called as indicated
in ()

The Air Instruction Brigade (hq.) of the PAICHENGTSU Army Flying
School.

(The Air Instruction Brigade (Hq.))

The Air Sector Instruction Hq. of the PAICHENGTSU Army Flying School.

(The Air Sector Instruction Hq.)

The 209th Branch Depot of the PAICHENGTSU Army Flying School Depot

(The 209th Branch Depot)

The 1st Air Photograph Unit of the KWANTUNG Army.

(The Air Photograph Unit)

One mobile air repair squad of the 6th Air Division

(The 1st Mobile Air Repair Section) (heavy bombers)

The mobile air repair squads of the 7th Air Division

(The 10th Mobile Air Repair Section) (fighters)

(The 11th Mobile Air Repair Section) (heavy bomber)

The 12th Mobile Air Repair Section) (heavy bombers)

Enemy air raids against WEWAK and ^{BUT}BOOTS.

While the ground operations of the 4th Air Army were under
preparation, WEWAK and ^{BUT}BOOT were raided by a large scale enemy force
which made a surprise attack from the night of 16 to the morning of
17 August. 60-70 of our planes were destroyed while approximately 40
planes escaped damage.

While replenishing the military strength the remaining force
protected the convoys in the WEWAK sector and made several attacks on
enemy air bases located in the valleys of LAMU, MARKHAM and in the sectors
of BENA BENA --HAGEN in an effort to weaken the enemy force. Except
for a few setbacks the real combat strength of the 4th Army was approx-
imately 100 planes.

Although it was called an Air ^{Regt} ~~1st~~ the effective strength of
each unit was equal to or less than a squadron

An example of the military strength of the 4th Air Army.

Number of Combat fitted planes as of 10 September.

	The 13th Air ^{REGT} Fleet (^)	9	
	The 24th Air ^{REGT} Fleet (^)	16	
The	The 59th Air ^{REGT} Fleet (^)	14	
6th Air	The 45th Air ^{REGT} Fleet (o)	5	63 planes
Division	14th Air ^{REGT} Fleet (o)	13	
	The 81st Air Squadron (-)	2	
	The 83rd Air Squadron (-)	4	
<hr/>			
	The 74th Air Squadron (-)	3	
	The 68th Air ^{REGT} Fleet (^)	10	
The	The 78th Air ^{REGT} Fleet (^)	6	34 planes
7th Air	The 7th Air ^{REGT} Fleet (o)	4	
Division	The 61st Air ^{REGT} Fleet (o)	11	
<hr/>			
TOTAL	97 planes		

Suspension of the BENA BENA Operation

The operational plan of destroying the enemy air bases in the vicinity of BENA BENA was postponed one month due to preparatory conditions in the middle of August. As a result of careful deliberation it was decided that this operation would be unsuccessful because of the difference in the air force and the rough terrain would hinder the advance of the land force. Even if success is attained in the first operation the seizure of the area ^{WOULD} be a difficult task. Consequently the operation was suspended and the 1st Raider Unit (the air unit received its training in the PHILIPPINES while the parachute troops received ^{THEIR} its training in PALAU) was ordered to divert in the south-western area.

Enemy air raid on WEWAK.

6

Appended Map

SOUTHERN ISLAND AREA AIRFIELD DISPOSITION

End of September 1943

Appended Chart

AIR BASES IN THE SOUTHEAST AREA

(Letter Part of Sept 43)

AIR BASES IN THE SOUTH EAST AREA
(STATUS AS OF SEPT. 1945)

AREA	NAME	PRESENT CONDITION	CLASSIFICATION BY STAGE OF FINISHING - PROGRESS			CONTROLLING UNIT
			FOR ARMY USE	FOR NAVY USE	ARMY & NAVY USE	
SOLJANVILLE AREA	BUN	NEAR COMPLETION		o		NAVY
	TUROVLU	UNDER CONSTRUCTION		o		
	BUKA	NEAR COMPLETION		o		
		UNDER CONSTRUCTION		o		
NEW BRITAIN AREA	RANML	NEAR COMPLETION		o		NAVY
					o	
					o	
					o	
			o		ARMY	
			o			
	KABUBU	NEWLY CONSTRUCTED		o		NAVY
				o		
	SURUM	NEAR COMPLETION		o		NAVY
	LORENOM	NEAR COMPLETION	o			ARMY
NEWLY CONSTRUCTED			o		NAVY	
TULUVU	NEAR COMPLETION	o			ARMY	
NEW IRELAND	KAVENS	NEAR COMPLETION		o		NAVY
		NEAR COMPLETION		o		NAVY
		NEWLY CONSTRUCTED		o		NAVY
	SANO	NEAR COMPLETION		o	o	NAVY
		NEWLY CONSTRUCTED		o		NAVY
SABER AREA	MADANG	NEAR COMPLETION	o			ARMY
	ALEXIS	NEAR COMPLETION	o			
			o			
			o			
			o			
			o			
			o			
	WETAK		o			
	SUT		o			
			o			
ASOPE	NEWLY CONSTRUCTED	o				
HOLLANDIA	NEAR COMPLETION			o	NAVY	
	UNDER CONSTRUCTION	o			ARMY	
WANE	NEAR COMPLETION	o			NAVY	
SABUN		o			ARMY	
	NEWLY CONSTRUCTED	o			ARMY	

Handwritten mark resembling a signature or initials.

On 15 September WEWAK was again raided by the enemy air force resulting in the loss of 30-40 of our planes. Therefore the replenishment of the combat strength of the 4th Air Army became almost hopeless.

Outline of the air bases.

Outline of the air bases in the south eastern area at around the end of September is shown in the appended sketch.

Plan for destroying the enemy air power.

As the enemy air force began to deplete our air force stationed in WEWAK, ^{BUT} BOOF etc. the 4th Air Army found it necessary to attack the enemy bases with all of our combined strength with the idea that if the enemy were left alone our air force would become useless and powerless.

On 2 November the following plans were prepared:

I- Objective

I. Beginning from early November the army will attack the valleys around River MARKHAM and River LAMU in close cooperation with the naval airforce and destroy the enemy air power. In addition the army will cooperate with the 18th Army in combat.

Whenever the enemy develops new landing operation the army will repulse it with all or its force.

II- Outline of instructions.

2. The first period (scheduled to be 3 days from 6 November)

1. All forces of the fighter units will be mobilized to form the main offensive power to destroy the enemy air force located within the valleys of River ^{MARKHAM} MAKAMU (CTN?) and River LAMU. All fighter units will be placed under the command of the 6th Air Division during this operation.

2. When the 18th Army and the 17th Division in the area require aid one part of the air army will cooperate with them.

3. The 2nd period

To follow the first period and to exploit the battle successes.

Details as to the main targets and the disposition of assault duties will be drawn up separately after referring to the progress of the battle in the first stage.

4. Throughout both periods the army will advance one part of the heavy bomber unit toward the BUNA and PORT MORESBY areas at night for the purpose of destroying the enemy air force in that areas.

5. Cooperation with the naval air force will be separately decided.

6. The change of command in accordance with the new distribution of troops will be at 2400, 3 November.

7. Both divisions will assemble their military strength and undergo training until the beginning of the new operation.

8. For the protection of the HOLLANDIA convoy on 6 November one part each of the 78th Air ^{REGT}Fleet and the 13th Air ^{REGT}Fleet will be mobilized.

III- Disposition of troops

9. See appended sheet No. 1.

IV- Disposition of deployment.

10. See appended sheet No. 2.

Appended sheet No. 1.

Distribution of troops

The 6th Air Division:

Lt. Gen. GIICHI ITABANA, Division commander

The 6th Air Division Hqs.

The Air Instruction Brigade

The 13th Air ^{REGT}Fleet

The 248th Air ^{REGT}Fleet

The 14th Air ^{REGT}Fleet

The 81st Independent Air Squadron

The 83rd Independent Air Squadron

The 20th Independent Air Squadron

The Air sector units and other units remain unchanged.

The 7th Air Division

Lt. Gen. EINOSUKE SUDO, Division commander

The 7th Air division Hq.

The 3rd Air Brigade

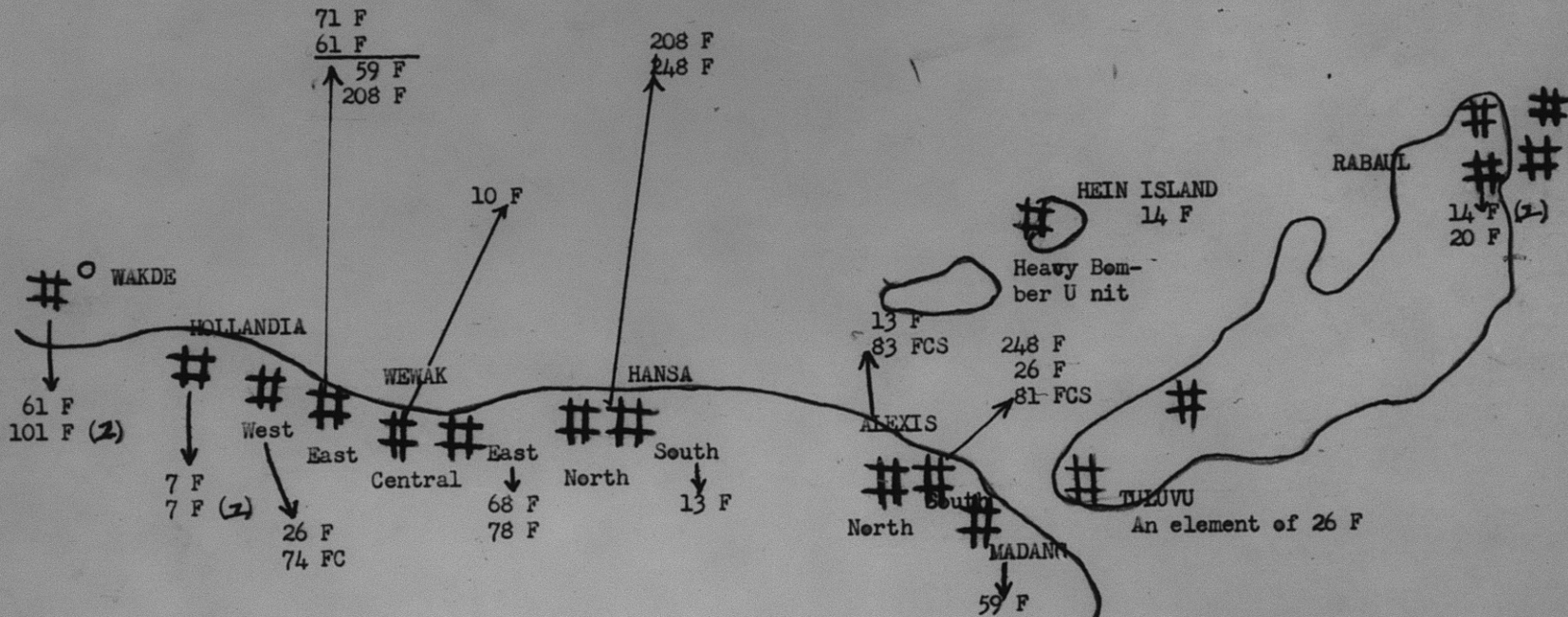
The 9th Air Brigade

The 59th Air ^{REGT}Fleet

The 74th Independent Air Squadron

25

DISPOSITION OF THE 4th AIR FORCE



LEGEND

- # - Airfield
- F - Air Regiment
- FC - Air Company
- FCS - Independent Air Co.
- F(2) - (TN-?) AIR TRANSPORT

The 101st Air Transport Squadron

The air sector units and other units remain unchanged.

The units commanded directly by the Army.

The 14th Air Brigade

The 10th Air ^{REGT} Fleet

The 7th Air Transport Unit

Other units remain unchanged

On 8 November following the operation of the first stage, the 4th Air Army prepared the following plan of operation for the second stage.

Plan of operation for the 2nd stage.

I- Purpose

1. To exploit the success of the operation in the 1st stage the army will destroy the enemy air power located in the valleys of River MARKHAM and River LAMU and in the vicinity of FINSCH and cooperate closely with the 18th Army in combat.

One part of the Army will carry out night attacks against the enemy air force in PORT MORESBY, BUNA and the places mentioned in the above paragraph.

2. In addition to being on the lookout for any new enemy landings on the area west of FARZEL in NEW BRITAIN Island and on the northern coast area of the FINSTEL Mountain regions, the army will repulse any attempts of landing with all its force.

II- Outline of instruction

3. All the air units except the 10th Air ^{REGT} Fleet will be under the sole command of the 6th Air Division.

4. In the operation of the second stage, the fighter units will be unified ^{AND} consistent bombing of the enemy in the air and on the ground will be the rule. ^{WILL} Especially carry on surprise attacks intermittently and repeatedly with picked small assault units.

5. Taking into consideration the results of the 1st stage, we will carry out thorough assault training for fighter units and endeavor

especially to improve communication facilities.

6. We will repeat persistent attacks with picked planes against the enemy in the sectors of PORT MORESBY AND BUNA.

7. Directions for the direct cooperation with the 18th Army will be prepared and executed by the commander of the 6th Air Division when the battle situation requires.

8. As a rule the directives as described in paragraph 7 will be prepared by the commander of the 6th Air Division. The army may lead in battle whenever possible.

9. In addition to being on the lookout for the movements of the enemy in the sectors of PORT MORESBY, BUNA and KIRIWINA, the 10th Air ^{REGT} Fleet will take careful precautions against any new enemy landings.

10. The operation of the second stage is scheduled to begin on 12 November and it will last for approximately two weeks.

The operation of the 4th Air Army in destroying the enemy air force was carried out as planned and the operation of the naval air force was fairly successful at times. However, the general situation of the enemy air force in the south-eastern area was much improved at the end of November due to the great difference in the military strength.

The enemy air situation at the end of November in the south-eastern area.

General condition of the enemy air force

I. Military strength

Eastern NEW GUINEA Area:

PORT MORESBY approx.	420	
BUNA	" 200	Approximate
MURUA	" 100	Total
GOODENOUGH	" 100	900
LABI	" 50	
Other districts	" 100	

Notes:

Large type (four engines)	150
Medium type (two Engines)	400 (P-38 100)
Small type (single engines)	350

SOLOMON Areas:

GUADALCANAL Island	Approx.	300	
RUSSELL		300	Approximate
NEW GEORGIA		400	Total
VELLA LAVELLA		400	700

Notes:

Large type	100
Medium type	250
Small type	350

Apart from the above, mobile units are operating in the SOLOMON Archipelago area.

2. Records of the actions of the enemy planes. (During the month).

SOLOMON Archipelago Area	ERWENTA ERWENTA	I,800-I,900
Total no. of planes mobilized-approx. 4000.	SHORTLAND BUKA	I,000

BISMARCK Archipelago Area	RABAU	600-700
Total no. of planes mobilized-approx. 2,000	GNSMATA TULUVU TSURUBU	I,200-I,300
	Other districts	100

3. Establishment of bases.
NEW GUINEA Area:

Southern district of LANGEMAK Bay

The base (2600 meters X 150) is under construction

SOLOMON Archipelago Area:

MONO island

The base (1300 X 120) is complete

TAROKINA

The first base (1600 X 200 - is almost complete)

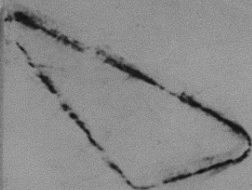
The second base (800 X 160 is under construction)

4. Success of the air battles during November (All the army and navy air forces and the land force).

The total number of planes shot down:

AIR OPERATION RECORDS
(Hist of Southern Area)

Vol. 6



Imperial General Headquarters' plan for the disposition of Southern Area Air Units
(7 March)

Area	End of April	End of 1942	1st Part of 1943
Philippine Island	22nd Air Brigade Hdq. 10th Indep. Air Bn. Hdq 52nd Air Co. 74th Air Co. 16th Air Regt.	22nd. Air Brigade Hdq. 10th Indep. Air Bn Hdq. 74th Air Co. 76th Air Co. (X) Air Co (newly formed) 16th Air Regt.	22nd Air Brigade Hdq. 10th Indep. Air Unit 74th Air Co. 76th Air Co. 16th Air Regt (X) Air Regt (newly formed)
	Part 50th Air Unit 62nd Air Regt.		
French Indo- China	21st Indep. Air Bn Hdq 84th Air Co. 82nd Air Co.	21st Indep Air Bn Hdq 84th Air Co. 82nd Air Co. (X) Air Co. (newly formed)	
Thailand	5th Air Division Hdq. 4th Air Brigade		4th Air Brigade
Burma	47th Air Co. 50th Air Regt 8th Air Regt		50th Air Unit 8th Air Unit (X) Air Regt (newly formed)
Malaya	14th Air Regt 78th Air Brigade 64th Air Regt. 12th Air Regt 98th Air Regt 1 Co 81st Air Regt.		(X) Air Co. (newly formed) 83rd Indep. Air Unit 71st Air Co 89th Air Co 73rd Air Unit
	10th Air Brig. 77th Air Regt 27th Air Regt 31st Air Regt 70th Air Co 83rd Indep. Air Unit 71st Air Co 89th Air Co.		47th Air Regt.
Java	3rd Air Brigade 59th Air Regiment 75th Air Regiment 1 Co. 81st Air Regt. 73rd Air Co.	3rd Air Brigade 59th Air Regiment 75th Air Regiment 81st Air Regiment	3rd Air Brigade 59th Air Regiment 75th Air Regiment 81st Air Regiment
Sumatra			
Units that can be used for other operations	3 Air Div. HQ 15th Indep. Air Unit 50th Air Co. 51st Air Co. 60th & 90th Air Regt <i>12th Air BRIGADE 13th AIR REGT 11th AIR REGT</i>	5th Air Div. HQ 52nd Air Co. 62nd Air Regt. 10th Air Brigade 77, 27, 31 Air Regt	7th Air Brigade 70th Air Co. 64th Air Regt. 12th Air Regt 98th Air Regt

21st Air Div
 4th Air Brigade
 59th Air Regiment
 75th Air Regiment
 81st Air Regiment
 83rd Air Unit
 73rd Air Unit
 newly formed

Malaya
Under command of
3rd Air Div Hq

1st Balloon Bn Hq
1st Balloon Co.
2nd Balloon Co.
Directly attached to Southern
Army
Southern Air Tech. Dept
20th Field Air Supply Depot
16th Field Air Repair Depot
Command of 3rd Air Div Hq
160th Trunk Unit
Command of 16th Field Air
Depot
184th Trunk Unit

15th Airfield Co.
(Attached directly
to Southern Army)

3rd Air Div Hq
90th Air Regt
15th Airfield Bn Hq
15th " " "
21st " " "
22nd " " "
27th " " "
92nd " " "
93rd " " (less 1 Co)
91st " " "
1 Co. 17th Airfield Bn.
" " 23rd " "
" " 94th " "
15th Air Comm. Unit, less part
5th, 6th & 7th Field
Airfield Const. Unit
Part 15th Field Air Depot
32nd BA Unit
80th Trunk Unit
1st Trunk Unit
68th & 69th Ground
Detail Unit
48th Guard Unit
12th Air Transp. Unit
Command 16th Field Air
Depot

Java-Sumatra
(Units under the
command of 3rd
Air Div Hq)

10th Shipping Air Depot
4th Balloon Co.
Under command of 16th Army Hq
73rd Air Co.
1 Co. 84th Airfield Bn
167th Trunk Unit

3 Air Brig. Hq
59th Air Regt
75th Air Regt
61st Air Regt (-1 Co)
1 Co. 11th Air Regt
33rd Airfield Co.
7th Airfield Co.
41st Airfield Bn
35th " "
82nd " " (-1)
25th Air Comm. Unit
Part 16th Air Instal.
Unit
Part 15th Air Depot
4th Airfield Bn Hq
24th Airfield Bn
28th Airfield Bn
Part 1st Air Com-
munication Unit
9th Field Airfield
Const. Unit
Part 9th Field Air
Repair Unit
299th Special Truck
Unit
123rd Ground Detail
Unit

DISPOSITION OF THE SOUTHERN ARMY'S AIR FORCE

(1st August)

Theater of Battle	Distribution of troops	Units under the direct control of the Southern Army	Units under the Command of 3rd Army Air Force				Units under the command of the Army Air Force
			Directly attached	3rd Air Brigade	12th Air Brigade	5th Air Division	
FRENCH INDO CHINA	Directly attached to the ARMY AIR FORCE	1st Air Transport Unit	1st Field Air Replacement Unit part of 1st Air Route Regt.			Brigade headquarters 1st Airfield Bn. part of 12th Airfield Company.	9th Ground Detail Unit of 8th Division
		2nd Air Transport Unit	1st and 2nd Bns. of 19th Field Air Supply Depot 25 Field Meteor. Unit (less an element)			21st Special Truck Unit. 81st Guard Unit	
	21st Indep. Air Unit	21st Indep. Air Bn. HQ 84th Air Co. 82nd Air Co. 86th Airfield Company 85th Airfield Company					
HAWAIIAN DIVISION	Directly attached to the ARMY AIR FORCE		Part of 1st Air Route Regiment. 3rd Bn. HQ of 19th Field Air Repair Depot. 1st & 2nd Bns. of 20th Field Air Supply Depot 1 part of 25th Field Meteorological Unit.			12th Airfield Unit (portion missing)	
			83th Indep. Air Bn. HQ. 71st Air Co. 89th Air Co. 91st Air Co. 84th Airfield Battalion (less 1 company) 11th Air Transport Co. 44th Airfield Company 1st of 3rd A.I. Unit.			5th Air-Division HQ 4th Air Brig. HQ. 8th Air Regt. 64th Air Regt. 81st Air Regt. 7th Airfield Brigade HQ. 82nd Airfield Bn. 15th Airfield Bn. 2 Co. of 91st Airfield Bn.	17th Shipping Air Depot 18th Shipping Air Depot (Now in JAPAN Proper)
BURMA	5th AIR DIVISION		5th Radio Platoon			1st Air Signal Unit (less a portion) 16th Air Intell. Unit (less a portion) 17th Air Intell. Unit. 4th Airfield Constructure Unit 8th Airf. Const. Un. 20th A.A. Unit 33rd A.A. Unit 26th A.A. Unit 280th Spe. Truck Un. 66th Truck Unit 67th Gr. Detail Unit 80th Gr. Detail Unit	140 Truck Unit 275th Special Unit. 35th Special Truck Bn. (less 1 unit)
			8th Radio Platoon 46th Fixed Radio Platoon	1st Truck Unit 43rd Guard Unit			
INDIA	Directly attached to the ARMY AIR FORCE	South Air Technical Department.	1st Air Route Regt. (main force)			50th Air Regt. 15th Airfield Brig. HQ. 27th Airfield Bn. 5th Airfield Const. Un. 7th Airfield Const. Un. 69th Gr. Detail Unit 48th Guard Unit part of 1st Air Signal Unit. 7th Airfield Company	184th Truck Unit
		13th Special Air Transport Unit 15th Special Air Transport Unit	7th Air Transport Unit 12th Air Transport Co. part of 1st Field Air replacement unit 1st Bn. HQ. of Field Air Repair Depot 20th Field Air Supply Depot Bn. HQ. 1st Field Meteorological Bn. HQ. 1st Airfield Bn.	1st Truck Unit 43rd Guard Unit			15th Air Signal Unit (less a portion)

46th Fixed Radio
Platoon

Constructure Unit
8th Air. Const. Un.
20th A.A. Unit
33rd A.A. Unit
36th A.A. Unit
280th Spe. Truck Un.
86th Truck Unit
67th Gr. Detail Unit
80th Gr. Detail Unit

Directly attached to
the Army Air Force

South Air Technical
Department.
Transport Unit
15th Special Air
Transport Unit

1st Air Route Regt.
(main force)
7th Air Transport
12th Air Transport Co.
part of 1st Field Air
replacement unit
1st Bn. Hq. of Field
Air Repair Depot
20th Field Air Supply
Depot Bn. Hq.
1st Field Meteorological
Bn. Hq.
1st Airfield Bn.

1st Trunk Unit
43rd Guard Unit

50th Air Regt.
15th Airfield Brig. Hq.
27th Airfield Bn.
5th Airfield Const. Un.
7th Airfield Const. Un.
69th Gr. Detail Unit
48th Guard Unit
part of 1st Air Signal
Unit.
7th Airfield Company

184th Truck
Unit
15th Air
Signal Unit
(less a
portion)

MALAY

14th Air Regt.
7th Air Brigade Hq.
12th Air Regiment
98th Air Regiment
94th Airfield Battalion
(less 2 companies)
17 Airfield Battalion
23 Airfield Battalion
92 Airfield Battalion

Directly attached to the
Army Air Force

25th Air Signal Unit
2nd Bn. of 16th Field
Air Repair Depot.
4th Bn. of 20th Field
Air Supply Depot.
2nd Airfield Bn.

JAVA

3rd Air Brigade

3rd Air Brigade Hq.
59th Air Regiment
75th Air Regiment
70th Air Co.
4th Airfield Brigade Hq
24th Airfield Battalion
41st Airfield Battalion
35th Airfield Battalion
28th Airfield Battalion
29th Airfield Company
9th Airfield Construc-
tion Unit
296th Special Truck
Unit.
123rd Ground Detail
Unit.

One Company of 60th
Airfield Battalion.

167th Truck Unit

Directly attached
to the Army Air
Force

3rd Bn. of 16th Field
Air Repair Depot
Agency of 20th Field
Air Supply Unit.

12th Airfield Brig. Hq.
21st Airfield Bn.
22nd Airfield Bn.
33rd Airfield Company
6th Airfield
Construction Unit.
68th Ground Detail Unit

part of 15th Air
Signal Unit.

SEMPORA

12th Air Brigade

18th A.A. Artillery
Brigade Hq.
16th A.A. Unit
23rd A.A. Unit
(less a portion)
34th A.A. Unit
40th A.A. Unit

12th Air Brigade Hq.
1st Air Regiment
11th Air Regiment

Part of 1st Air
Signal Unit.
Part of 16th Air
Intelligence Unit

160th Truck Unit

Units under the direct control of the
Southern Army

Sumatra

Java

13th Special Air Transport Bn Hdq. 1st & 2nd Co.	3rd Air Brigade Hdq.	4th Airfield Brigade Hdq.
12th Air Transport Co.	59th Air Regiment	24th Airfield Bn.
1st Raiding Group	75th Air Regiment	28th Airfield Bn.
16th Field Air Dept.	27th Air Regiment	Part - 1st Air Signal Unit
25th Air Sub-depot	73rd Air Co.	9th Airfield Construction Unit
19th Air Repair Unit	81st Air Regt. (1)	Part - 9th Airfield Construction Unit
20th Air Supply Unit	7th Air Transp. Unit. 1st & 2nd Co.	4th Balloon Unit
1st Air Route Regt.	3rd Ind Air Brig. Hdq.	23rd Special Truck Unit
25th Field Balloon Unit	59th Air Regt	123rd General Detail Unit
Air Technical Unit	75th Air Regt	1 Co. - 24th Airfield Bn.
1st Field Air Replacement Unit	1st Co. 81st Air Regt	41st Airfield Bn.
	73rd Air Co.	35th Airfield Bn.
		1/2 32nd Airfield Bn.
		1st Truck Unit
		20th Air Signal Unit
		16th Shipping Air Depot
		93rd Airfield Bn.
		33rd Airfield Co.
		7th Airfield Co.

13th Special Air Transport Bn Hdq.
1st and 2nd Co.

3 Ind. Air Brig Hdq

4th Airfield Brig Hdq

15th Special Air Transp. Bn Hdq.
1st & 2nd Co.

59th Air Regiment

41st Airfield Bn

French - H&C

Philippine

1st Airfield Brig H&C	(x) Indep Air Brig H&C
25th Airfield Co	(x) Air Co. (Both newly formed, above included)
26th Airfield Co	52nd Air Co
27th Airfield Co	16th Air Regt
6th Airfield Co	(x) Air Co (newly formed)
28th Airfield Co	11th Airfield Brig H&C
281st Spec Truck Unit	32nd Airfield Co
61st Ground Detail Unit	13th Airfield Co
21st Indep Air En H&C	18th Airfield En
84th Air Co	297th Spec Truck Unit
32nd Air Co	111th Ground Detail Unit
(x) Air Co (2) (newly established)	56th Guard Unit
	1st Mobile Repair Unit
	2nd Balloon En H&C
	3rd Balloon Co

Estimated strength and disposition

10th Indep Air En H&C
 76th Air Co
 74th Air Co
 48th Airfield En
 40th AA Unit

Strength that can be used for other operations

Times:

Situation during the

Outline Chart of the organization of the
 the disposition of Air Forces in Southern and
 Army Air
 and the
 other ar
 latter in

Approved

21st Indep Air En H&C	(x) Air Brig H&C
32nd Air Co	(x) Air Co

Estimated
 Army Air
 and the
 other ar
 latter in

13th Special Air Transport Bn Hdq.
1st and 2nd Co.

15th Special Air Transp. Bn Hdq.
1st & 2nd Co.

11th Air Transp. Co.

12th Air Transp. Co.

16th Field Air Depot

19th Field Air Repair Unit

20th Field Air Supply Unit

25th Air Sub-depot

1st Raiding Group

25th Field Balloon Unit

Air Technical Dept

1st Field Airfield Construction Unit

17th Shipping Air Depot

18th Shipping Air Depot

3 Ind. Air Bn Hdq

59th Air Regiment

75th Air Regt.

1st Co. 31st Air Regt

81st Air Regt.

73rd Air Co.

4th Airfield Bn Hdq

41st Airfield Bn

35th Airfield Bn.

82nd Airfield Bn

1 Co. 84th Airfield Bn.

38rd Airfield Co.

7th Airfield Company

25th Air Signal Unit

9th Airfield Construction
Unit

298th Special Truck Unit

1st Truck Unit

123 Ground Detail Unit

Part - 9th Field air
Repair Unit

4th Balloon Co.

81st Air Regt (-1)	48th Guard Unit	3rd Air Div Hdq	Air Army Hdq (newly formed)
X Air Regt (newly formed (-))	36th Truck Unit	4th Air Brig Hdq	7th Airfield Brig
Part 12th Field Air Repair Depot	28th Truck Unit	50th Air Regt	1 Co 94th Airfield Bn
83rd Air Bn	160th Truck Unit	6th Air Regt	15th Airfield Bn
89th Air Co	68th Ground Detail Unit	14th Air Regt.	9th Airfield Co
Part 15th Field Air Repair Depot	69th Ground Detail Unit	71st Air Co	29th Airfield Co
1st Balloon Bn Hdq	7th Field Airfield Construction Unit		16th Air Intell Unit
1st Balloon Co	2nd Balloon Co		1st Indep Air Intell Unit
15th Airfield Brig Hdq	20th AA unit		18th Air Communication Unit (portion missing)
82nd Airfield Bn (-1/2)	5th Airfield Co		36th AA Unit
92nd Airfield Bn	96th Airfield Bn		32nd AA Unit
84th Airfield Bn (-2/3)	17th Air Intell Unit		43rd Guard Unit
15th Air Signal Unit (portion missing)	10th		4th Field Airfield Construction Unit
6th Field Airfield Construction Unit			5th Field Airfield Construction Unit
			3-5th Spec Truck Bn
			275th Truck Unit
			80th Ground Detail Unit
			67th Ground Detail Unit
			190th Truck Unit

21st Indep Air Bn Hdq	(x) Air Brig Hdq
22nd Air Co	(x) Air Co
34th Air Co	52nd Air Co
(x) Air Co (Newly formed)	(x) Air Co
55th Airfield Co.	16th Air Regt
58th Airfield Co	11th Airfield Bn Hdq
1st Airfield Brig Hdq	32nd Airfield Co
3rd Airfield Co	13th Airfield Co
6th Airfield Co.	18th Airfield Bn
12th Airfield Co	297th Spec Truck Unit
281st Spec Truck Unit	111th Ground Detail Unit
81st Ground Detail Unit	56th Guard Unit
	7th Mobile Repair Unit
	2nd Balloon Bn Hdq
	3rd Balloon Co

Page 1

Army Air Forces according to the progress of operations.
and the air operations of the holding operation, the disposition
other areas will be completed.
Latter part of March

Estimated strength and disposition at the end of the Burma Campaign

Remarks:

1. Units within squares will be sent to other operational areas after the Burma operation is completed.

2. In the event it is impossible to form the (x) new units as specified the equivalent strength will be substituted in its place.

3. If necessary increase the number of headquarters reconnaissance planes of the newly established units and organize the headquarters reconnaissance planes after the completion of the BURMA operation with the (x) newly established fighter unit in MALAY and the 41st Air Company as the basis.

COURSE OF AIR OPERATIONS FOLLOWING ENEMY LANDING IN SOUTHEAST AREAS.

Date of landing		Area	Landing strength	Number of enemy planes during operation/area	Early stage	Middle stage	Latter stage	Number of our ^{use P} sortie planes on the day of enemy landings.	Movements of important operational movements.	
S E P T E M	4th	Early stage	Vicinity of BULU River mouth in western HUPOI	NEWAK	212	226	102	62 planes fighter 31	On the 1st, 2nd & 3rd of Sept. escorted the 7th NEWAK transport convoy. On the 2nd they were attacked by a large force of enemy fighters and bombers. Losses: 5 planes destroyed or seriously damaged. Because of an erroneous dispatch on the morning of the 30th, re-pulse of the landing (morning of the 4th) was unsuccessful.	
				BUT.						
				ERA SALAMAUA FINSCH	37	121	600	bomber 10 heavy light		
B E R	22nd	about 0400	Between FINSCH and CAPE STATION	NEWAK	102	146	258	79 planes fighter 39 bomber 24 light heavy	On the 19th, the main force of the heavy bomber unit attacked MORSEBY. On the 20th, the main force attacked MAZABU (T.N.) Airfield while one group carried out interception operations in the NEWAK area.. on the 21st, the entire force attacked FAABUBY (T.N.?) On the 22nd, ^{due to losses only} 3 reconnaissance planes could carry out attacks on the landing units in the FINSCH vicinity...	
				BUT ALEXIS	92	87	34			
D E C E M B E R	15th	0130	Cape MARGUS	TULUVU	59	191	762	84 planes fighters 45	On the 12th, fighters and bombers attacked MASAWARA airfield. Concerning enemy landings on MARCUS, only 5 bombers and 35 fighter planes were able to attack FINSCH due to inclement weather on the afternoon of the 15th. On the 16th, 7 bombers and 40 fighters attacked MARCUS Point. All of the heavy bombers failed to return. Only fighters attacked on the 18th.	
				MARCUS	663	603	459	bombers heavy 7 light 12		
				ALEXIS MADANG						
R	26th	0525	TULUVU	Convoy consisting of 15 large transport, 40 medium transport and 20 small transport, 2-3 Bns. landed.	TULUVU	191	762	782	71 planes fighters 36 bombers heavy 7 light 12	Although the enemy transport movement on the afternoon of the 25th was known, due to insufficient fighting strength the attack could not be carried out. On the early morn of 26th, 30 light bombers and fighter planes and 5 heavy bombers (temporarily leaving the convoy protection mission) attacked enemy ships near MARCUS Point following our naval attack. All heavy bombers failed to return, thereby eliminating our heavy bomber strength.
				NATAMO	603	459	952			
				ALEXIS MADANG RABAUL	72	156	308			
				2 to 3 Bn.						

280

J A N. 2nd 0600	Cape GUMBI	Landing made with 5 cruisers, 16 destroyers, 30 small transports and 40 large landing barges.	WEWAK ALEXIS MADANG	18 459	189 952	82 735	72 planes fighters 39 Bomber heavy 7 light 17	Because our main force was patrolling the MADANG area since early monn it was forced to land for refueling. By the time it ^{could} attack, the main body of the enemy convoy had unloaded and had departed. However, one transport was set afire and 3 small boats were sunk. Night attacks were continuously carried out and supplies were dropped to the troops.
--------------------------	------------	---	---------------------------	-----------	------------	-----------	---	--

24

282

830 planes (400 planes were shot down in the SOLOMON Archipelago area) .

In aerial combats:

560 planes (200 planes were shot down in our offensive assaults)

270 planes were shot down by anti-aircraft guns.

Our losses:

184 planes (some were completely destroyed while the rest were heavily damaged).

5. Noteworthy matters

1. In November the strength on NEW GUINEA
2. Air raids were carried out against RABAUl by carrier planes.
3. The enemy air force in the SOLOMON area took part in the Central Pacific area operation.
4. Due to the improvements of the efficiency of the enemy fighters, the enemy began to make surprise attacks on our bases with small units of powerful fighters.

Diversion of the 7th Air Division to the other areas.

By the order issued at the end of October the main force of the 7th Air Division and some other units were diverted to Northern AUSTRALIA N Area (commanded by the 2nd Army Group) from the second ten days of November to the end of the month. On 15 December the enemy disembarked on Cape MERKUS and on the 26 the enemy also disembarked on
TULUVU
TSURUBU(TN-?)

Table of the outline of the main operation carried out by the 4th Air Army.

Outline of the transition of the air operation carried out by the 4th Air Army from September to the end of December 1943 against the enemy disembarkation is shown in the appended table.

Chapter 6- Air operation until April 1944-

Operations in MERKUS and ^{TULUVU}TSURUBU

The army and the navy air forces attacked the enemy landing in the Cape MERKUS and ^{TULUVU}TSURUBU sector as mentioned below but with little

success. Approximately 90 navy planes and 60 army planes remained undamaged.

Later the assaulting operation was regrettably abandoned and the navy carried out the air defense of RABAUl exclusively while the army carried out the air defense of WEWAK.

Navy

From 15 to 27 December - attacked seven times total no. of planes mobilized:

514 planes- Fighters 407
Carrier bombers 107 planes.

Army

From 15 to 26 December - attacked four times. Total 16. of planes mobilized:

132 planes Fighters 120
Heavy bombers 12 planes

The air and sea supremacy in the south-eastern area was complete by the enemy except small districts in RABAUl and WEWAK. Consequently the enemy was disembarking convoys in TAROKINA, MERKUS, ^{TULUVU}TSURUBU etc. openly during daylight hours.

Recommendation for the additional dispatch of the air force to the 8th Army Group.

If the present condition does not improve in a short time the situation in south-eastern area will become irrevocable. In consideration of this predicament the navy in the area concerned made a representation to the central headquarters. The headquarters affirmed that the airforce would be reinforced up to 300 planes of various types in the beginning of February in addition to the present force.

On the other hand the 8th Army Group made a representation for the rapid restoration of military strength of the 4th Air Army at the beginning of January. Its outline is as follows:

I. Additional dispatch of two picked fighters squadron.

Rapid restoration of military strength of the fighter units (especially the 59th Air Unit and the 248th Air Unit.)

2. Additional dispatch of one picked heavy bomber ^{REGT}fleet. The rapid restoration of two heavy bomber ^{REGT}fleets.

30

3. Replenishment of military strength of headquarters reconnaissance planes.

Matters related to the recommendation of the above.

In compliance with the above request the central headquarters placed the 8th Air Brigade (consisting of the Air Brigade Hqs., The 33rd Air Unit (A) and the 60th Air Unit (O)) and the 77th Air Unit (V) under the command of the 2nd Army Group from south-western area at the end of January to cooperate with the 8th Army Group in preparing against enemy landings.

The above schedule was prepared to relieve the static air force located in the theatre of operation of the 8th Army Group.

The ground operation of the 8th Army Group is as follows:

It is difficult to predict whether the enemy in the Eastern NEW GUINEA area will direct its main offensive force directly upon the MADANG sector or to WEWAK or MADANG after capturing the Admiralty Archipelago is precedently capture not only the strategical situation in MADANG district will be against us but the enemy will have no difficulty in making rapid advances on the WEWAK area. Due to the possibility of losing MADANG, an important keypoint before the battle commences the ADMIRALTY Island operation will be included in the MADANG area operation in preparation for emergency.

Territorial agreement concerning the MADANG area operation concluded between the 2nd Army Group and the 8th Army Group.

The 8th Army Group receive the consent of the central headquarters for the above operation. Anticipating that the enemy would strike during the dark nights in the latter half of February and at the latest during the dark nights in March the 8th Army Group made the following arrangements with the 2nd Army Group at the end of February.

I. Purpose

To cooperate in the MADANG area operation especially in the battles that will be fought in the MADANG area before and after the enemy landings.

2. The military force to be dispatched

The 8th Air Brigade Hqs.

The 33rd Air ^{REGT} Fleet

The 77th Air ^{REGT} Fleet

The 60th Air ^{REGT} Fleet

The 45th Air ^{REGT} Fleet

The 75th Air ^{REGT} Fleet

3. Duration of dispatch and charge of command.

The duration of dispatch is scheduled to be one month before and one month after the enemy landing which is expected in the MADANG area. The dispatched units will be instructed by the commander of the 8th Army Group during the operation. Because of the pressing circumstance in the MADANG area, the dispatched units will advance immediately toward the following concentration points after consolidating in the Northern AUSTRALIAN area and receive instructions from the commander of the 8th Army Group.

The units received the above instruction at the time that the 8th Air Brigade Hqs. reached HOLLANDIA.

The 8th Air Brigade Hqs.

The 33rd Air ^{REGT} Fleet

The 77th Air ^{REGT} Fleet

The 45th Air ^{REGT} Fleet - WAKDE

The 75th Air ^{REGT} Fleet

One part - HOLLANDIA

main force - AMAHAI (TN-?)

The 60th Air ^{REGT} Fleet

one part - WAKDE

main force - GARELA

Order of the 4th Air Army

The 4th Air Army prepared plans for the MADANG ^{AREA} ~~see~~ operation (in case the enemy lands on ADMIRALTY Islands it will be the same as this) which is expected very shortly and on 12 February the order as follows was issued in preparation for this operation.

Outline of the order of the 4th Air Army.

I. The following units commanded by the 2nd Army Group will be in-

structed by the commander of the 4th Air Army during their period of cooperation with the 8th Army Group in the MADANG Area Operation. The points are as follows:

When the commander of the 8th Air Brigade arrives at the assembly points the command will be transferred.

Units	Concentration Points
The 8th Air Brigade Hqs.	The 2nd point of HOLLANDIA
The 33rd Air ^{REGT} Fleet	The 3rd point of Hollandia
The 77th Air ^{REGT} Fleet	The 3rd points of HOLLANDIA
60th Air ^{REGT} Fleet	The GARELA
75th Air ^{REGT} Fleet	The 2nd point of HOLLANDIA AND WAKDE
The 45th Air ^{REGT} Fleet	WAKDE

2. The army will cooperate in the operation of the 18th Army while checking the enemy air and sea actions. Furthermore the army will protect our marine transportation directed toward NEW GUINEA and complete the disposition set up against new enemy landings.

3. Distribution of troops is shown in appended table no. 1.

4. The commander of the 6th Air Division will order the air sector units to deploy rapidly according to appended table no. 2 and will order the flight units to rapidly complete the preparation of counter-attacks according to appended table no. 3 and to complete the preparation of attacks according to appended table no. 4.

In addition the commander will carry on the following duties:

1. Destroy the enemy air force in Eastern NEW GUINEA.

2. Be on the lookout in the Eastern NEW GUINEA Coast west of DAMPIER Strait.

3. Cooperate directly in the operation of the 18th Army.

4. Protect our convoys (details will be published whenever necessary.)

5. The commander of the 8th Air Brigade will rapidly complete the preparation of counter-attacks according to appended table no. 3 and complete the preparation of attacks as shown in appended table no. 4.

6. The 61st Air ^{REGT}Fleet will be on the lookout every night with one part in the Eastern NEW GUINEA coast west of BUNA. They will organize the ^{REGT}fleet so that the entire force can be concentrated at WAKDE and the ^{BUT}district east of BOOT if the occasion demands.

7. The 10th Air ^{REGT}Fleet will observe the situation of the enemy vessels and planes located in Eastern NEW GUINEA area every day especially the districts of FINSCH and BUNA.

Appended table no. I.

Distribution of troops of the 4th Air Army.

The 6th Air Division

The Missing units:

The 10th Air ^{REGT}Fleet

The main force of the 48th Airfield Bn.

One part of the 47th Airfield Bn.

The 25th Airfield Compan.

The 6th Mobile Air Repair Section

The 5th Field Airfield Construction Unit

The 73rd Ground Company

The attached units:

The 3rd Squadron of the 28th Air ^{REGT}Fleet (hereafter it will be called the 3rd Air Squadron)

The 14th Air Brigade

Commander of the Air Brigade- Colonel TOKUNAGA

The 14th Air ^urigade Headquarters

The 68th Air ^{REGT}Fleet

The 78th Air ^{REGT}Fleet

The 9th Air Brigade

Commander of the Air Brigade Lt. Col. TSUBOUCHI

The 9th Air Brigade Hqs.

The 75th Air ^{REGT}Fleet

The 45th Air ^{REGT}Fleet

The 20th Independent Air Squadron

The 64th Field Anti-aircraft Bn.

The 66th Field Anti-aircraft Bn.

The 68th Field Anti-aircraft Bn.

The 39th Independent Field Anti-aircraft Co.

The 42nd Independent Field Anti-aircraft Co.

35th Field POM-POM Co.

The 39th Field Pom-POM Co.

38th Field POM-POM Co.

The 3rd Independent Field Searchlight Co.

"4th " " " "

"7th " " " "

"18th Airfield Bn.

" Main force of the 20th Airfield Bn.

The 10th Mobile Air Repair Squad

The 61st Construction Co. (minus one platoon)

The 26th Specially Established Construction Co.

(minus two (2) platoons)

The 18th specially Established Sea Duty Co:

Units commande directly by the Air Army.

The 8th Air Brigade Hqf.

The 33rd Air ^{REGT} Fleet

The 77th Air ^{REGT} Fleet

The 60th Air ^{REGT} Fleet

The 10th air ^{REGT} Fleet

The 61st Air ^{REGT} Fleet

The 7th Air transportation Unit

The 12th Field Air Defense Unit

Commander- Colonel OKADA

The 12th Field Air Defense Unit Hq.

The 61st Field Anti-aircraft Bn.

The 62nd Field Anti-aircraft Bn

The 36th Field POM-POM Co.

The 37th Field POM-POM Co.

The 1st Independent Field Searchlight Co.

" 2nd " " " "

" 40th " " " "

Main force of the 48th Airfield Bn.

One part of the 47th Airfield Bn.

The 25th Airfield Bn.

One part of the 20th Airfield Bn.

The 1st Air Route Dept.

The 5th Air Signal Regiment.

Attached Units:

One each of radio and telephone company of the 2nd Air Signal Regiment.

The 4th Air Intelligence Regt.

The 6th Navigation Unit.

The 12th Field Meteorological Unit.

The 14th Field Air Repair Section.

Attached Units:

The 209th Branch Depot.

The 6th Mobile Air Repair Section.

One half of the 73rd Ground Co.

The 1st Specially Established Ground Co. (minus one half),

The 17th Ship Air Depot.

The 14th Field Air Depot (Supply).

Attached Units:

The 73rd Ground Co. (minus one half).

One half of the 1st Specially Established Ground Co.

The 4th Field Airdrome Construction Unit.

" 5th " " " "

" 13th " " " "

" 36th Independent Engineer Regt.

" 86th Ground Co.

" 31st Construction Co.

" 52nd " " "

One platoon of the 26th Specially Established Construction Co.

The Army Epidemic Prevention & Water Supply Depot.

The Army Anti-Malaria Unit.

Situation of the Enemy Airforce:

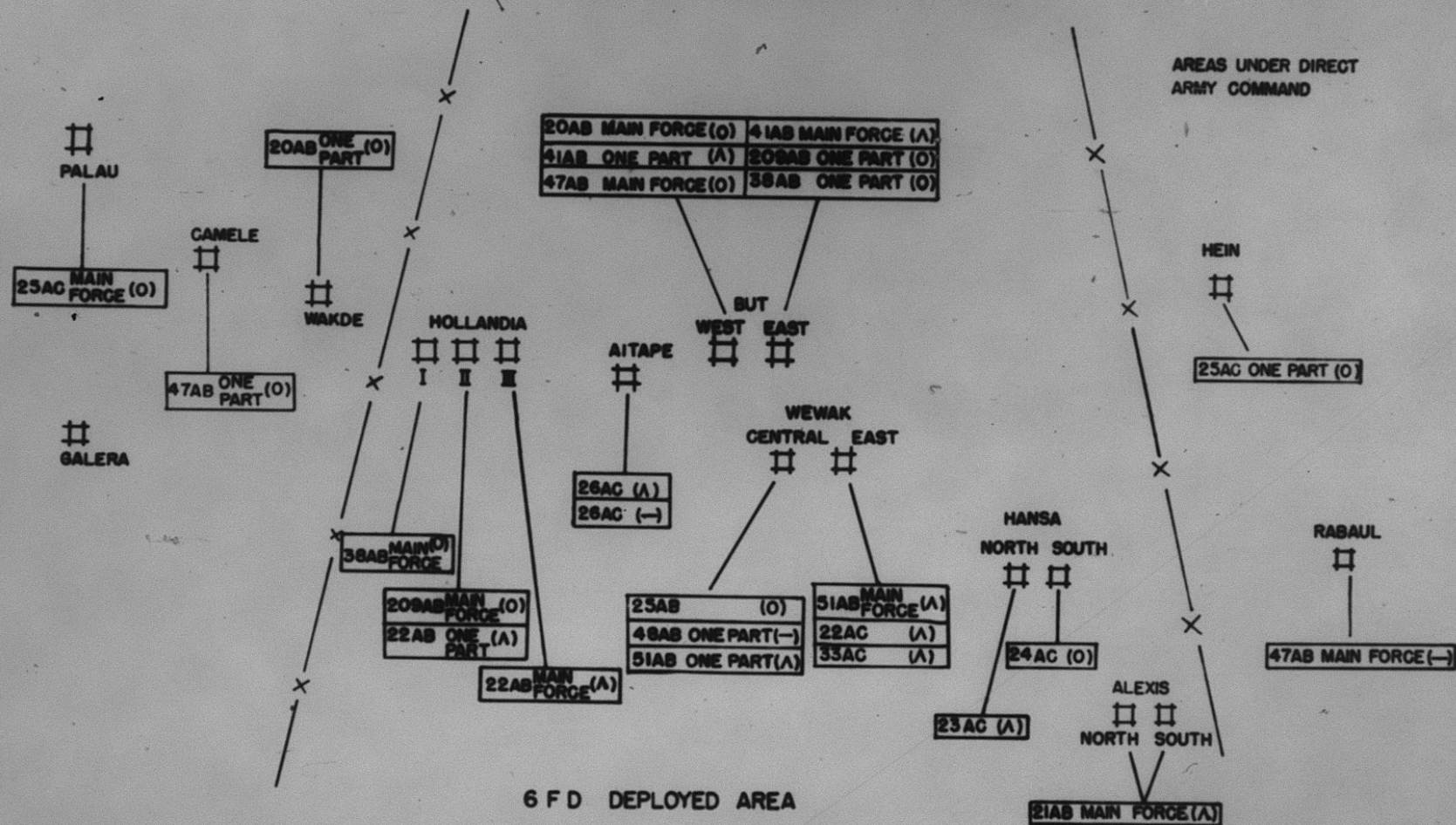
The general situation of the enemy airforce in the SOUTHEASTERN areas during the first and second ten days of February was believed to be as follows:

Separate Sheet No. 2

DEPLOYMENT AND DISPOSITION OF AIR SECTOR UNITS

260

DEPLOYMENT & DISPOSITION OF AIR SECTOR UNITS



AB (A) AIR FIELD BATTALION
 AC (C) AIR FIELD COMPANY
 FD AIR DIVISION

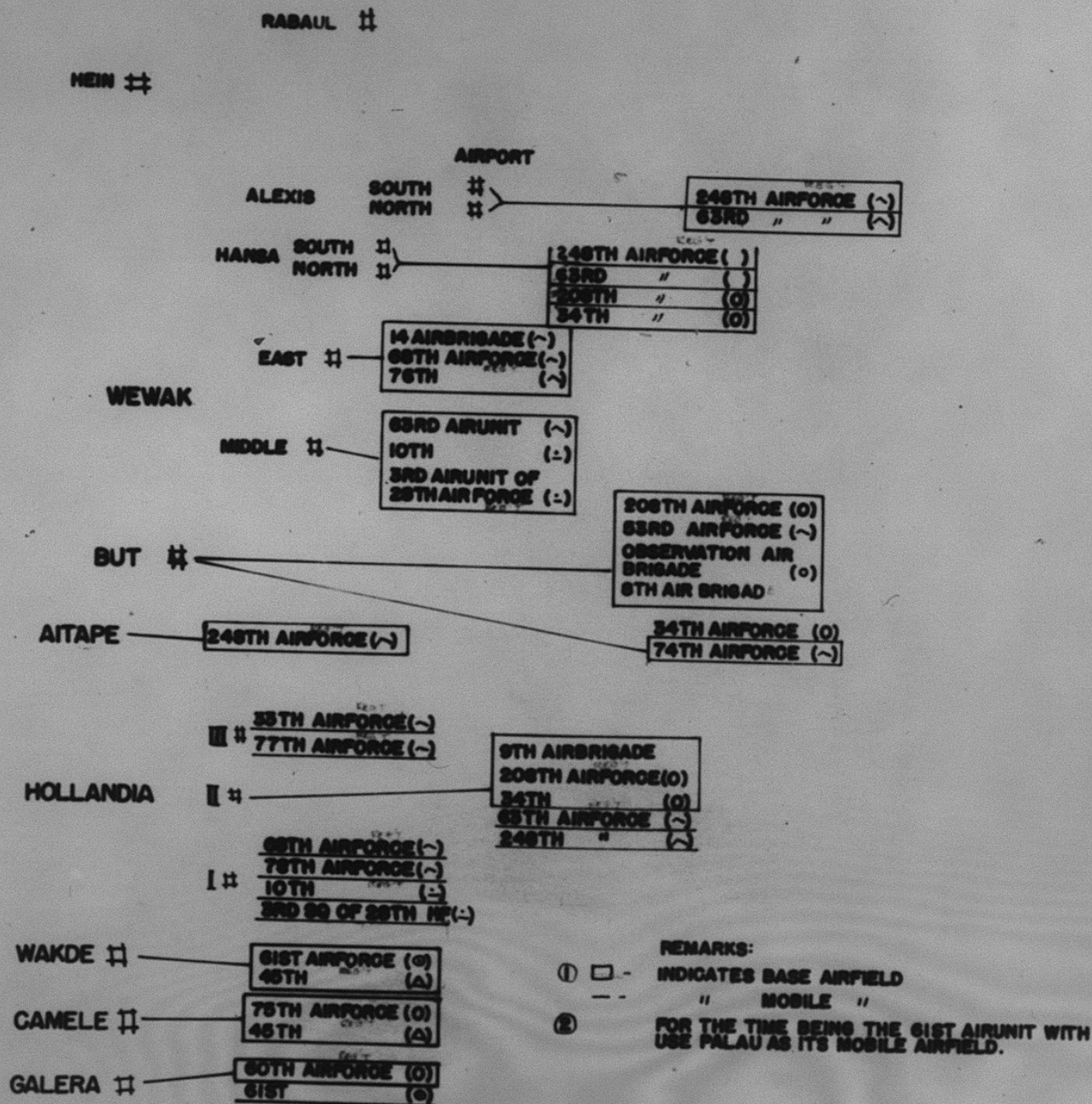
Separate Sheet No. 3

DISPOSITION OF AIR UNITS FOR INTERCEPTION OPERATIONS

36b

THE CHART SHOWS THE SITUATIONS OF INTERCEPTION AIR UNITS.

SEPARATE SHEET NO.3



Separate Sheet No. 4

OFFENSIVE DISPOSITION OF AIR UNITS

36c

First ten days

BISMARCK Area
(Total - 1,830
planes)

RABAUL - 1,350 Planes
Airfields, vessels, ci-
ties, dumps, anti-air-
craft position, etc.
Others (NEW IRELAND, ADMIR-
ALTY and northern coast
of NEW BRITAIN).

Total
3,860
planes

EASTERN NEW GUINEA
(Total - 1,100
planes)

(WEWAK, HANSA and MADONG
Coast)
(Most of them were directed
to WEWAK)

SOLOMON Area - total 930 planes

Second ten days -

BISMARCK Area
(Total - 3,000
planes)

RABAUL - 1,580 planes.
NEW IRELAND - 1,200 planes
(rapid increase)
Others

Total
4,730
planes

EASTERN NEW GUINEA
(Total - 3,000
planes)

(The main force joined in the
air battle against WEWAK).

SOLOMON Area

Total - 780 planes

Landing on ADMIRALTY.

On 29 February the enemy landed on the ADMIRALTY Islands. The 4th Air Army intended to attack with its entire force but due to bad weather and other conditions it was abandoned. Consequently the enemy landed without any difficulty.

Retreat of the Naval Units Located in RABAUL.

Prior to the enemy landing all the Naval Air Units moved to TRUK in the middle of February due to the battle situation in the CENTRAL PACIFIC Area. The enemy air force gained complete control of the air over RABAUL. The 8th Army Group made several requests to have the Naval airforce return to RABAUL again. However, this was refused for several reasons.

Placing of the 4th Air Army under the Command of the 2nd Army Group.

Since the enemy landed on the ADMIRALTY Islands, DANAPIER Strait was entirely controlled by the enemy. Consequently the Commander of the 8th Army Group in RABAUL lost direct control of the units in the NEW GUINEA area. In the middle of March the Commander of the 4th Air Army moved temporarily from WEWAK to HOLLANDIA and then in April moved to MANODO (CELEBES) to prepare for the ^{DUTCH EAST INDIES} ~~NORTHERN AUSTRALIAN~~ operation. From that time the air operation in the NEW GUINEA area was carried out by the 6th Air Div.

The military power of the 4th Air Army was estimated to be as follows at the end of March:

Table of the Outline of the Combat Force of the 4th Air Army (as of 26 March).

The 68th Air Fleet	(^)	11	
" 78th "	" (^)	11	
" 33rd "	" (^)	16	
" 63rd "	" (^)	8	
" 77th "	" (^)	4	
" 248th "	" (^)	4	
" 34th "	" (O)	10	
" 75th "	" (O)	16	
" 208th "	" (O)	6	
" 61st "	" (.)	4	Total - 127 Planes
" 60th "	" (.)	12	
" 45th "	" (Δ)	12	
" 10th "	" (-)	4	
" 83rd "	Squadron (.)	3	
" 20th "	" (1)	4	
" 7th "	Transp. Unit	2	

Situation of the enemy air force in March.

The general situation of the enemy airforce was as follows in March:

1. The total number of planes which participated in the attacks (the figures in the brackets indicate the total number of planes which participated in the attacks in February).

	BISMARCK Area	4,868 (4,200 were directed (6,430) against RABAU)
11,161	SOLOMON Area	2,227 (4,035)
(14,065)	EASTERN NEW GUINEA Area	4,066 (3,600)

Confirmed success of the Army Airforce. Shot down 103 planes (16 planes are unconfirmed).

2. Detail of the assaults.

RABAU area.

0 The main targets of the assaults were Army supply dumps and airfields.

◊ Since they were free from escort duties all fighters carried small size bombs and incendiaries and attacked in waves.

0 With the increase of carrier bombers B-24s became inactive.

0 The frequency of midnight raids to unnerve our troops were intensified.

SOLOMON area.

No large scale air raids. The enemy merely carried on reconnaissance mission.

NEW GUINEA area.

Battle for air supremacy in WEWAK, HANSA and HOLLANDIA.

Large scale daylight air raids by B-24s and A-20s.

On 30 March the HOLLANDIA districts was raided by a large scale of enemy planes. The 6th Air Division lost approximately 70 planes. Landing on HOLLANDIA.

On 22 April the enemy landed on HOLLANDIA and AITAPE. Due to the weakness of the ground positions both districts were captured immediately after the landing. Consequently, the 6th Air Division was completely deprived of its military strength. Later the 6th Air Division H.Q. and the attached units were deactivated.

The Army air operation in the SOUTHEASTERN area was temporarily suspended.

Attached Chart No. 1

CHART SHOWING CHANGES IN ORGANIZATION AND COMMAND
OF AIR FORCE UNITS IN THE SOUTHEAST AREA

Sept. 42 - Aug. 43

Attached Chart #2

CHART SHOWING CHANGES IN ORGANIZATION & COMMAND
OF THE AIR FORCE IN THE SOUTHEAST AREA

Sept 1943 - June 1944

CHART SHOWING CHANGES IN ORGANIZATION OF COMMAND OF THE AIR FORCE IN THE SOUTH-EAST AREAS

FROM SEPT-1943 TO JUNE-1944

PERIOD	1943				1944				
	SEPT.	OCTOBER	NOVEMBER	DEC.	JANUARY	FEBRUARY	MARCH	JUNE	
AREAS INDONESIA JAPAN PROPER CHINA	SOUTH - WEST SOUTH - WEST SOUTH - WEST SOUTH - WEST SOUTH - WEST SOUTH - WEST SOUTH - WEST SOUTH - WEST	SOUTH - EAST	1st CADET GROUP	4th AF (L) LIGHT BOMBERS (F)	6th AF (A) FIGHTERS	7th AF (F) FIGHTERS	8th AF (A) FIGHTERS	9th AF (L) LIGHT BOMBERS (F)	10th AF (F) HEB. RECON.
			1st CADET GROUP	4th AF (L) LIGHT BOMBERS (F)	6th AF (A) FIGHTERS	7th AF (F) FIGHTERS	8th AF (A) FIGHTERS	9th AF (L) LIGHT BOMBERS (F)	10th AF (F) HEB. RECON.
			1st CADET GROUP	4th AF (L) LIGHT BOMBERS (F)	6th AF (A) FIGHTERS	7th AF (F) FIGHTERS	8th AF (A) FIGHTERS	9th AF (L) LIGHT BOMBERS (F)	10th AF (F) HEB. RECON.
			1st CADET GROUP	4th AF (L) LIGHT BOMBERS (F)	6th AF (A) FIGHTERS	7th AF (F) FIGHTERS	8th AF (A) FIGHTERS	9th AF (L) LIGHT BOMBERS (F)	10th AF (F) HEB. RECON.
			1st CADET GROUP	4th AF (L) LIGHT BOMBERS (F)	6th AF (A) FIGHTERS	7th AF (F) FIGHTERS	8th AF (A) FIGHTERS	9th AF (L) LIGHT BOMBERS (F)	10th AF (F) HEB. RECON.
			1st CADET GROUP	4th AF (L) LIGHT BOMBERS (F)	6th AF (A) FIGHTERS	7th AF (F) FIGHTERS	8th AF (A) FIGHTERS	9th AF (L) LIGHT BOMBERS (F)	10th AF (F) HEB. RECON.
			1st CADET GROUP	4th AF (L) LIGHT BOMBERS (F)	6th AF (A) FIGHTERS	7th AF (F) FIGHTERS	8th AF (A) FIGHTERS	9th AF (L) LIGHT BOMBERS (F)	10th AF (F) HEB. RECON.
			1st CADET GROUP	4th AF (L) LIGHT BOMBERS (F)	6th AF (A) FIGHTERS	7th AF (F) FIGHTERS	8th AF (A) FIGHTERS	9th AF (L) LIGHT BOMBERS (F)	10th AF (F) HEB. RECON.

REMARKS

SOUTH - WEST

SOUTH - WEST

SOUTH - WEST

SOUTH - WEST

SOUTH - WEST

SOUTH - WEST

SOUTH - WEST

SOUTH - WEST

SOUTH - WEST

SOUTH - WEST

SOUTH - WEST

SOUTH - WEST

SOUTH - WEST

SOUTH - WEST

SOUTH - WEST

SOUTH - WEST

SOUTH - WEST

SOUTH - WEST

SOUTH - WEST

SOUTH - WEST

SOUTH - WEST

SOUTH - WEST

SOUTH - WEST

SOUTH - WEST

SOUTH - WEST

SOUTH - WEST

SOUTH - WEST

SOUTH - WEST

SOUTH - WEST

SOUTH - WEST

SOUTH - WEST

SOUTH - WEST

SOUTH - WEST

SOUTH - WEST

SOUTH - WEST

SOUTH - WEST

SOUTH - WEST

SOUTH - WEST

SOUTH - WEST

SOUTH - WEST

SOUTH - WEST

SOUTH - WEST

SOUTH - WEST

SOUTH - WEST

SOUTH - WEST

SOUTH - WEST

SOUTH - WEST

SOUTH - WEST

SOUTH - WEST

SOUTH - WEST

SOUTH - WEST

SOUTH - WEST

SOUTH - WEST

SOUTH - WEST

SOUTH - WEST

SOUTH - WEST

SOUTH - WEST

SOUTH - WEST

SOUTH - WEST

SOUTH - WEST

SOUTH - WEST

SOUTH - WEST

SOUTH - WEST

SOUTH - WEST

SOUTH - WEST

SOUTH - WEST

SOUTH - WEST

SOUTH - WEST

SOUTH - WEST

SOUTH - WEST

SOUTH - WEST

SOUTH - WEST

SOUTH - WEST

SOUTH - WEST

SOUTH - WEST

SOUTH - WEST

SOUTH - WEST

SOUTH - WEST

SOUTH - WEST

SOUTH - WEST

SOUTH - WEST

SOUTH - WEST

SOUTH - WEST

SOUTH - WEST

SOUTH - WEST

SOUTH - WEST

SOUTH - WEST

SOUTH - WEST

SOUTH - WEST

SOUTH - WEST

SOUTH - WEST

SOUTH - WEST

SOUTH - WEST

SOUTH - WEST

SOUTH - WEST

SOUTH - WEST

SOUTH - WEST

SOUTH - WEST

SOUTH - WEST

SOUTH - WEST

SOUTH - WEST

SOUTH - WEST

SOUTH - WEST

SOUTH - WEST

SOUTH - WEST

SOUTH - WEST

SOUTH - WEST

SOUTH - WEST

SOUTH - WEST

SOUTH - WEST

SOUTH - WEST

SOUTH - WEST

SOUTH - WEST

SOUTH - WEST

SOUTH - WEST

SOUTH - WEST