

DECLASSIFIED

ONI 54-A • RESTRICTED

9/5/43 • Division of Naval Intelligence • Identification and Characteristics Section

NAVAL AUXILIARIES



TENDERS



World War I types p. 4-5



Large p. 6-7



Small p. 8

PASSENGER



World War I types p. 9



Maritime types p. 10-11



Miscellaneous, 2 stacks p. 12-13



Miscellaneous, 1 stack p. 14-15



Miscellaneous p. 16

U. S. FLEET TRAIN—

AD Destroyer Tenders

		Page
2	MELVILLE	28
3, 4	DOBBIN Class	4
9	BLACK HAWK	28
11, 12	ALTAIR Class	28
14, 15, 17-19	DIXIE Class	7
16	CASCADE	10
20, 21	HAMUL Class	22

AS Submarine Tenders

3	HOLLAND	5
5	BEAVER	16
11, 12, 15 19	FULTON Class	7
13, 14	GRIFFIN Class	22
20	OTUS	26
21	ANTEAUS	16

AR Repair Ships

1	MEDUSA	5
3, 4	PROMETHEUS Class	28
5-	VULCAN Class	7
9, 12	DELTA Class	22
10	ALCOR	14
11	RIGEL	28

ARH Hull Repair Ships

1	JASON	7
---	-------	---

AGC Operations and Command Headquarters Ships

1-3	APPALACHIAN Class	19
4	ANCON	11

AV Seaplane Tenders

1	WRIGHT	9
4, 5	CURTISS Class	6
8	TANGIER	23
9, 10	POCOMOKE Class	23

AVP Seaplane Tenders, Small

10-	BARNEGAT Class	8
-----	----------------	---

AGP Motor Torpedo Boat Tenders

6-	OYSTER BAY Class	8
----	------------------	---

Division of Naval Intelligence—Identification and Characteristics Section

AP Troop Transports

		Page
6	BURROWS	14
7	WHARTON	9
21, 22	WAKEFIELD Class	12
23	WEST POINT	13
24	ORIZABA	13
29	U. S. GRANT	14
31, 32	CHATEAU THIERRY Class	9
33	REPUBLIC	14
41	STRATFORD	14
54, 61	HERMITAGE Class	13
63	ROCHAMBEAU	12
67	DOROTHEA L. DIX	25
69-71, 76	ELIZ. STANTON Class	23
72	SUSAN B. ANTHONY	15
75	GEMINI	17
77	THURSTON	20
110-	"GENERAL" Class	10

APA Attack Transports

1, 11	DOYEN Class	30
2, 3, 12, 14-17	HARRIS Class	9
4, 5	McCAWLEY, BARNETT	15
6-9	HEYWOOD Class	15
10, 23	HARRY LEE Class	14
13	J. T. DICKMAN	9
18-20, 29, 30	PRESIDENT Class	10
21, 28, 31, 32	CRESCENT CITY Class	11
25-27, 31	MIDDLETON Class	11
33-48	BAYFIELD Class	24
49-51	ORMSBY Class	20
52-56	SUMNER Class	24
89, 90	FUNSTON Class	26

APH Wounded Evacuation Transports

1-3	TRYON Class	25
-----	-------------	----

AH Hospital Ships

1, 9	RELIEF Class	5
5	SOLACE	16
10	CHAUMONT	9
11	KENMORE	9

ONI 54-A • RESTRICTED 9/5/43**AK Cargo Ships**

		Page
13, 15-17	CAPELLA Class	17
14	REGULUS	17
41	HERCULES	25
42, 43	MERCURY Class	19
46	PLEIADES	27
47	AQUILA	27
48	PEGASUS	27
49	SATURN	27
51	ARIES	17
63	ASTERION	
70-79, 90-97, 99-108	CRATER Class	25
80-89	ENCELADUS Class	36
98	AURIGA	26

AKA Attack Cargo Ships

1, 6-8, 11	ARCTURUS Class	18
2-4, 12-14	PROCYON Class	21
5	FOMALHAUT	26
9	ALHENA	26
10	ALMAACK	25
15-20	ANDROMEDA Class	19
21-		35

AKS General Stores Issue Ships

1	CASTOR	19
3	ANTARES	17
4	POLLUX	20

AE Ammunition Ships

1, 2	PYRO Class	4
3-9	LASSEN Class	21
10	SANGAY	26

AF Provision Storeships

1	BRIDGE	5
7-9	ARCTIC Class	17
10	ALDEBARAN	19
11	POLARIS	18
12, 13, 15, 17, 21, 22	MIZAR Class	16
14	URANUS	29
16, 18	PASTORES Class	16

LARGE AUXILIARIES

		Page
19	ROAMER	27
20	PONTIAC	27
23, 25	CYGNUS Class	28
24	DELPHINUS	28
26	OCTANS	16

AG Miscellaneous Auxiliaries

1	HANNIBAL	29
12	GOLD STAR	17
29	BEAR	29
30	BOWDITCH	14
31	ARGONNE	9
32	SUMNER	29
33	KAULA	35
36, 39, 40	MANASQUAN Class	17
42, 45, 46-48, 66	CAMANGA Class	29
43	MAJABA	29
44	MALANAO	35
49	ANACAPA	8

AO Oilers

3-6	KANAWHA Class	31
2	MAUMEE	31
9, 11-13, 18-21	PATOKA Class	31
15, 16	KAWEAH Class	31
22-32, 51-64	CIMARRON Class	32
34-35	CHICOPEE Class	33
36-40, 48, 69-72	KENNEBEC Class	32
41-44, 47	MATTAPONI Class	33
45	BIG HORN	34
46	VICTORIA	36
49, 50	SUAMICO Class	34
65, 67, 68, 73-	PECOS Class	33
66	ATACOSTA	34

AOG (YO) Gasoline Tankers

	Miscellaneous	35, 36
--	---------------	--------

APM Mechanized Artillery Transport

9	LAKEHURST	35
---	-----------	----

AKV Cargo Ship—Aircraft Ferry

1, 2	KITTY HAWK Class	35
------	------------------	----

CARGO

World War I types p. 17



C2 Conversions p. 18-21



C3 Conversions p. 22-23



Miscellaneous Maritime types p. 24-26



Miscellaneous p. 27-30

ENGINES AFT

World War I types p. 31



Navy—Maritime types p. 32-33

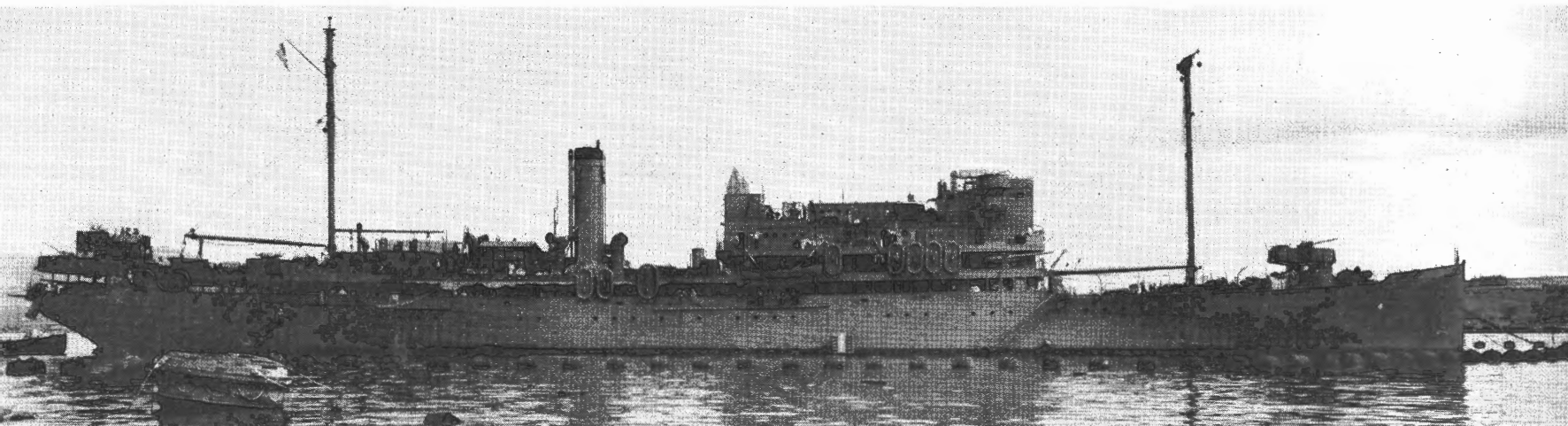


Miscellaneous p. 34-36

WORLD WAR I TENDERS—AD • AR • AS • AE • AF • AH

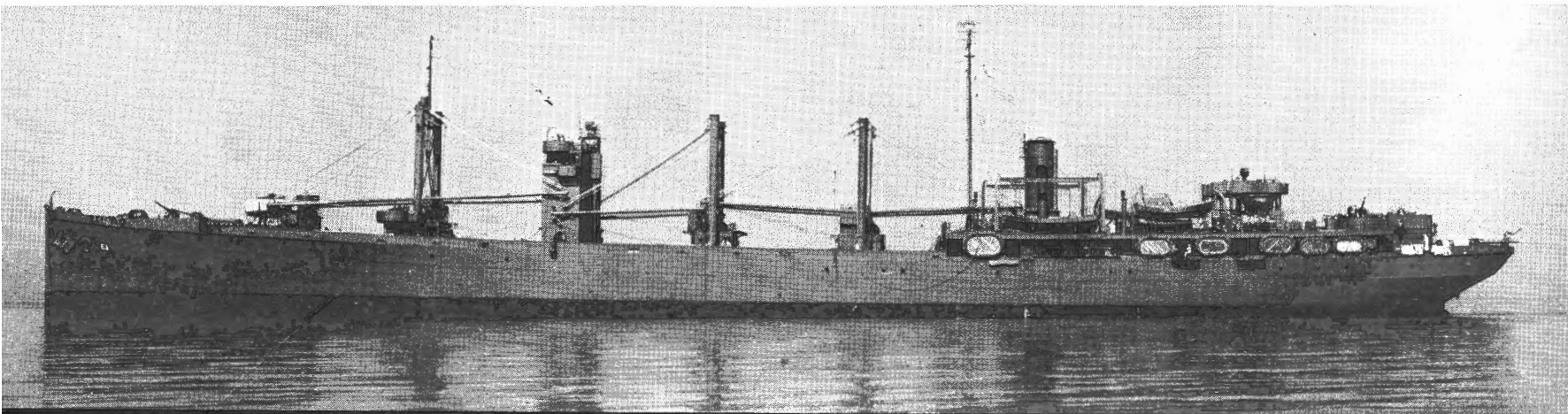
Division of Naval Intelligence—Identification and Characteristics Section

The first Navy-built Train; originally one design. Formed the basis of the peacetime tender fleet.



DOBBIN Class—AD 3, 4 ▲ WHITNEY 4/17/42

PYRO Class—AE 1, 2 ▼ PYRO

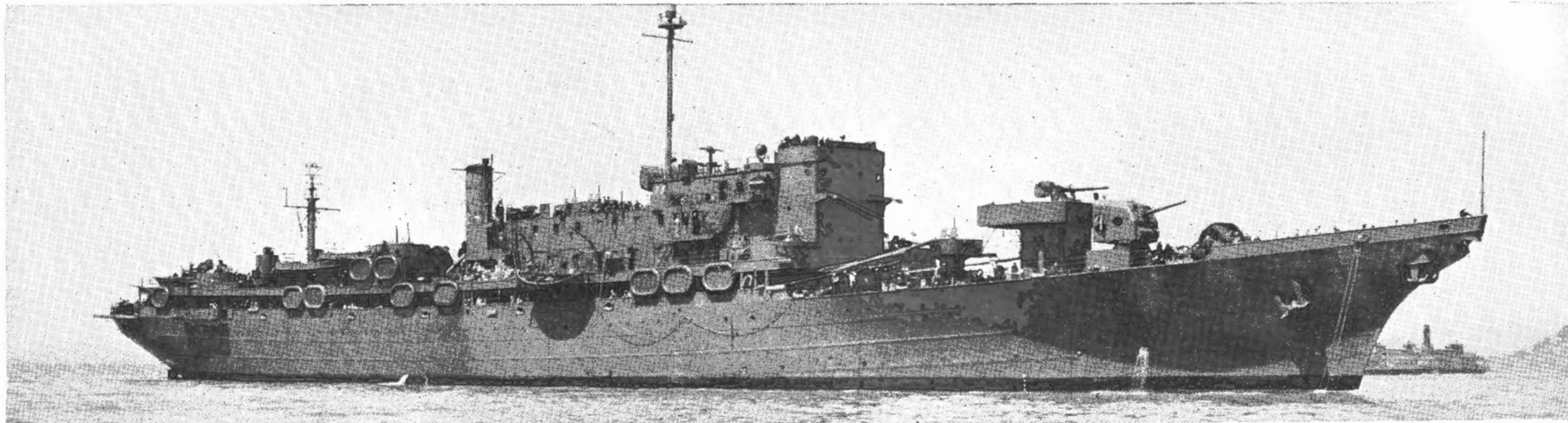


● **ONI 54-A • RESTRICTED**

5-9/5/43

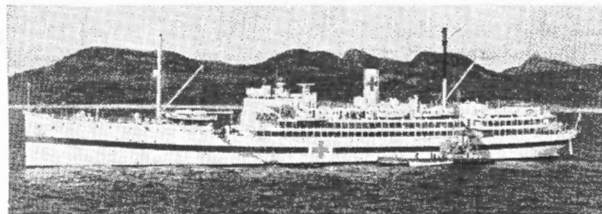
WORLD WAR I TENDERS

▼ HOLLAND—AS 3-4/22/43

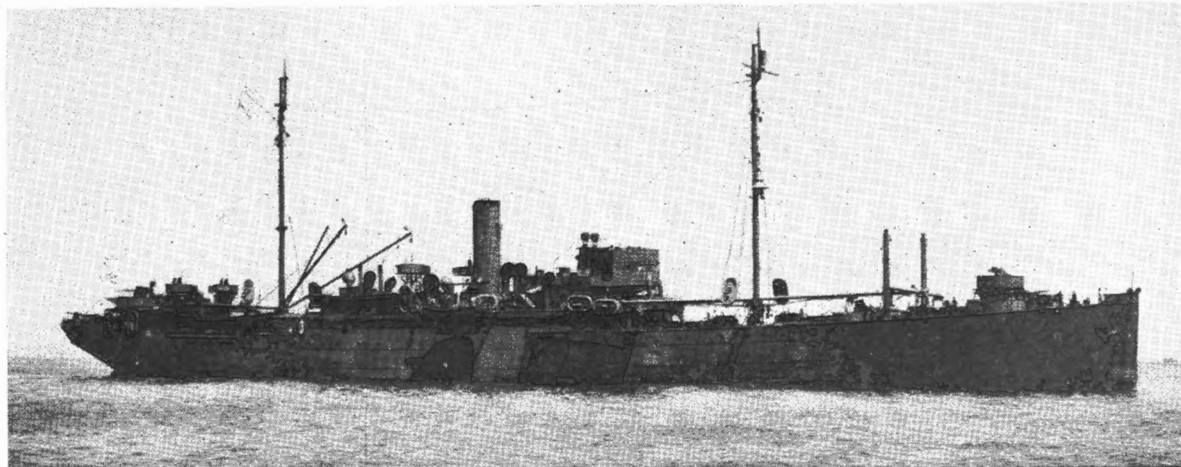
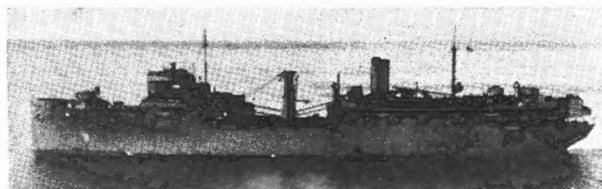


● RELIEF Class—AH 1,9 ▼ RELIEF

▼ BRIDGE—AF 1-8/8/42



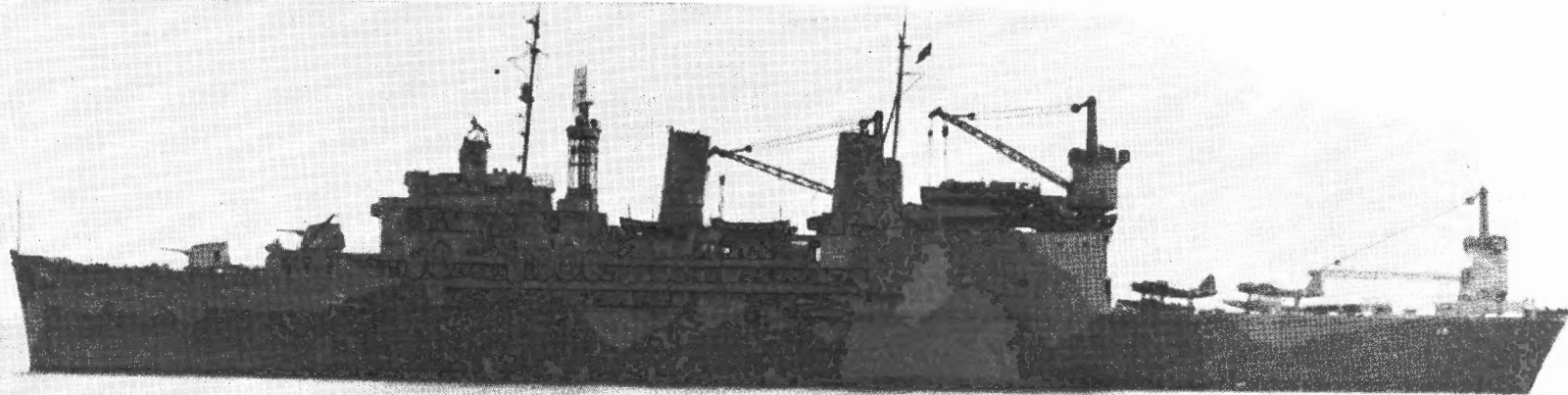
▼ MEDUSA—AR1-2/15/43



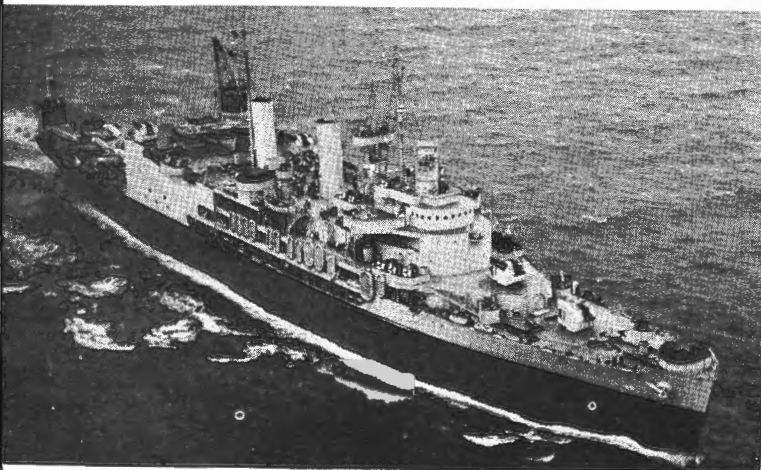
LARGE TENDERS — AD • AR • AS • AV

Based on one general design and adapted to fulfill each specific Train function

Division of Naval Intelligence—Identification and Characteristics Section



CURTISS Class—AV 4, 5 all photos ALBEMARLE-4/43-6/10/43

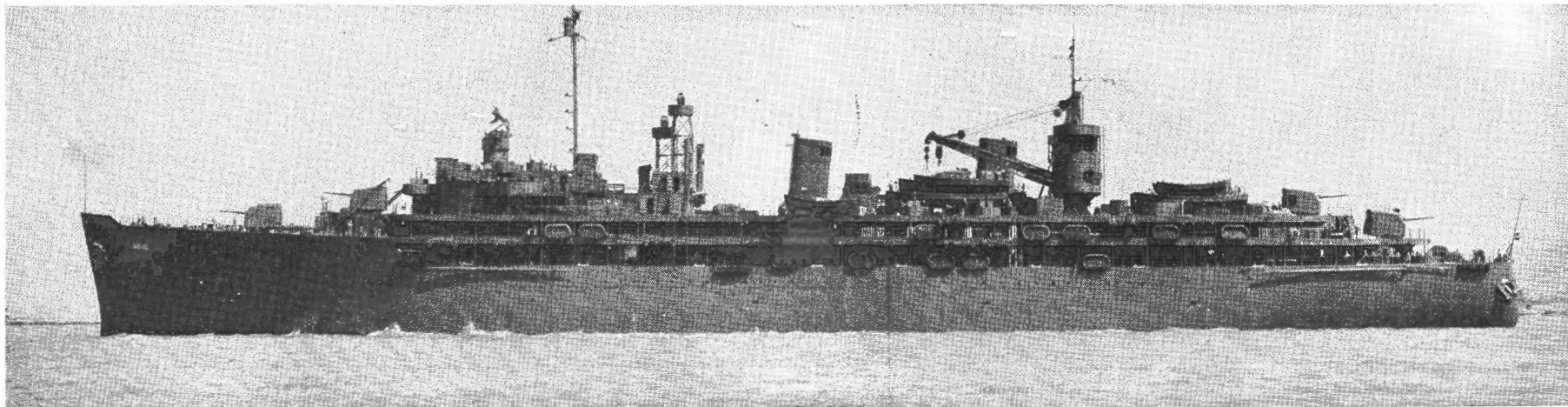


ONI 54-A • RESTRICTED

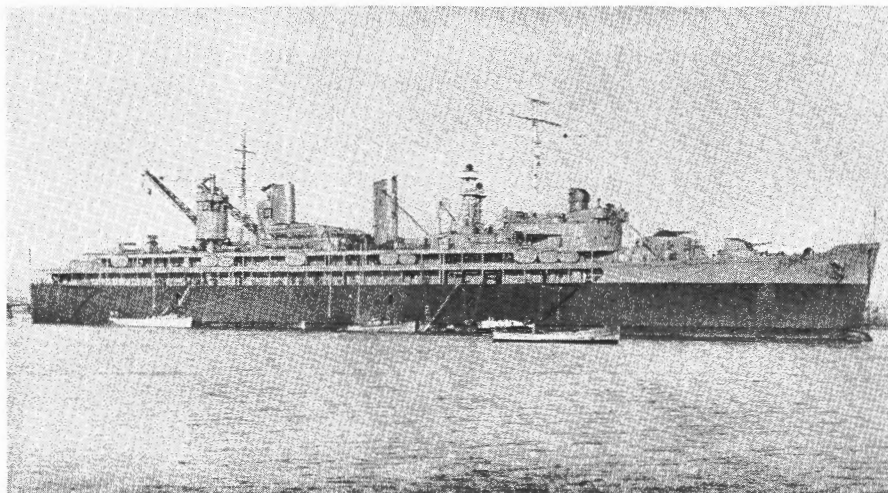
9/5/43

LARGE TENDERS

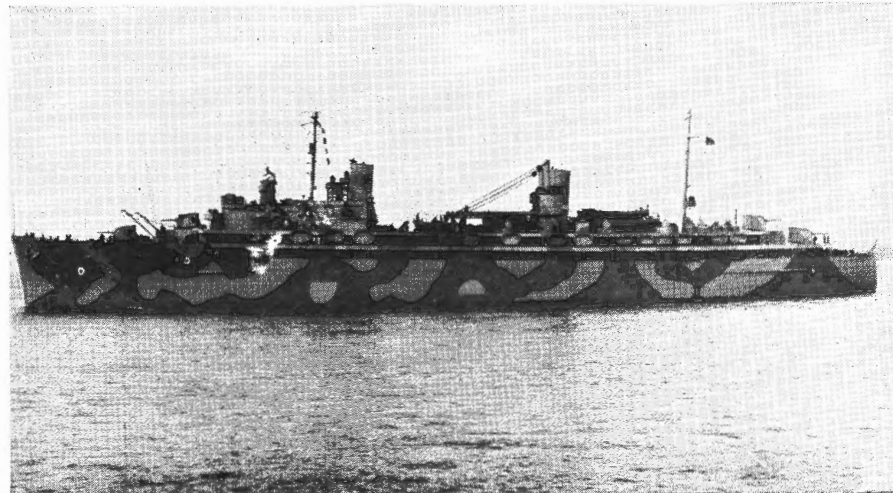
FULTON Class—AS 11, 12, 15-19 ▼ SPERRY—7/24/42



DIXIE Class—AD 14, 15, 17-19 ▼ PRAIRIE



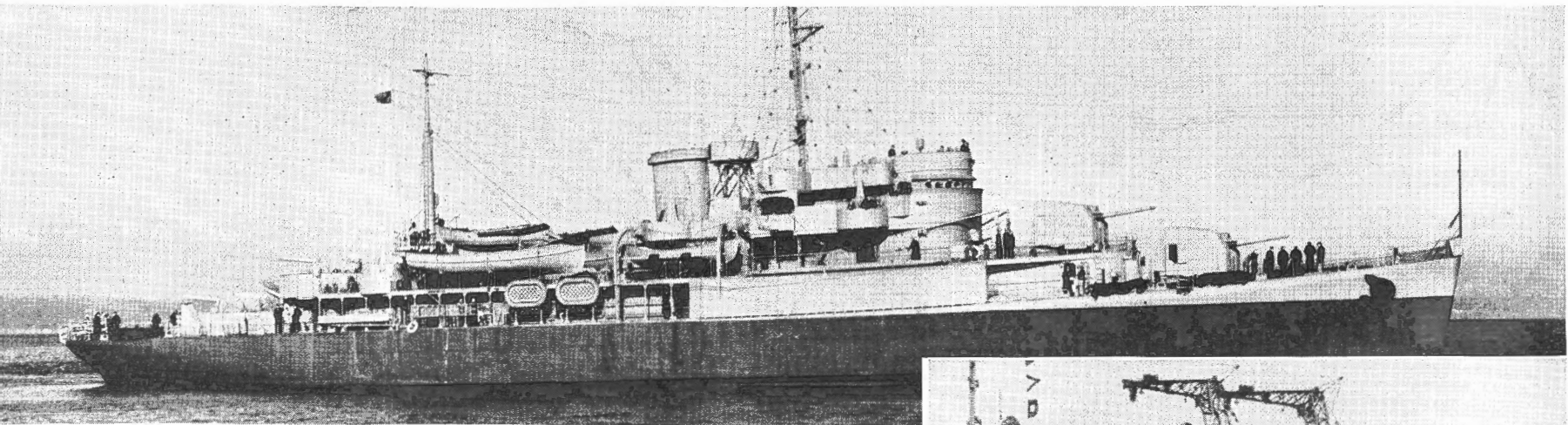
VULCAN Class—AR 5-8 (ARH 1 similar) ▼ VULCAN—6/10/42



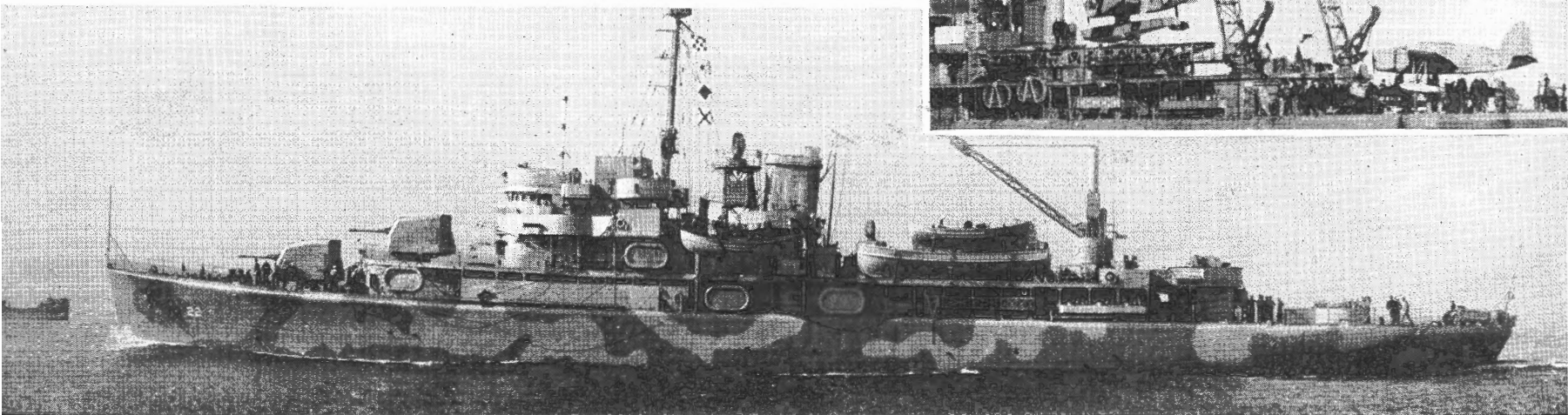
SMALL TENDERS—AVP • AGP • AG

Division of Naval Intelligence—Identification and Characteristics Section

A multipurpose design employed as seaplane and small craft tenders, and in escort and patrol duties. Note the variation in aircraft-handling facilities and armament



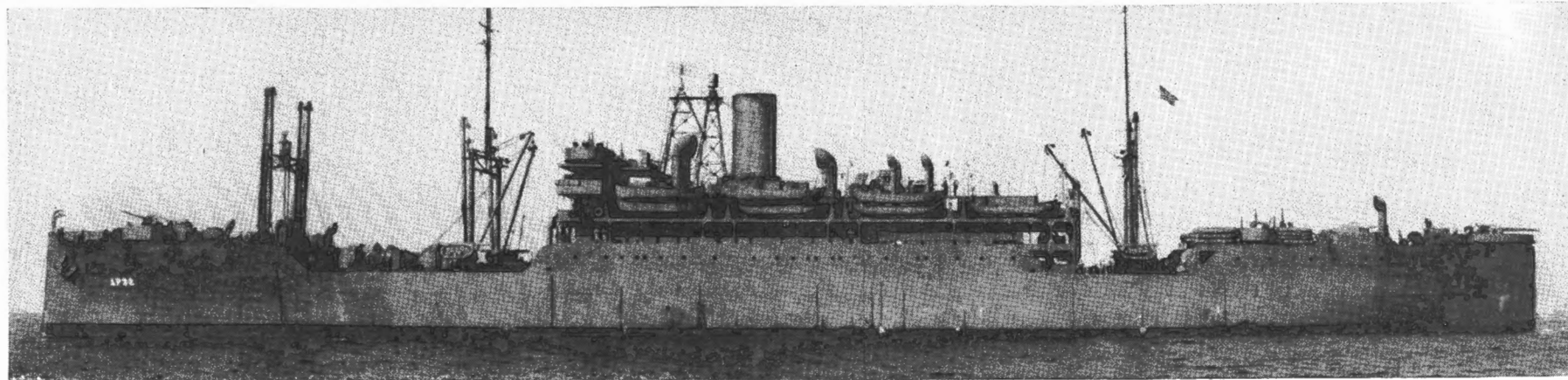
BARNEGAT Class—AVP ▲ SAN PABLO-3/9/43 ▼ MATAGORDA-4/11/42 ABSECON-1/17/43 ►



ONI 54-A • RESTRICTED 9/5/43

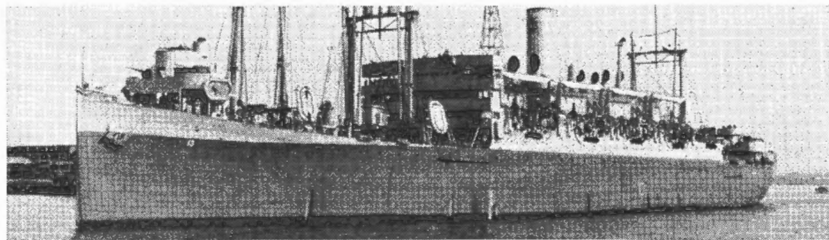
PASSENGER—WORLD WAR I TYPES—AP • APA • AH • AV

CHATEAU THIERRY Class—AP 31, 32, AG 31, AH 10—USSB "HOG ISLAND"ers ▼ ST. MIHIEL—7/5/43 Sister ships SOMME, CAMBRAI are Army-operated

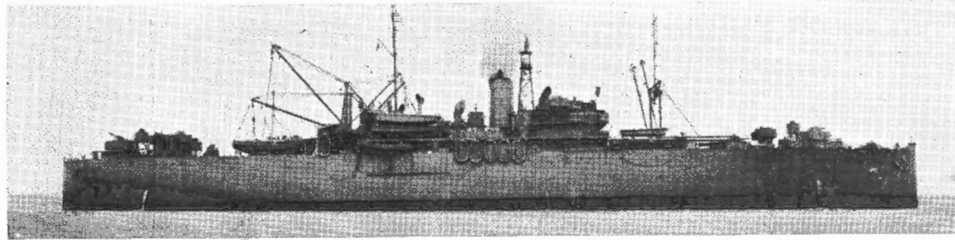


▼ J. T. DICKMAN—4/8/43

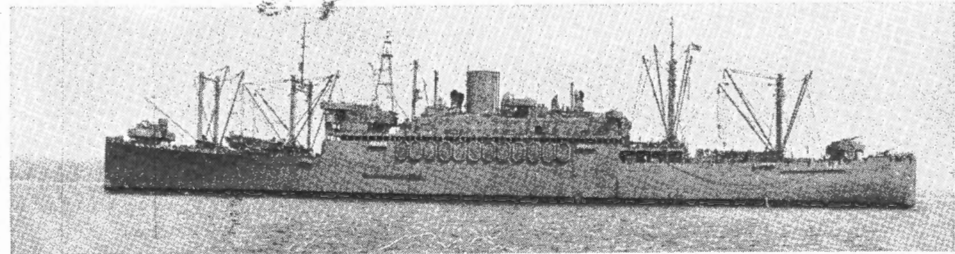
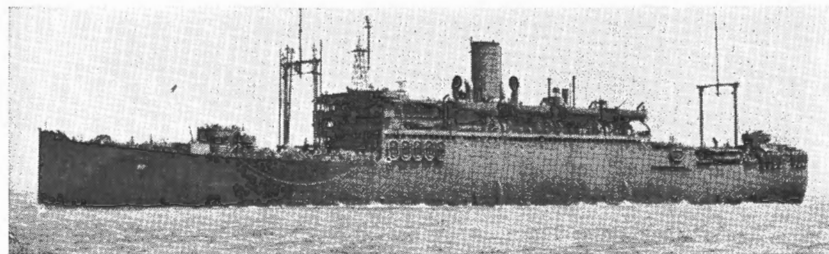
▼ WRIGHT—AV 1—7/13/43 converted from "HOG ISLAND 440" type



◆ WHARTON Class—AP 7, APA 13 A variation of the HARRIS Class



▼ HARRIS Class—APA 2, 3, 12, 14-17 USSB "STATE" type—AH 11 similar

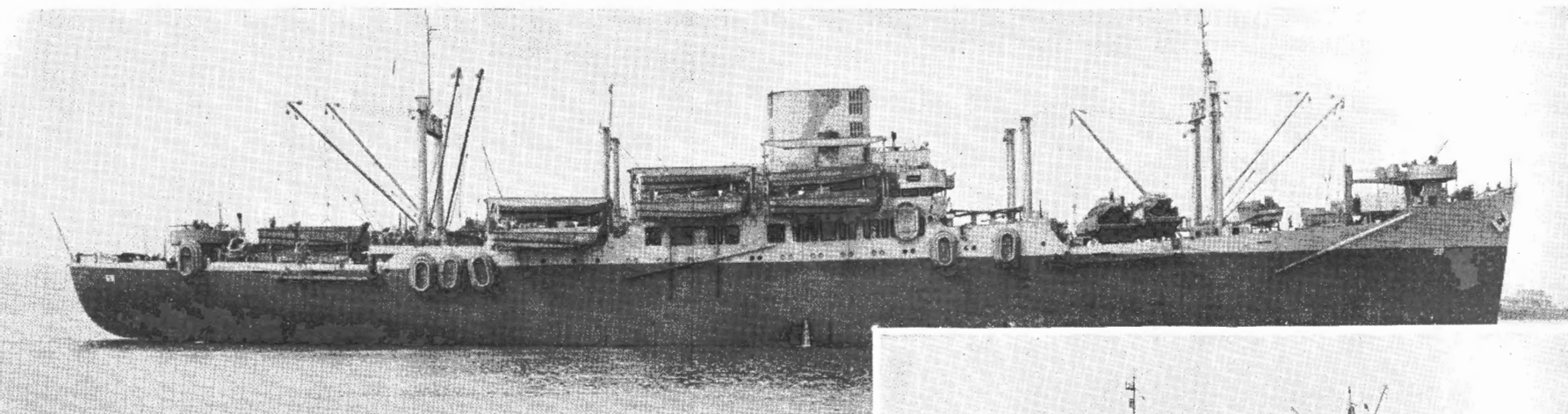


PASSENGER—MARITIME COMMISSION TYPES—AP • APA • AD • AGC

Division of Naval Intelligence—Identification and Characteristics Section

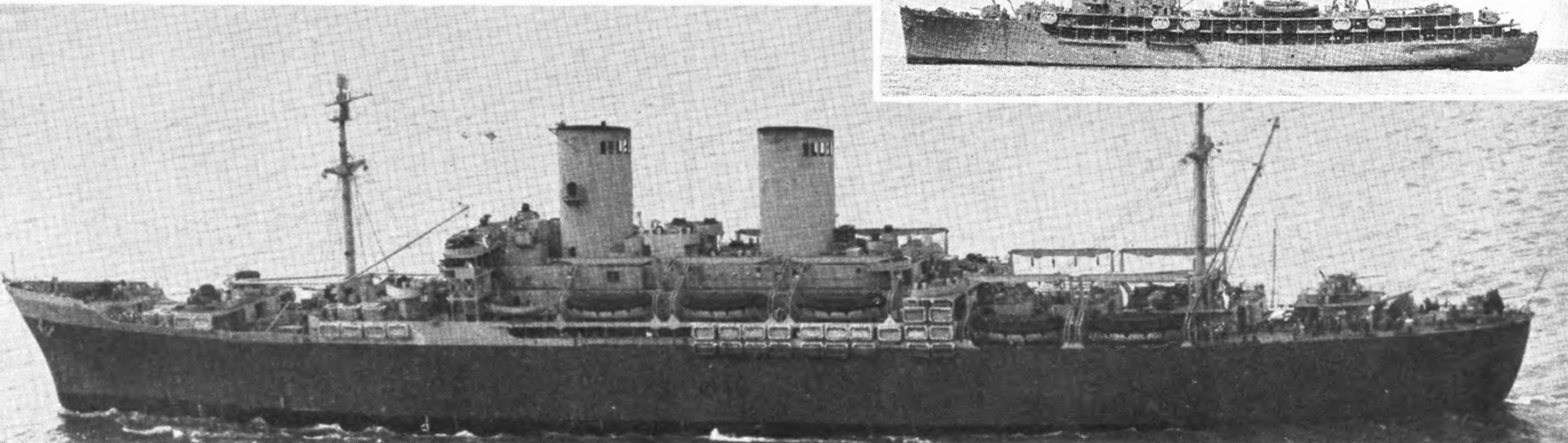
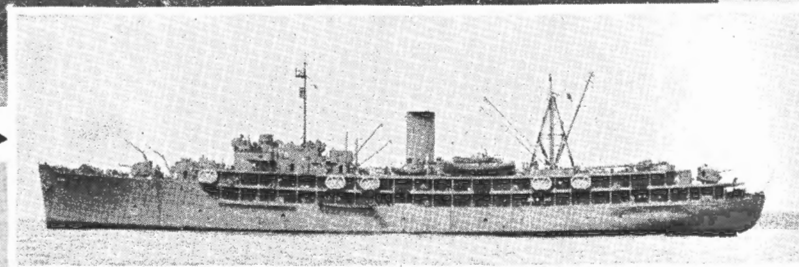
"PRESIDENT" Class—APA 18-20, 29, 30 C3-P & C Type

▼ THOMAS STONE-9/15/42



"GENERAL" Class - AP 110 P2-S2-R2 design ▼

CASCADE-AD 16-4/28/43 ▶



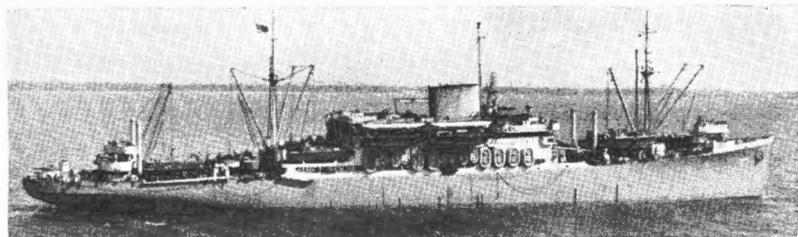
ONI 54-A • RESTRICTED

5—9/5/43

PASSENGER-MARITIME COMMISSION TYPES

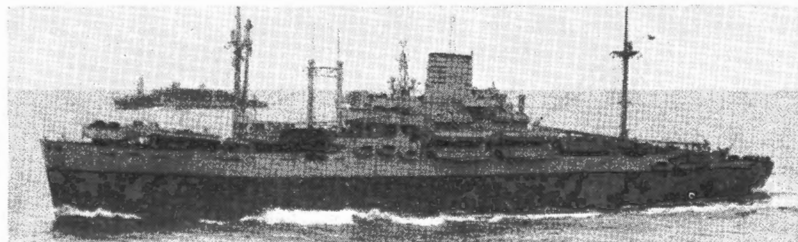
▼ CRESCENT CITY Class—APA 21, 28, 31, 32, P & C type, former Delta Liners

▼ CALVERT—12/24/42



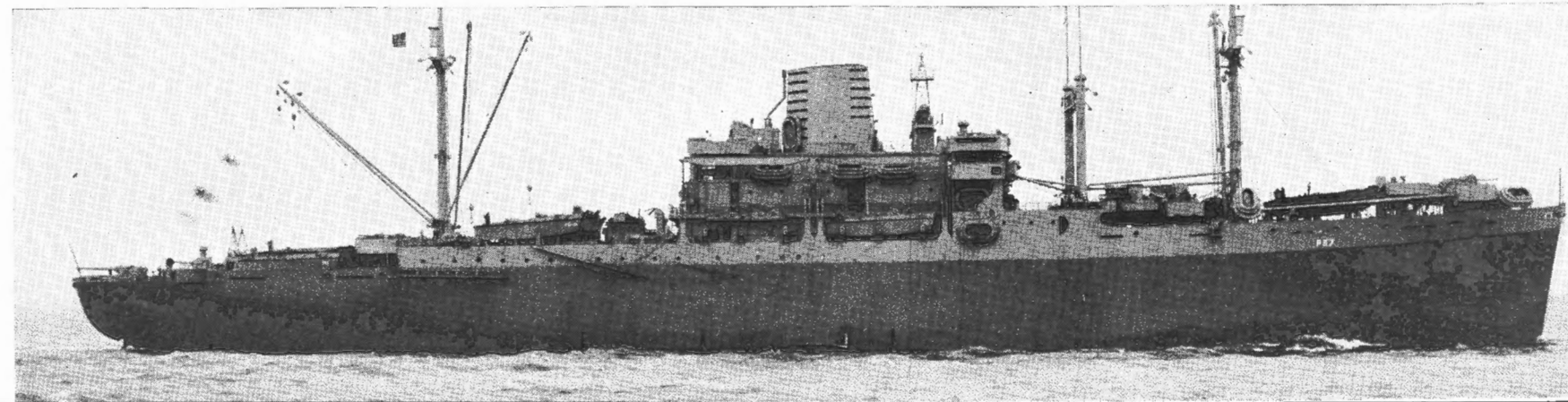
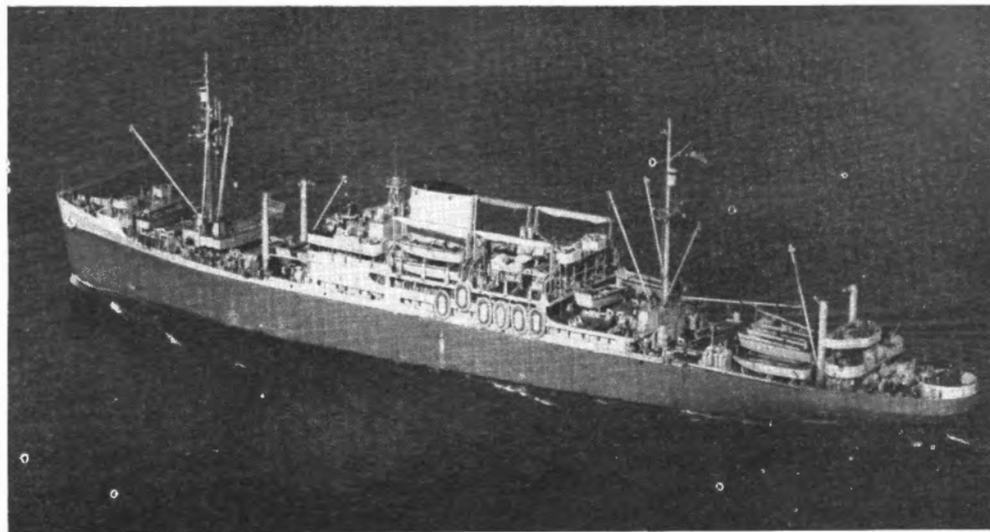
▲ CARROLL—5/6/43

ARTHUR MIDDLETON ▼



▲ ARTHUR MIDDLETON Class—APA 25-27, 31, AGC 4, USAT PARKER, C3-P & C type, former American-S. Africa and Panama Lines

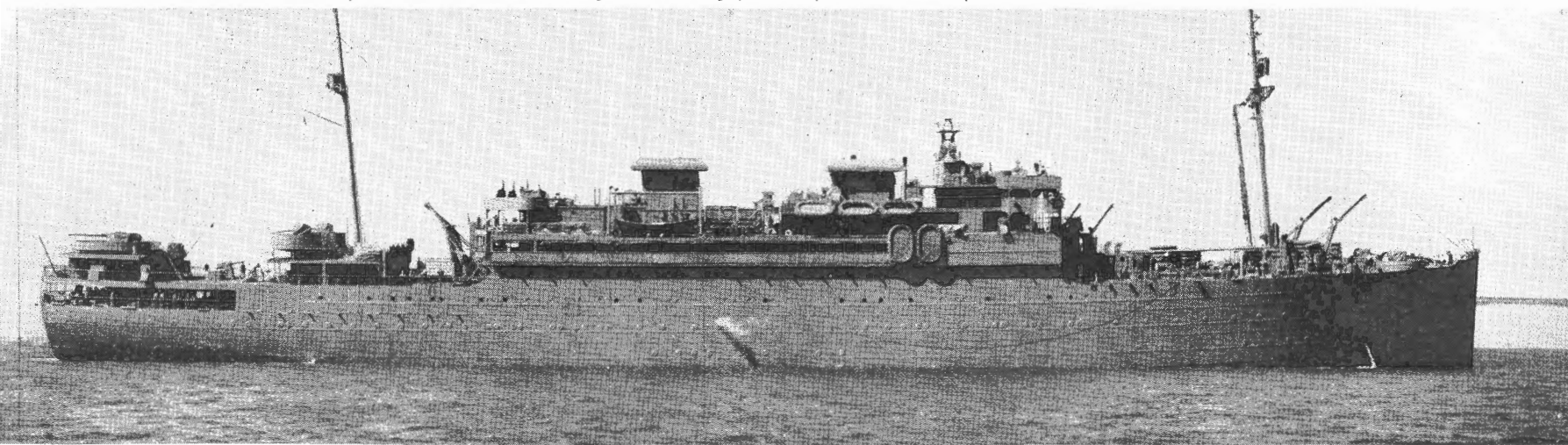
▼ GEORGE CLYMER—9/1/42



PASSENGER—MISCELLANEOUS TWO-STACKERS—AP

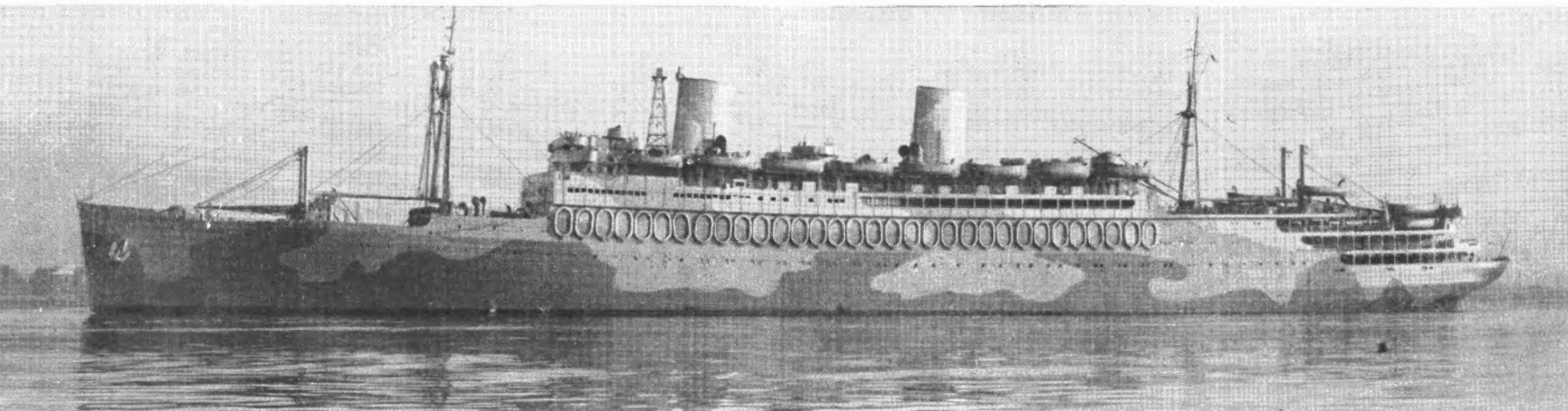
Division of Naval Intelligence—Identification and Characteristics Section

▼ ROCHAMBEAU-AP 63, 10/5/42, ex-MARECHAL JOFFRE. The Japanese operate a sister ship



WAKEFIELD Class—AP 21, 22, ex-MANHATTAN, WASHINGTON

▼ WAKEFIELD-5/11/42

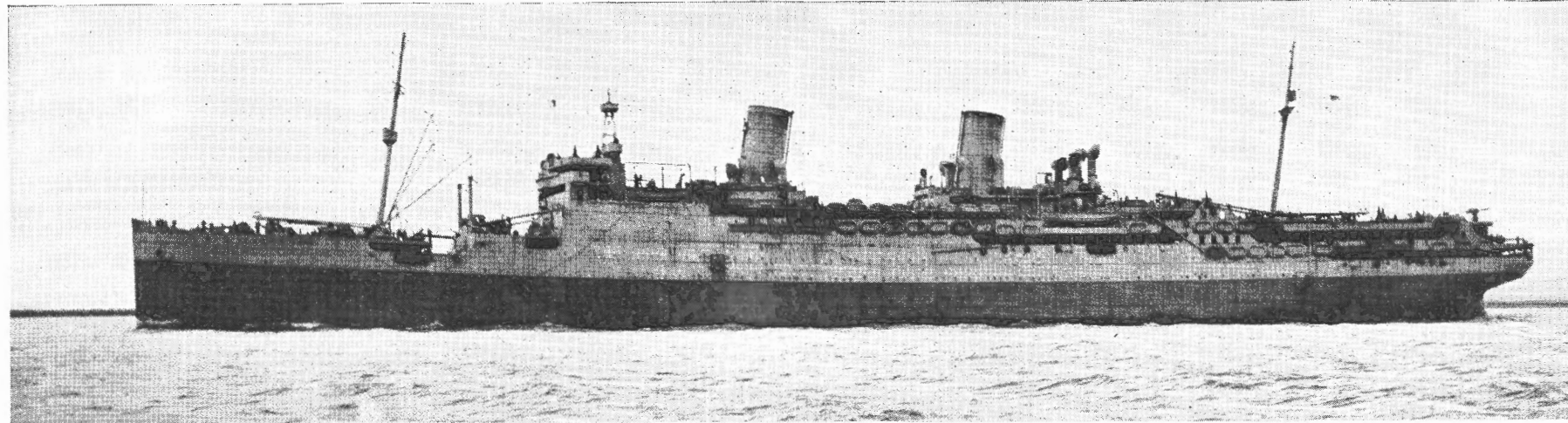


ONI 54-A • RESTRICTED

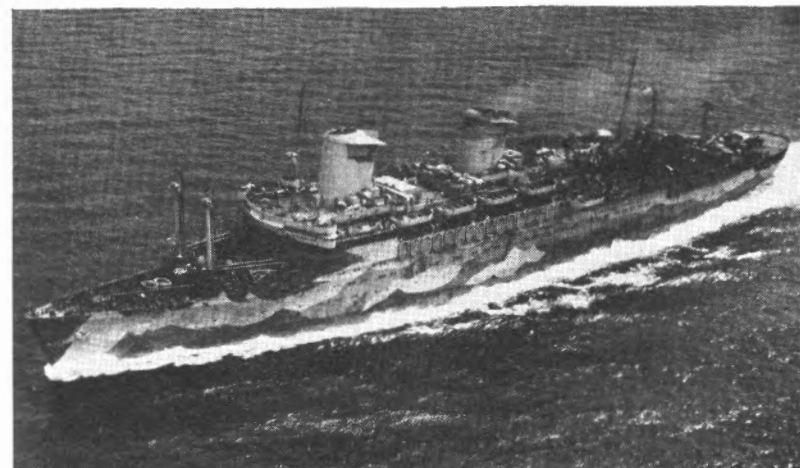
5-9/5/43

PASSENGER—MISCELLANEOUS TWO-STACKERS

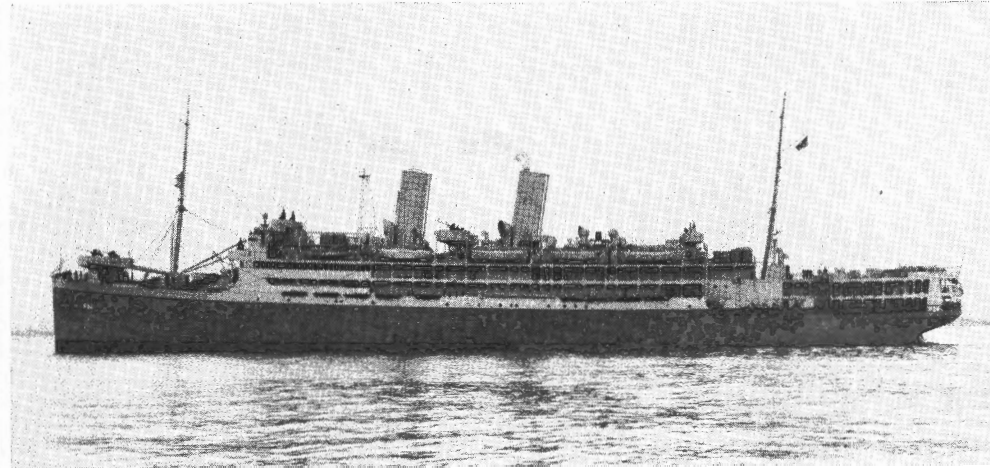
▼ HERMITAGE Class—AP 54, 61, 3/26/43, ex-Italian CONTE BIANCAMANO, CONTE GRANDE—sister ship CONTE VERDE is Japanese controlled



▼ WEST POINT—AP 23, 6/43, ex-AMERICA



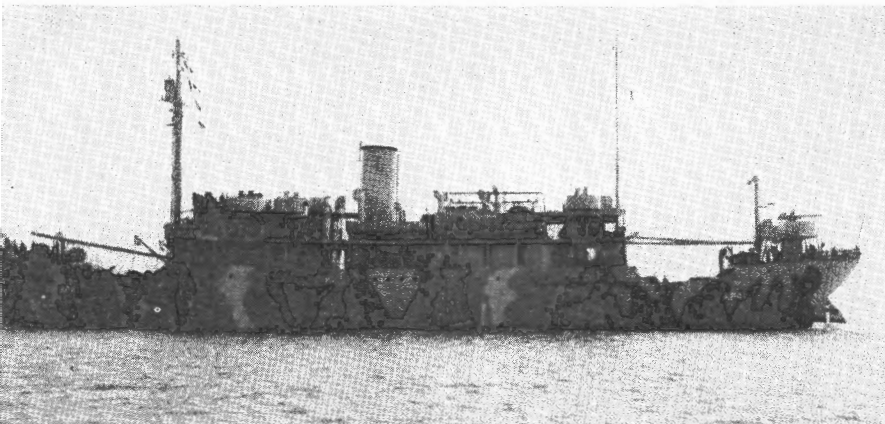
▼ ORIZABA—AP 24, 11/17/42, Former NY & Cuba Mail Line



PASSENGER—MISCELLANEOUS ONE-STACKERS—AP • APA • AG • AR

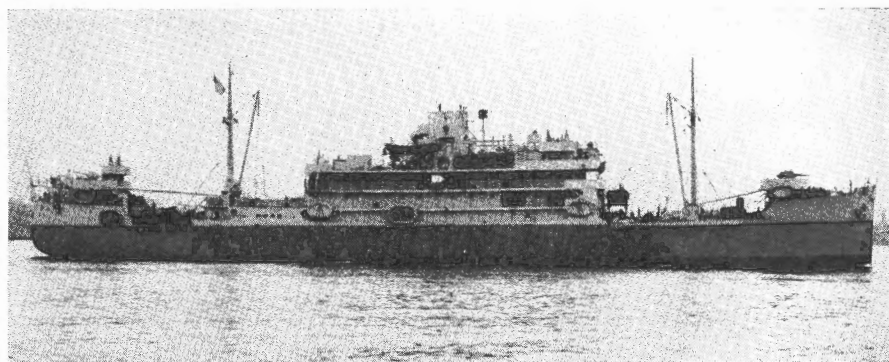
Division of Naval Intelligence—Identification and Characteristics Section

▼ STRATFORD—AP 41, 5/4/42. U. S. Shipping Board "Laker"

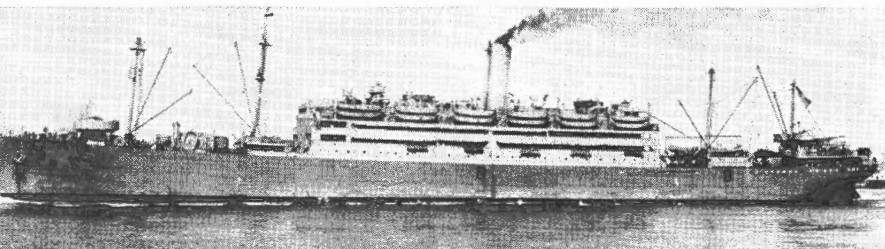


▼ BOWDITCH—AG 30-12/28/42

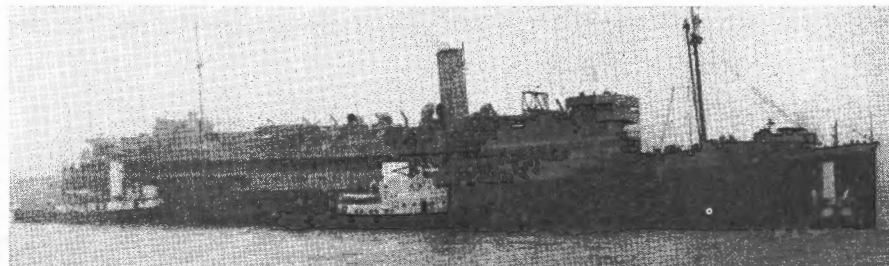
BURROWS—AP 6 similar



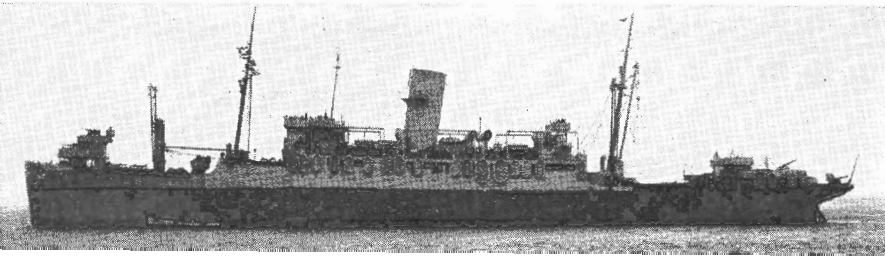
▼ REPUBLIC—AP 33



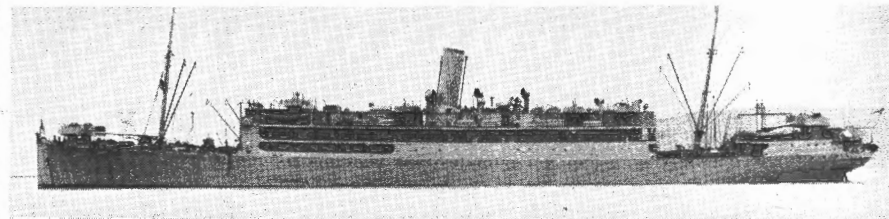
▼ ALCOR—AR 10—preconversion



▼ HARRY LEE Class—APA 10, 23. Formerly American Export Liners—5/14/43



▼ U. S. GRANT—AP 29, with REPUBLIC served as peacetime Army transports



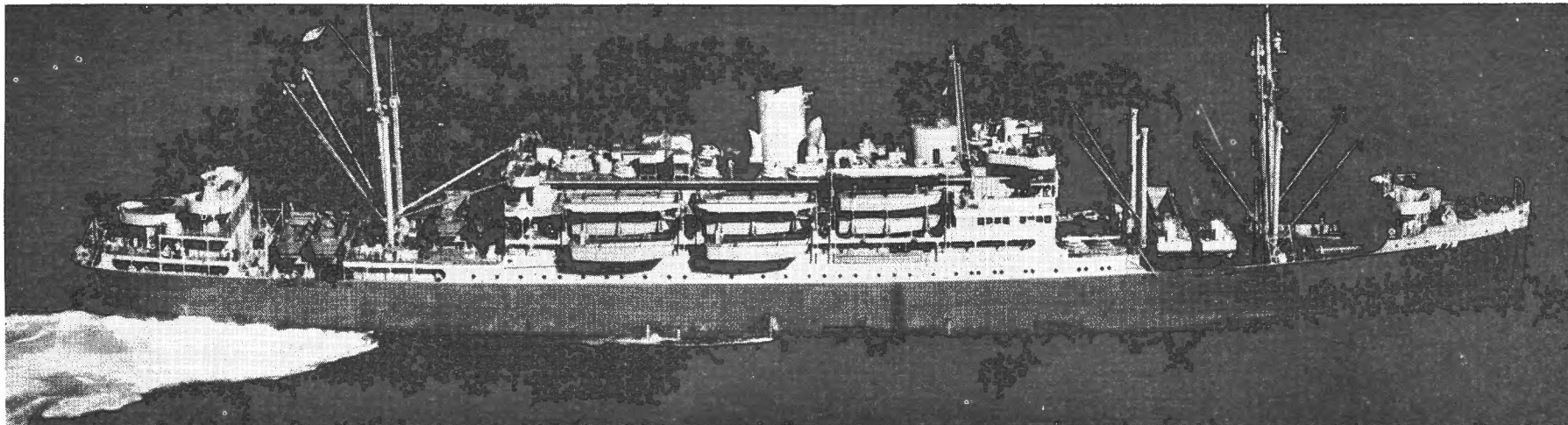
ONI 54-A RESTRICTED

9/5/43

PASSENGER—MISCELLANEOUS ONE-STACKERS

SUSAN B. ANTHONY Class—AP 72, APA 4, 5 (ex-Grace Liners)

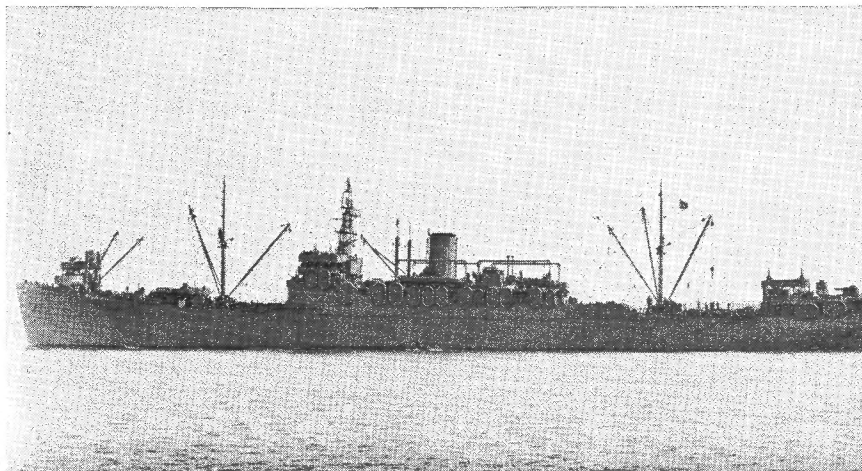
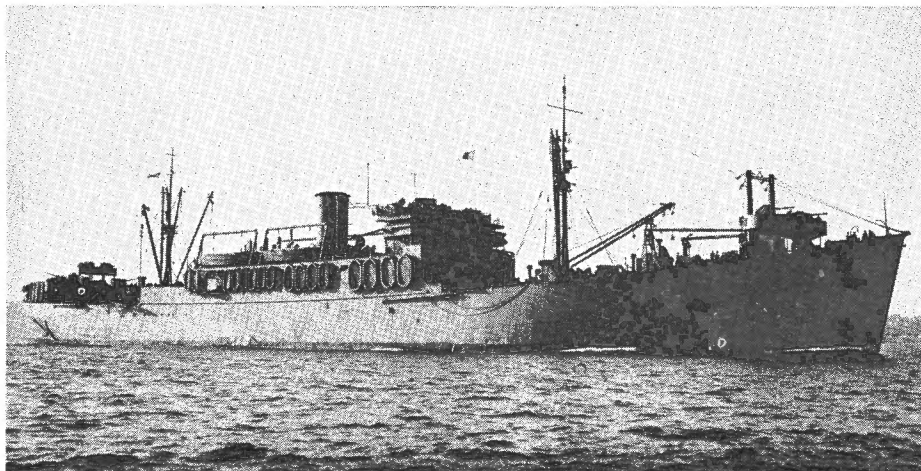
▼ ANTHONY 9/14/42



▼ NEVILLE—2/19/43

HEYWOOD Class—APA 6-9, ex-Baltimore Mail "City" type

▼ HEYWOOD

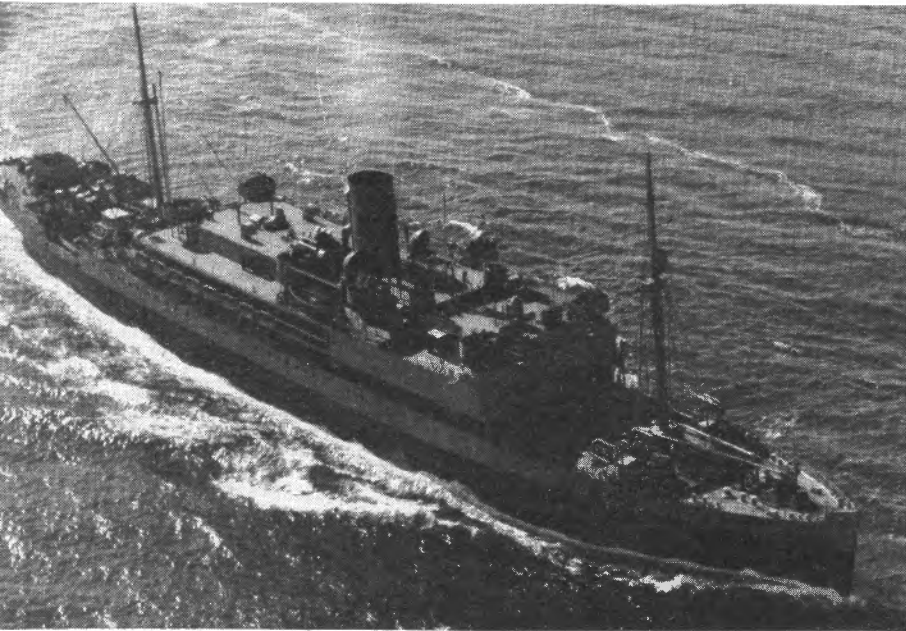


PASSENGER—MISCELLANY—AF • AS • AH

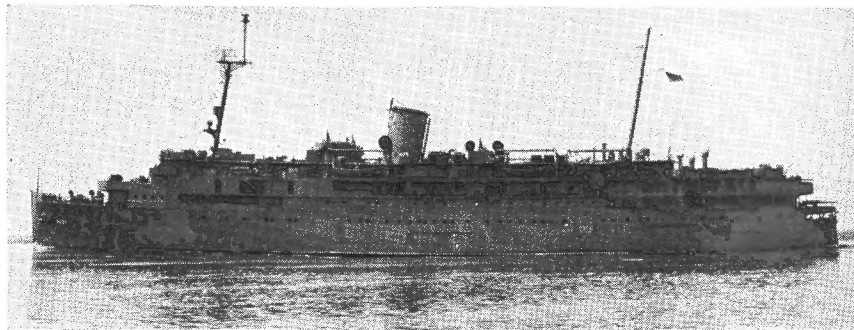
Division of Naval Intelligence—Identification and Characteristics Section

MIZAR Class—AF 12, 13, 15, 17, 21, 22. Formerly United Fruit ships ▼ MERAK—6/23/43

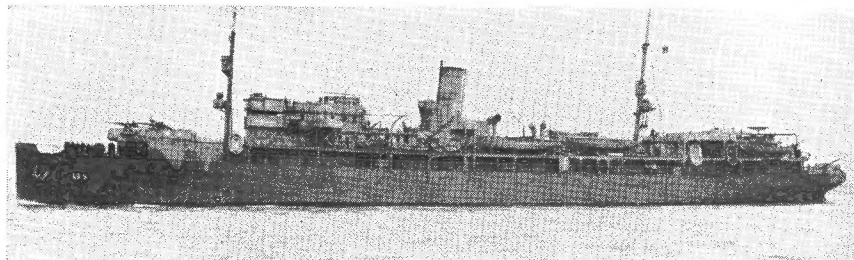
▼ ANTEAUS—AS 21—6/25/43 Sister ships include
SOLACE—AH 5, and 2 others under Army control



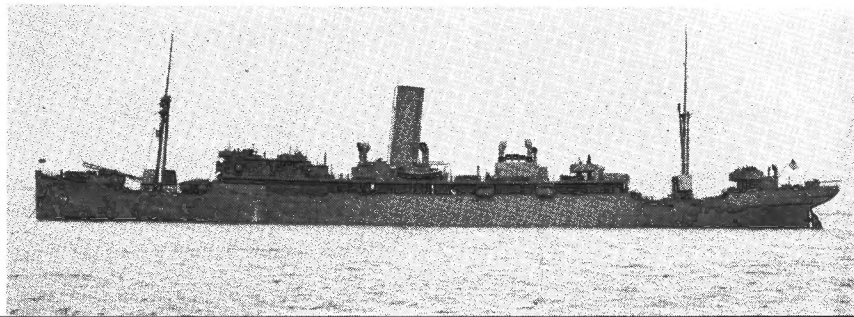
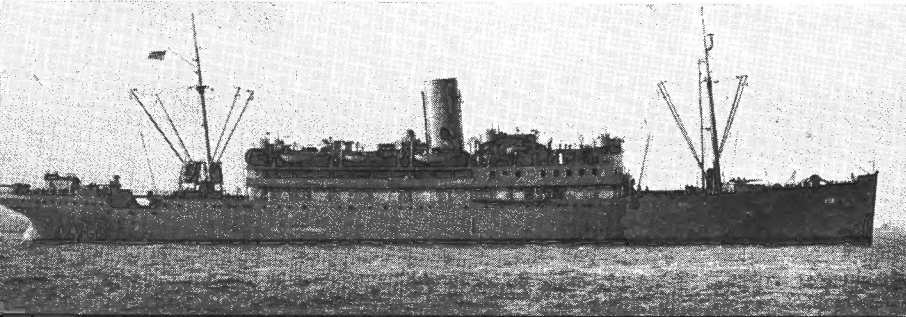
▼ TALAMANCA—6/30/42



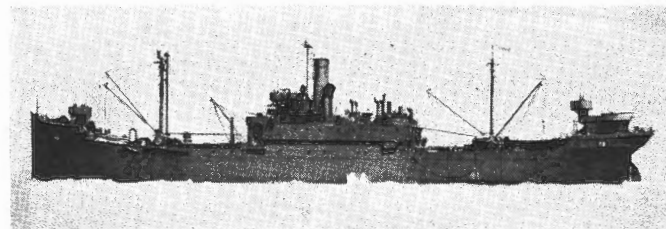
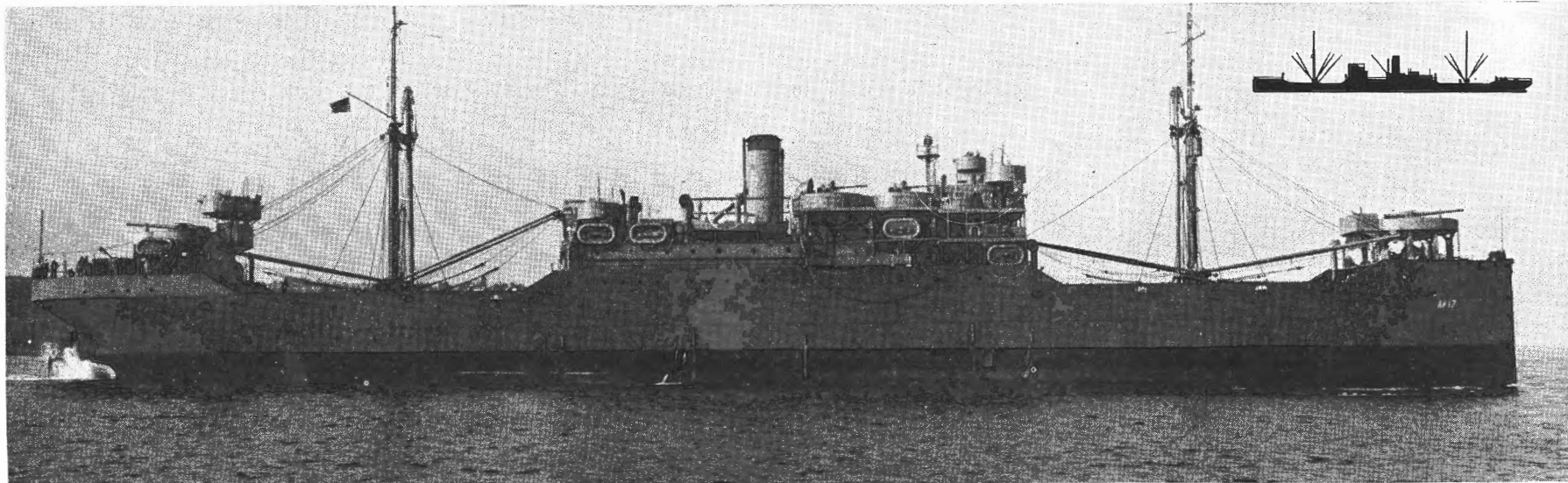
▼ BEAVER—AS 5—4/7/42



▼ PASTORES Class—AF 16, 18, OCTANS similar with another passenger deck



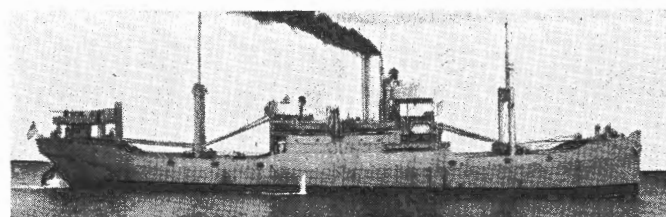
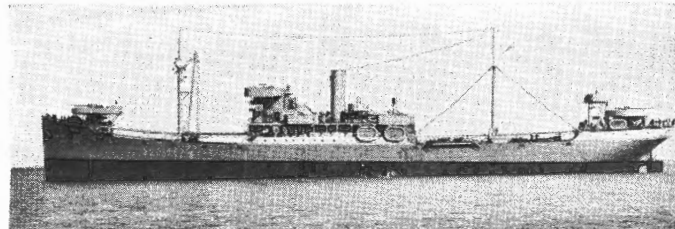
CAPELLA Class—AK 13, 15-17, AKS 3, AG 12, USSB "HOG ISLAND"ers. ▼ VEGA-9/8/42



Silhouette shows original appearance retained by merchant sister ships

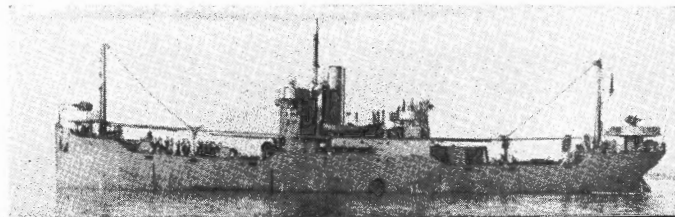
◀ ARCTIC Class—AF 7-9-6/6/43

REGULUS—AK 14-3/20/42 ▶



◀ ARIES—AK 51-5/26/42

GEMINI Class—AP 75, AG 36, 39, 40,
USSB "Lake" type GEMINI ▶
10/21/42

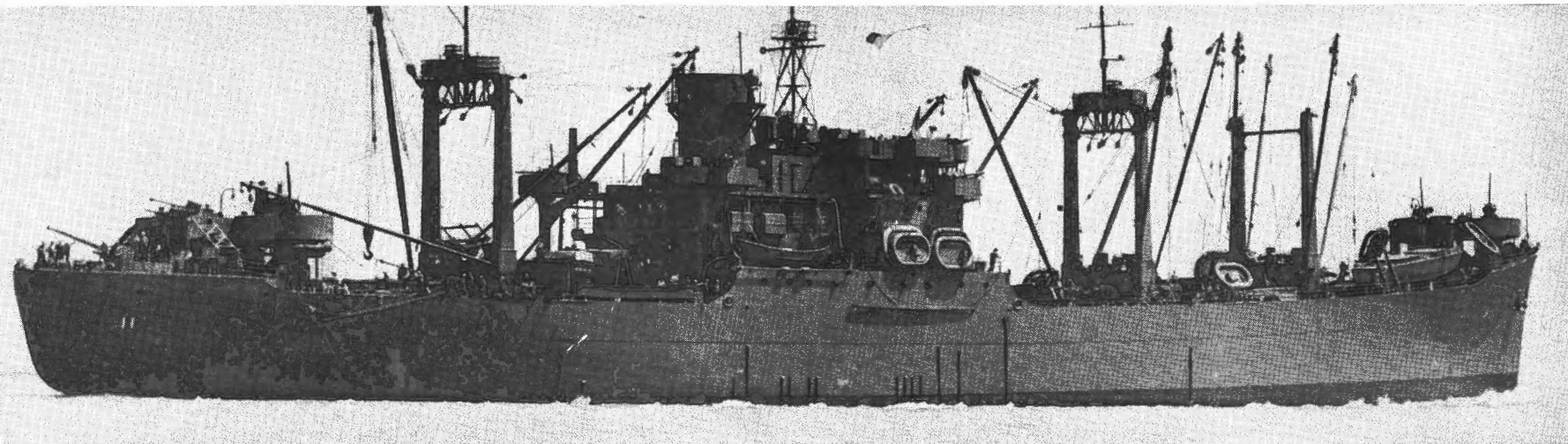


CARGO—C-2 CONVERSIONS—AE • AK • AKA • AKS • AF • AP

Division of Naval Intelligence—Identification and Characteristics Section

ARCTURUS Class—AKA 1, 6-8, 11, AF 11

▼ BETELGEUSE-4/10/43



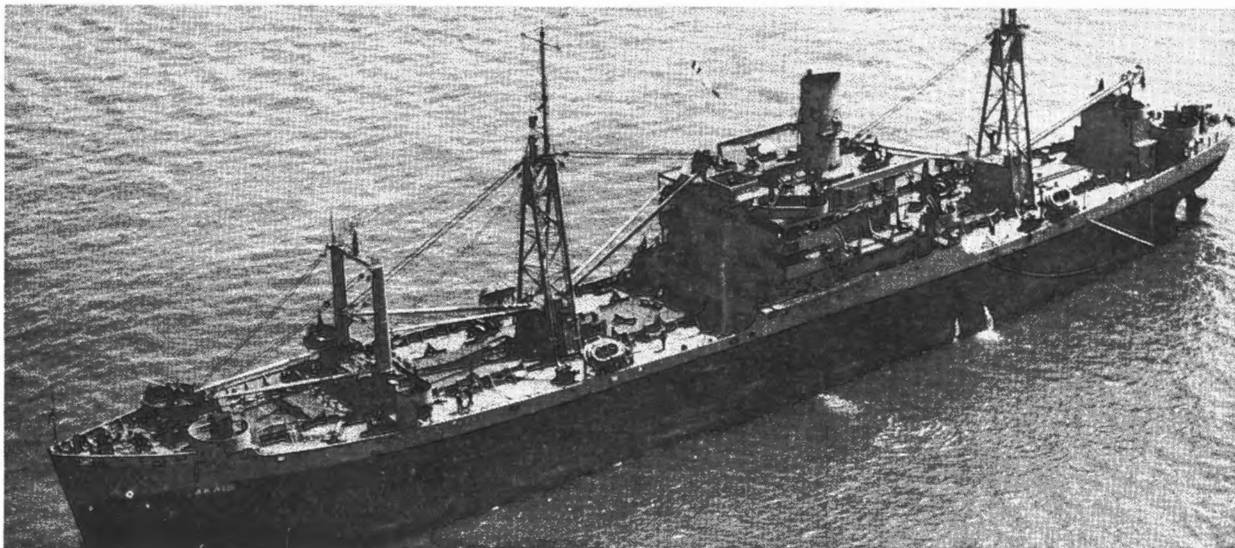
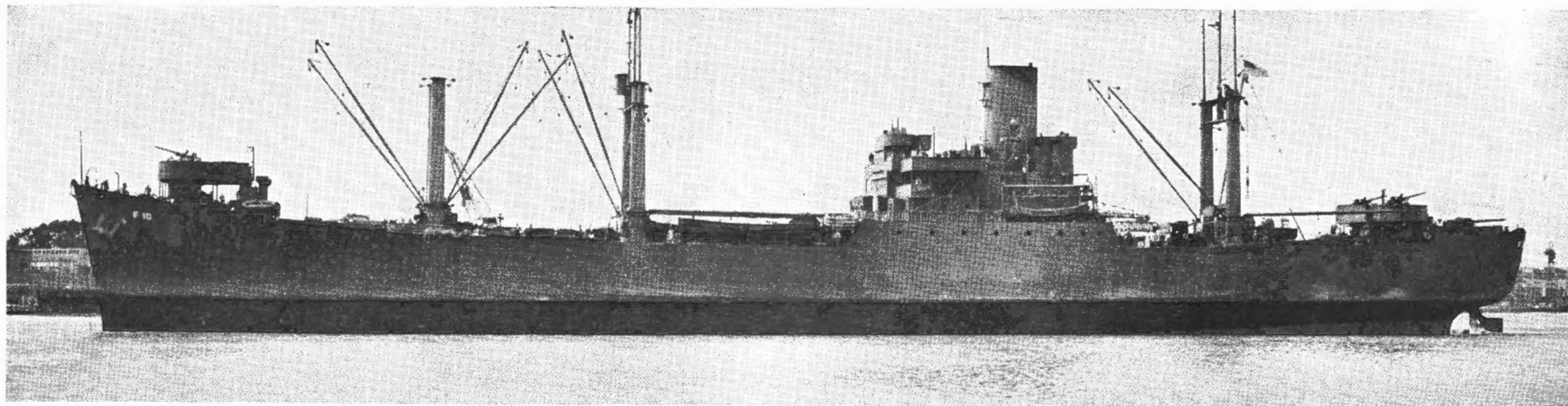
C2-Cargo type. Original appearance, typical of merchant sister ships, is silhouetted.

▼ ALCYONE-5/15/43



MERCURY Class—AK 42, 43, AKS 1, AF 10

C2—Cargo type ▼ ALDEBARAN—9/28/42



APPALACHIAN Class—AGC 1-3
C-2 SB 1 Conversion



◀ ANDROMEDA Class—AKA 15-20
ANDROMEDA—4/18/43 C2—SB1 type



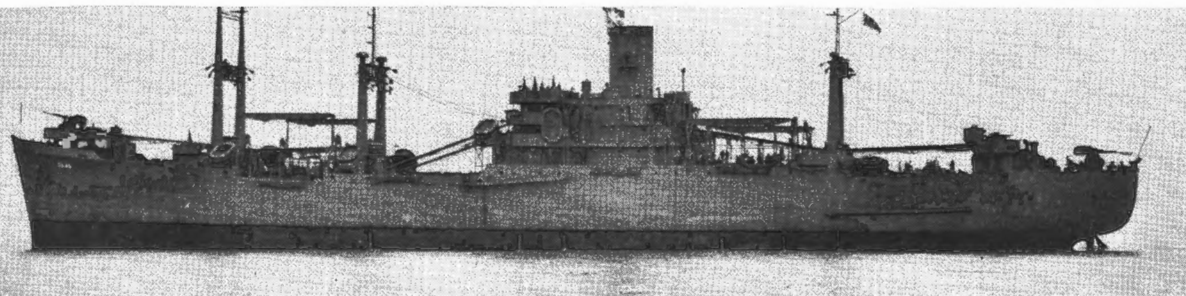
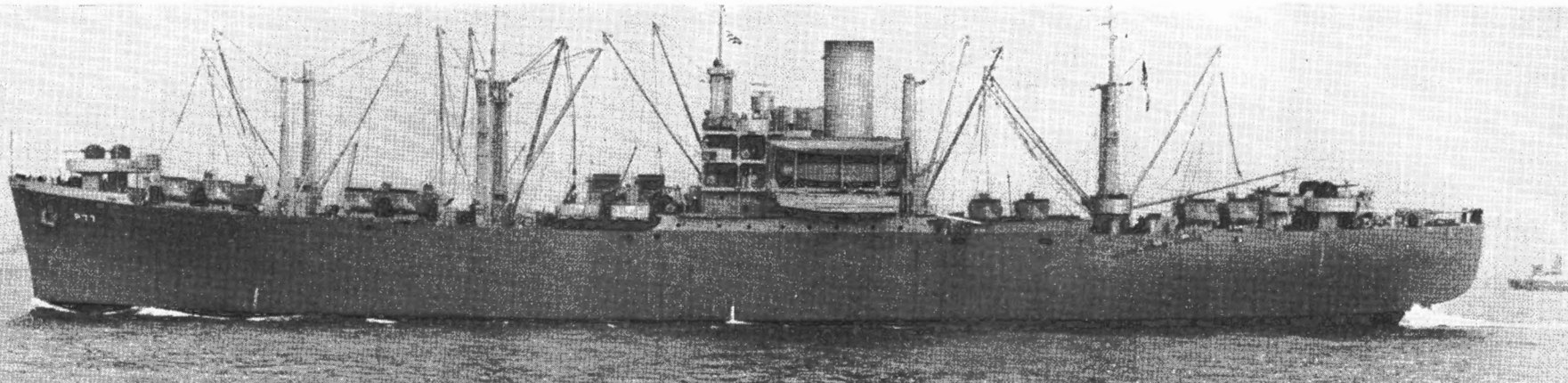
Silhouette illustrates the original design of these conversions—still indicative of merchant sister ships. Compare with another type shown on page 18.

CARGO—C-2 CONVERSIONS—AP • APA • AKA • AKS • AE

Division of Naval Intelligence—Identification and characteristics Section

ORMSBY Class—AP 77, APA 49-51, AKS 4

C2F—Cargo type



▲ THURSTON-9/23/42

◀ ORMSBY-7/18/43



Original design of ships shown on this and page 21 is silhouetted above.

◀ POLLUX-6/19/43

ONI 54-A • RESTRICTED

5-9/5/43

CARGO—C-2 CONVERSIONS

PROCYON-LASSEN Class—AKA 2-4, 12-14, AE 3-9

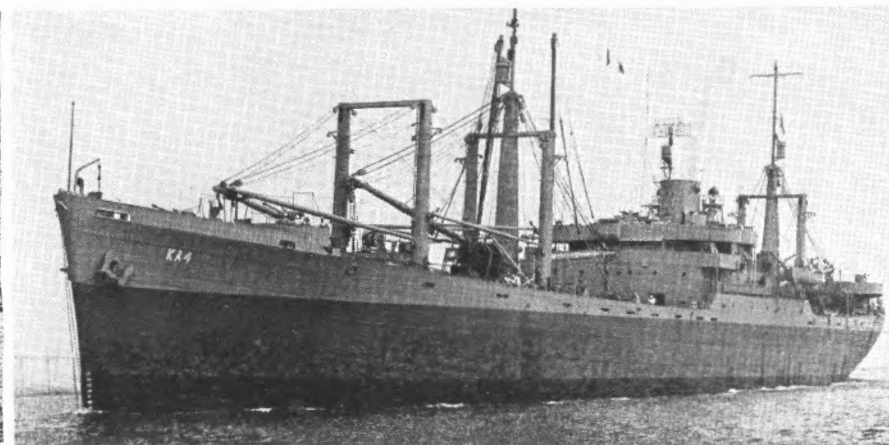
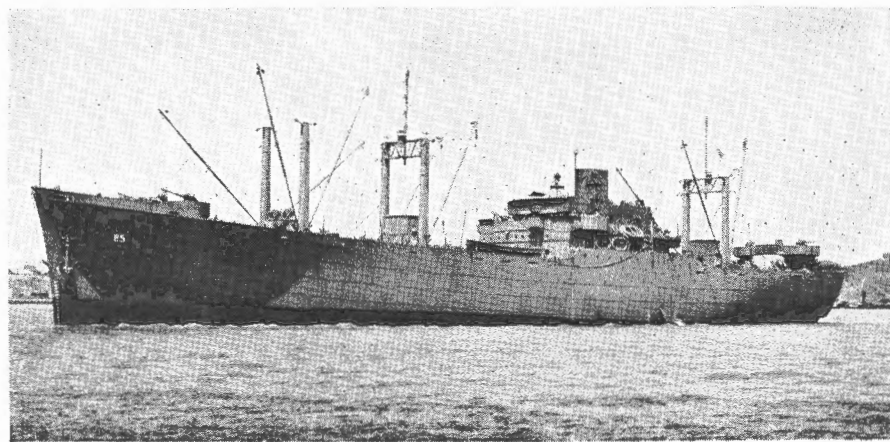
C2F—Cargo

▼ PROCYON-5/10/43



▼ RAINIER-6/20/43

▼ ELECTRA-7/3/43

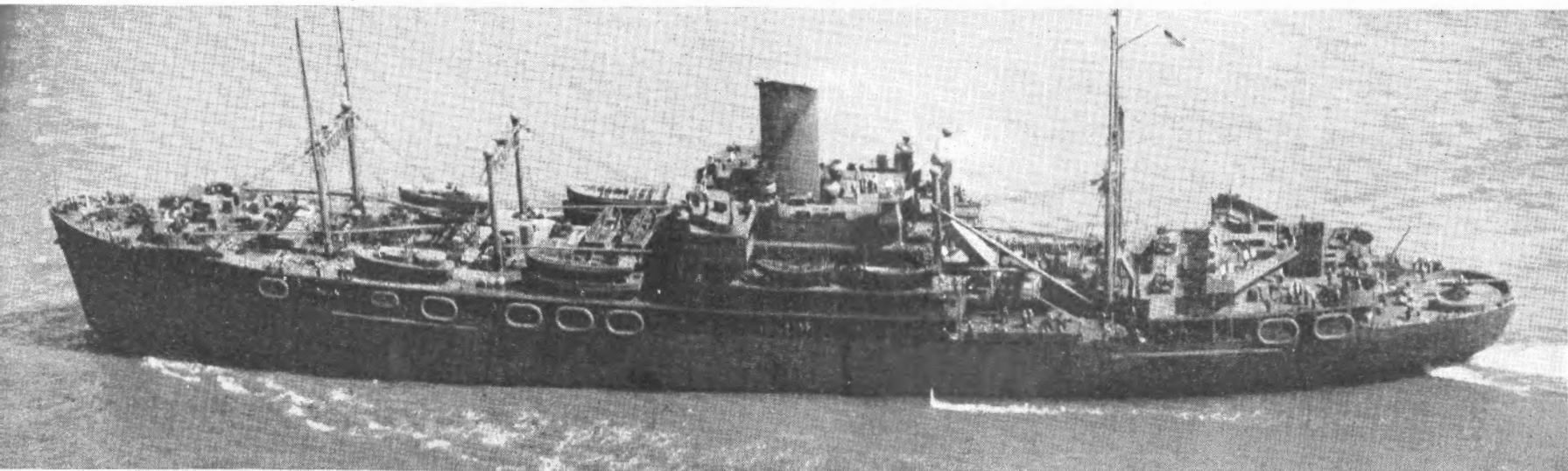


CARGO—C-3 CONVERSIONS—AD • AP • AR • AS • AV

HAMUL Class—AD 20, 21 ▼ MARKAB-10/7/42

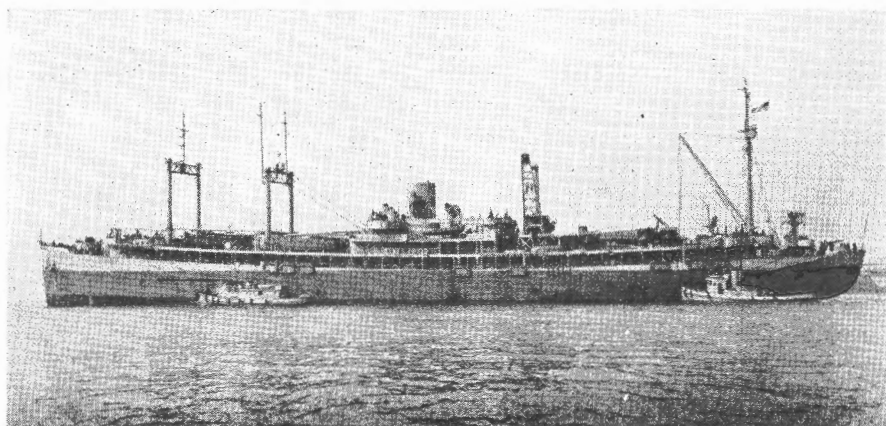
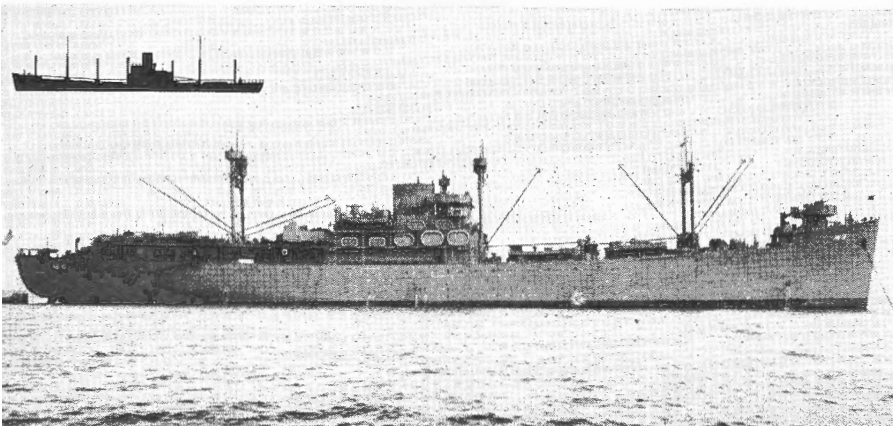
Division of Naval Intelligence—Identification and Characteristics Section

Compare these ships (all C-3) with merchant sister ships shown silhouetted.



GRIFFIN Class—AS 13, 14 ▼ GRIFFIN-4/22/43

▼ DELTA Class—AR 9, 12-3/2/43



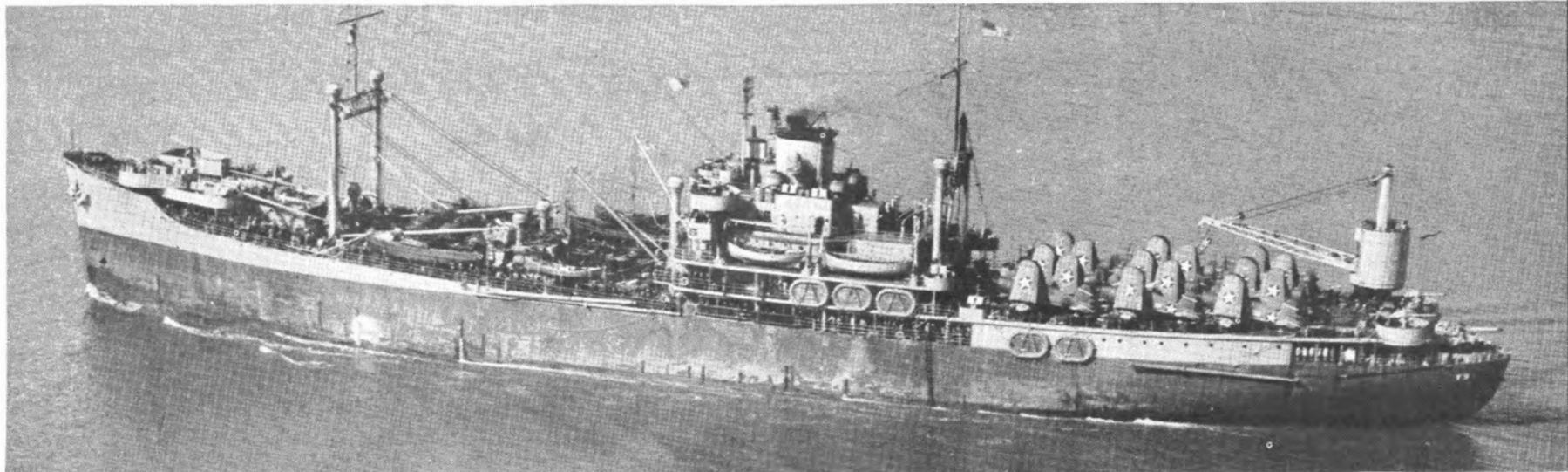
ONI 54-A • RESTRICTED

9/5/43

POCOMOKE Class—AV 9, 10

▼ POCOMOKE-2/3/43

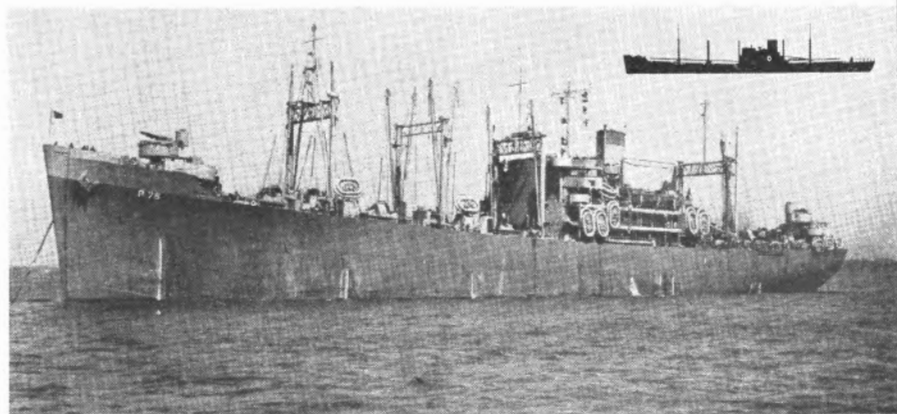
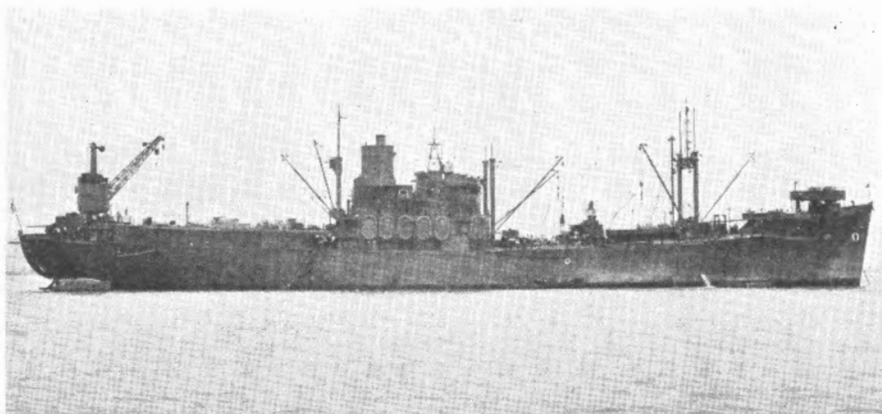
CARGO—C-3 CONVERSIONS

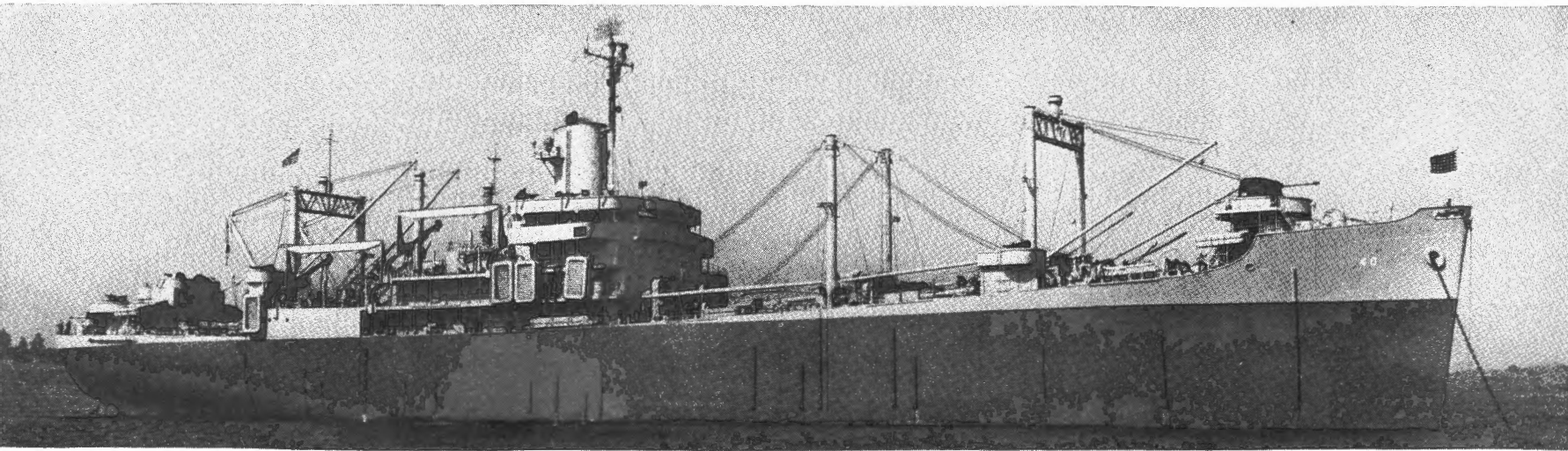


▼ TANGIER—AV 8 9/2/42

STANTON Class—AP 69-71, 76

▼ ARUNDEL-5/1/43



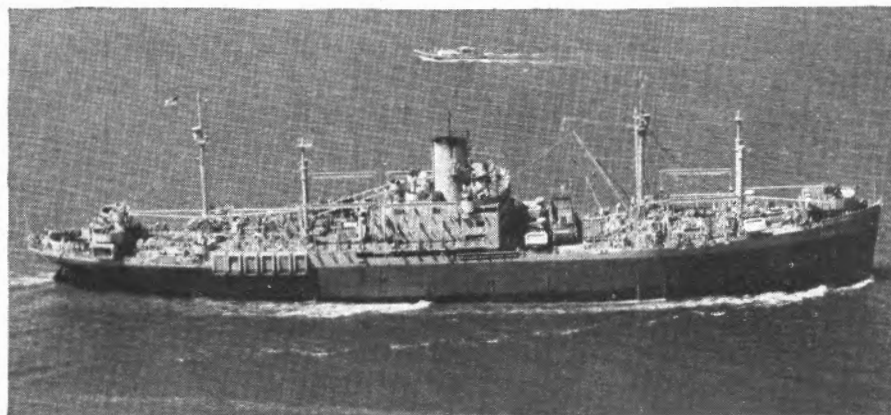
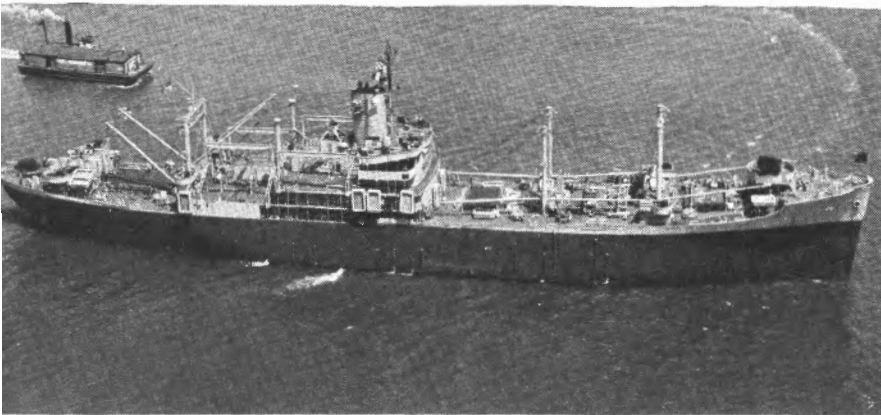


◆ BAYFIELD Class—APA 33-48

▼▲ CUSTER—7/24/43

SUMTER Class—APA 52-56

C3-SA3 type ▼ WINDSOR—6/27/43



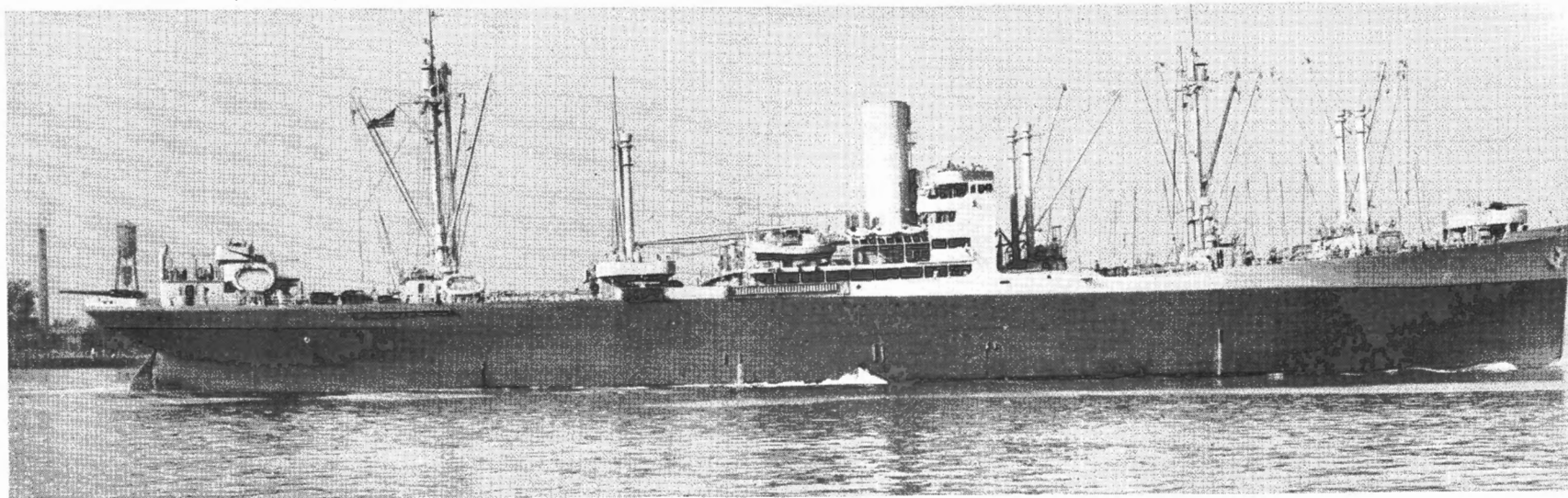
ONI 54-A • RESTRICTED

9/5/43

CARGO—MISCELLANEOUS M. C. TYPES

HERCULES Class AK 41, AKA 10, AP 67 C3E Cargo type

▼ ALMAACK-9/17/42



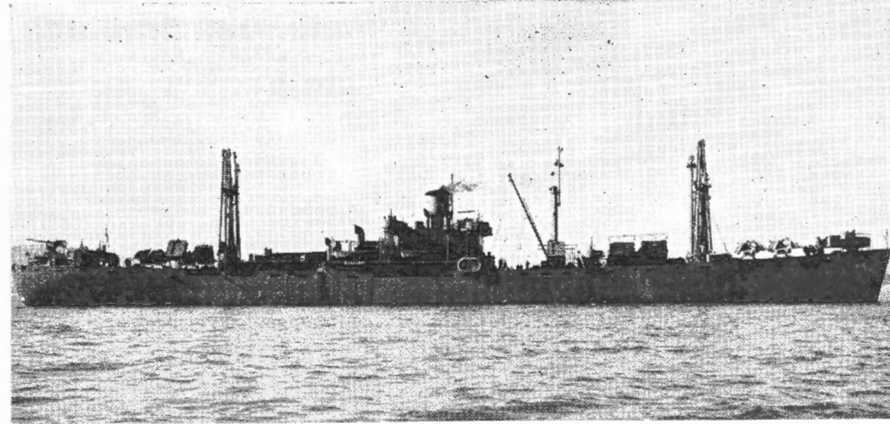
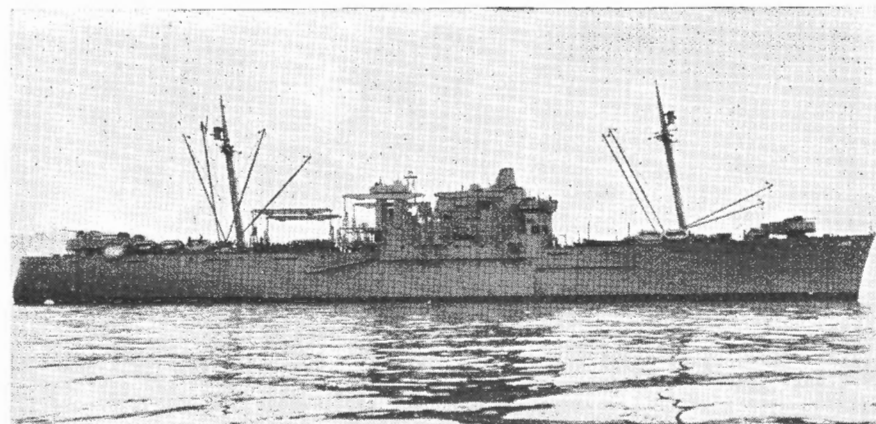
TRYON Class—APH 1-3 C2-S1-A1 type

▼ PINKNEY-1/1/43

CRATER Class—AK 70-79, 90-97, 99-108

EC2-SC1 or "Liberty" type

▼ ALUDRA-1/6/43

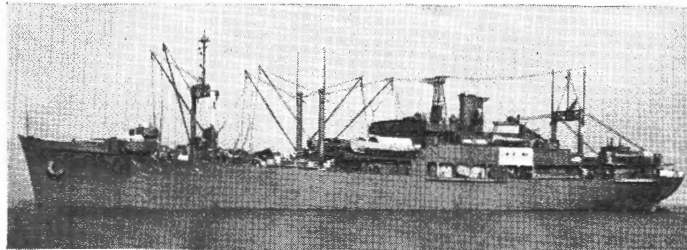
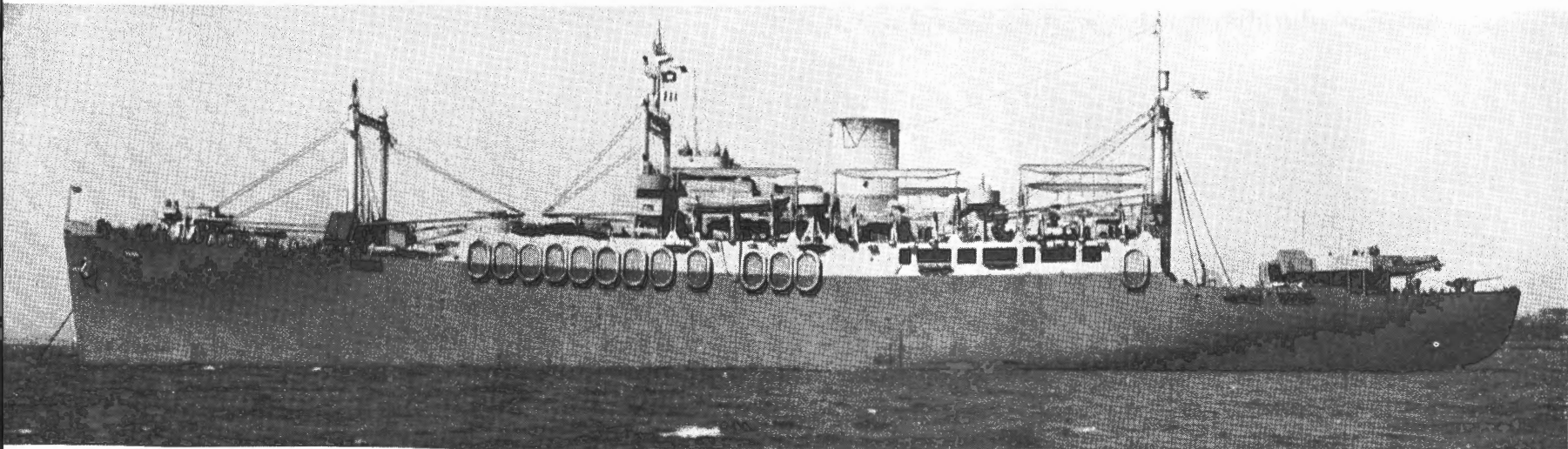


CARGO—MISCELLANEOUS M. C. TYPES—AE • AK • AKA • AS

Division of Naval Intelligence—Identification and Characteristics Section

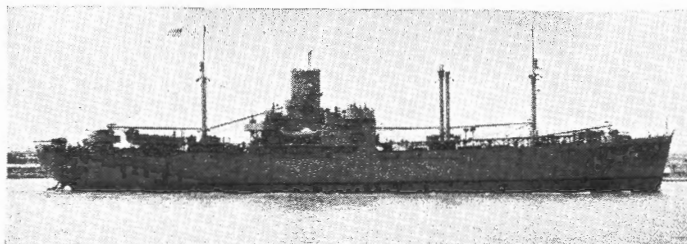
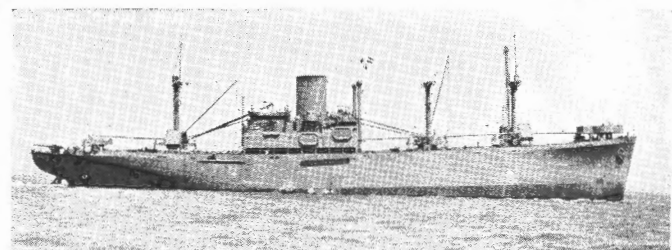
FUNSTON Class—APA 89, 90 C3-S1-A3 type

▼ J. O'HARA-5/1/43



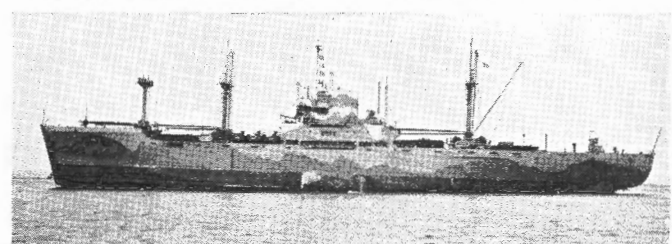
◀ OTUS—AS 20—1/15/43 C1B type

AURIGA—AK 98—4/1/43 C1B type ▶



◀ SANGAY Class—AE 10, AKA 5 C1A Cargo

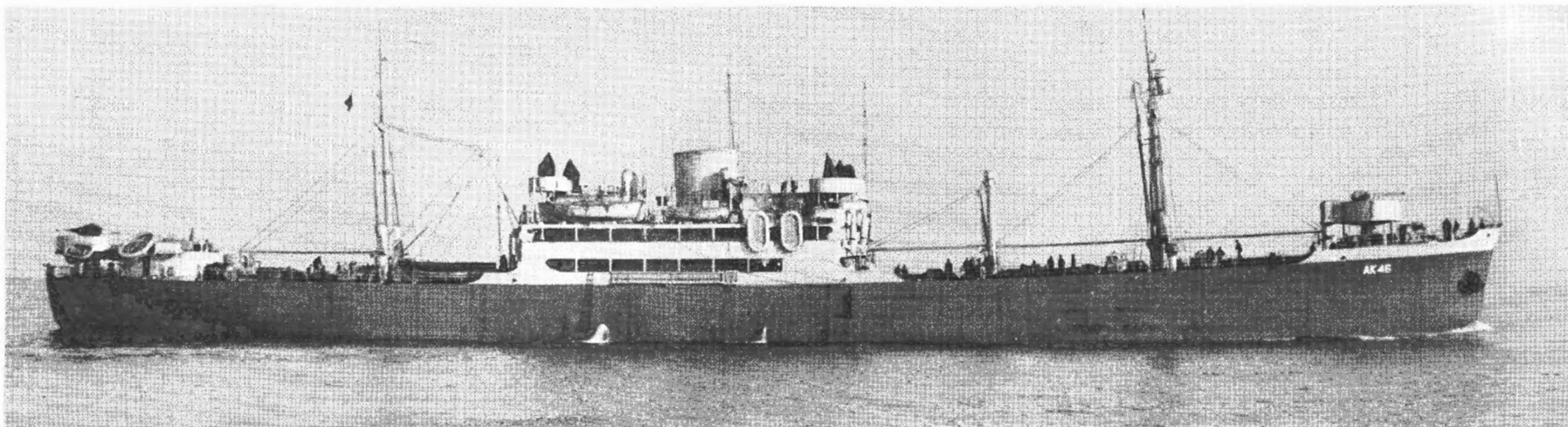
ALHENA—AKA 9 C-2 Cargo ▶



ONI 54-A • RESTRICTED

CARGO—MISCELLANEOUS—AK • AF

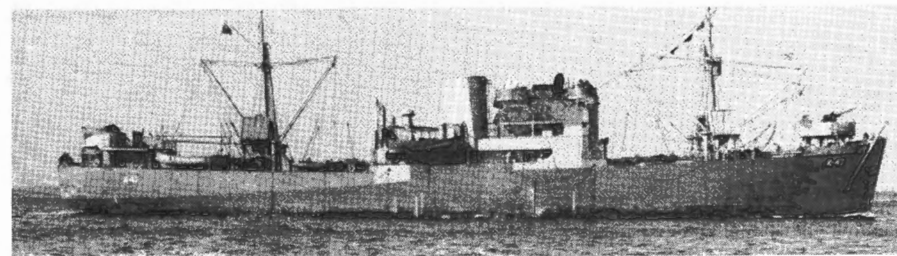
▼ PLEIADES—AK 46—3/18/43



▲ ROAMER—AF 19



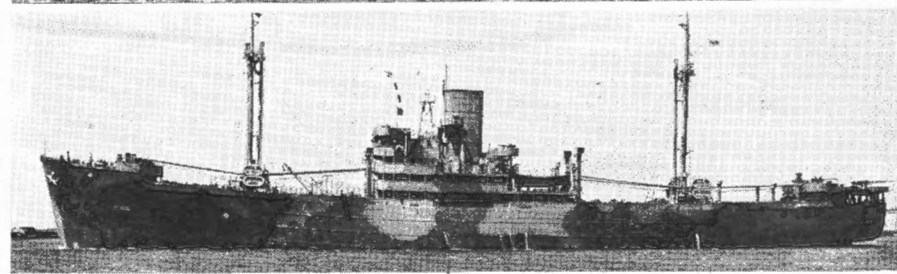
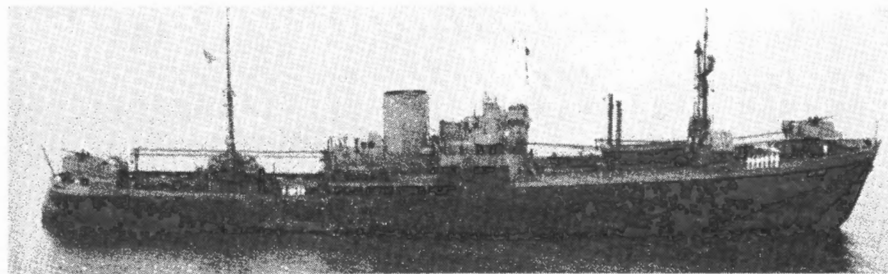
▲ PEGASUS—AK 48



ACQUILA—AK 47—8/4/42 ▶

▼ PONTIAC—AF 20—6/9/42

SATURN—AK 49—8/5/42 ▲

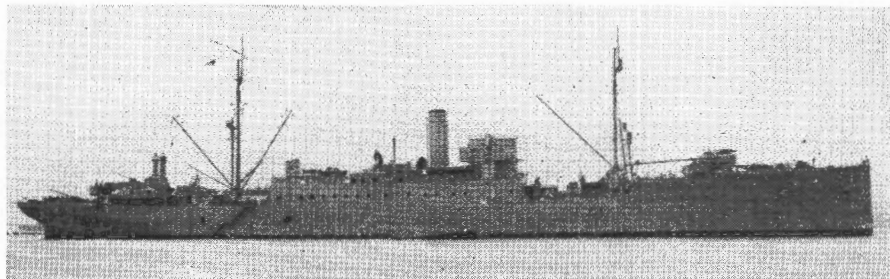


CARGO—MISCELLANEOUS OLD TYPES—AD • AF • AK • AR

Division of Naval Intelligence—Identification and Characteristics Section

ALTAIR Class—AD 11, 12, AR 11 ▼ DENEbola—3/11/43 COMPOSITE SUPERSTRUCTURE

PROMETHEUS Class—AR 3, 4 ▼ VESTAL

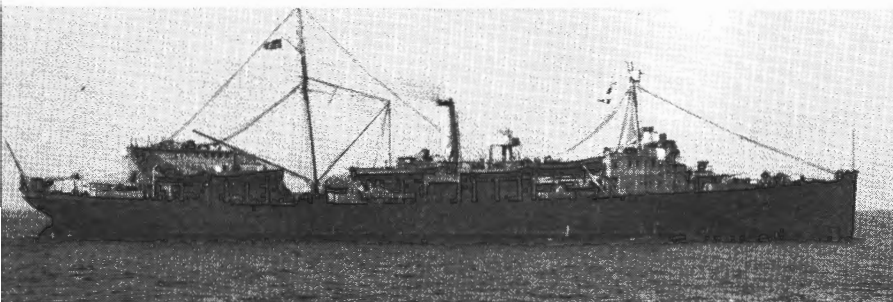


▼ MELVILLE—AD 2-12/28/43

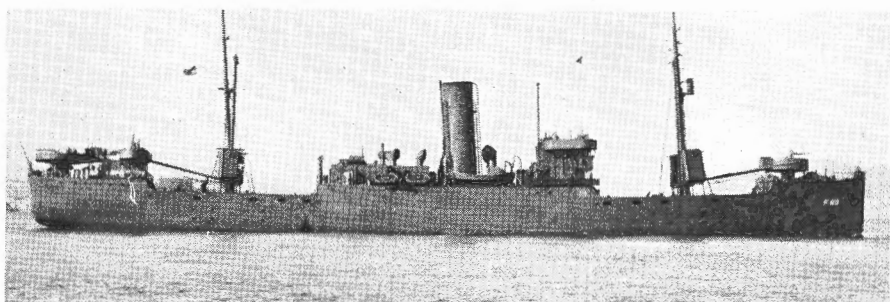
SPLIT SUPERSTRUCTURE

CYGNUS Class—AF 23, 25

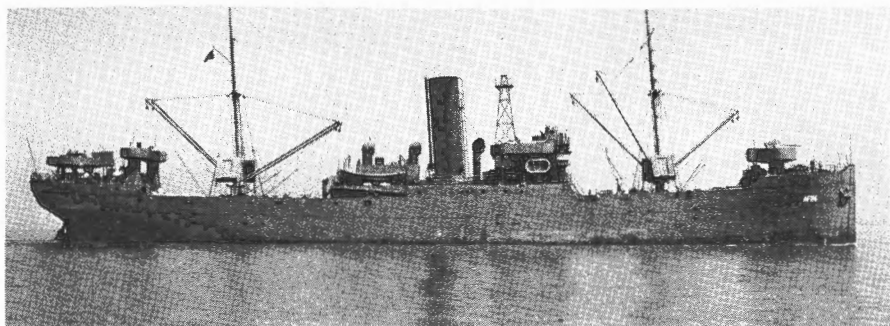
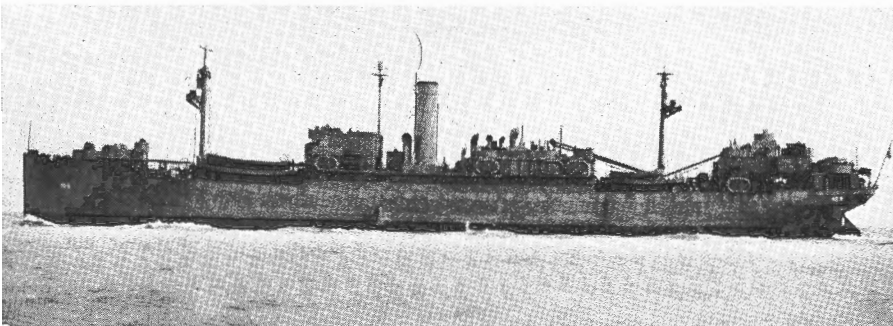
▼ TAURUS—11/30/42



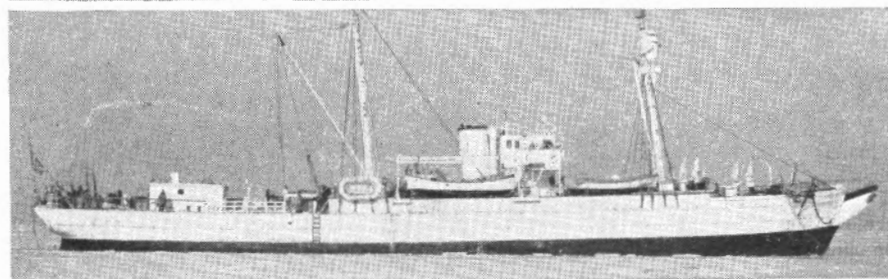
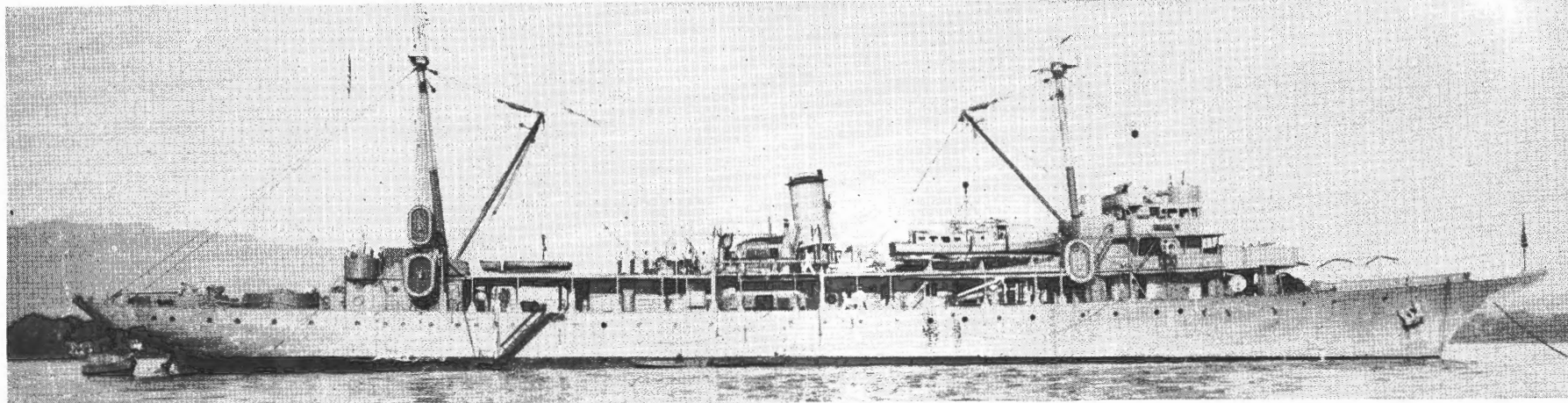
▼ BLACK HAWK—AD 9



▼ DELPHINIUS—AF 24-9/6/42



▼ SUMNER—AG 32



◀ BEAR—AG 29-3/16/43



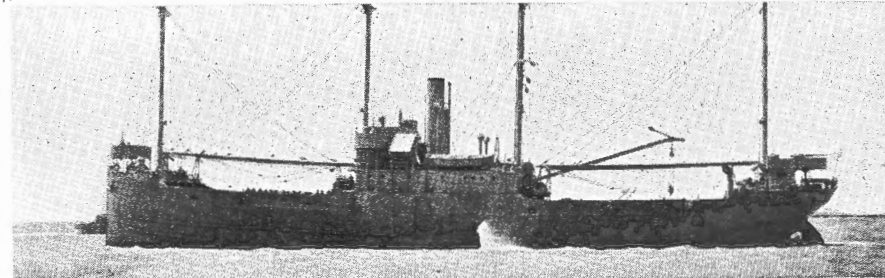
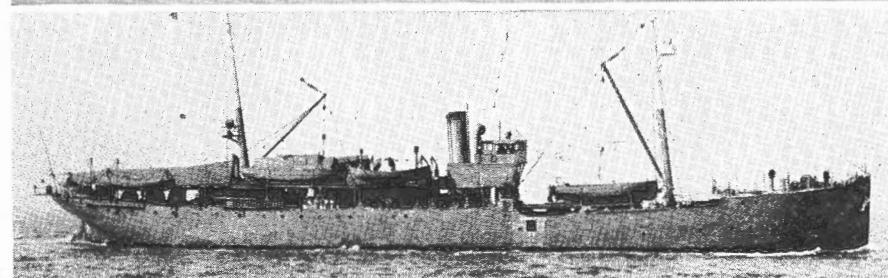
▲ URANUS (Preconversion)—AF 14

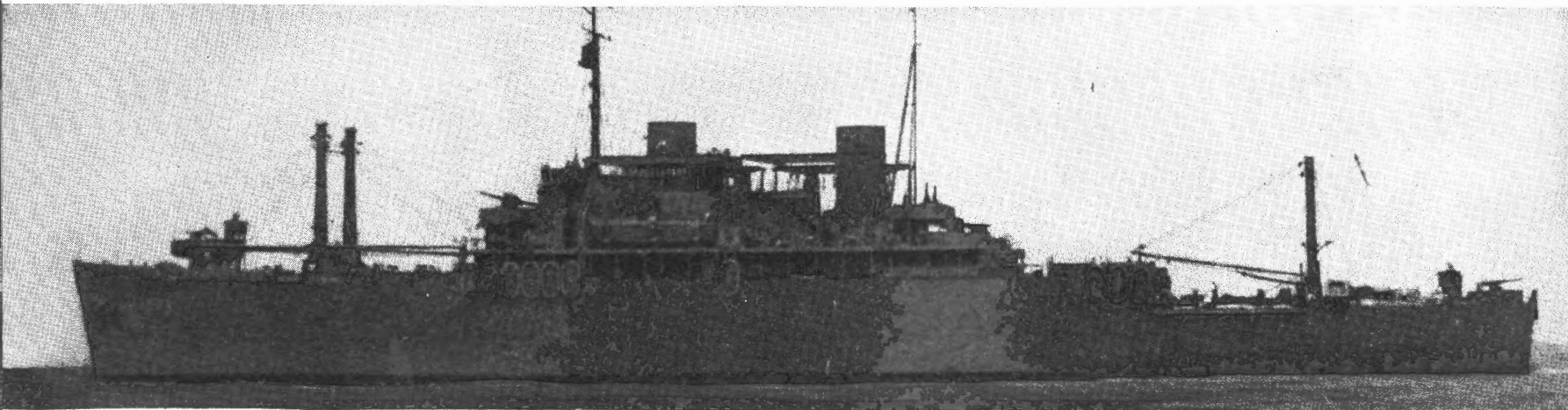
CAMANGA Class—AG
42, 45, 46-48, 66

MAJABA similar

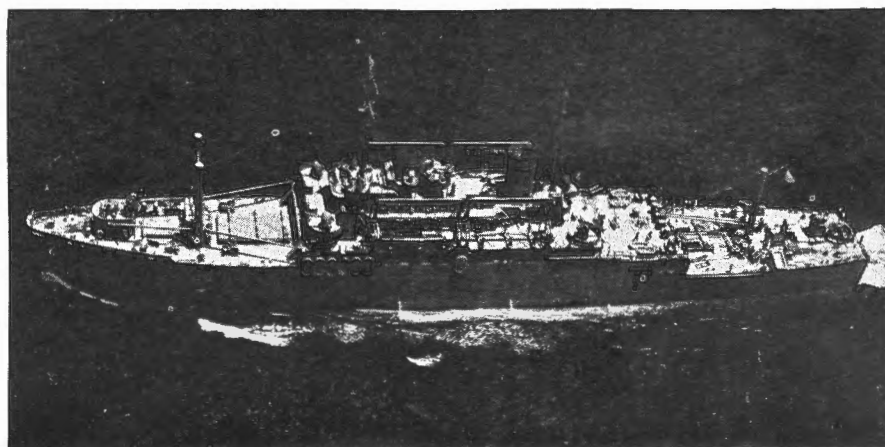
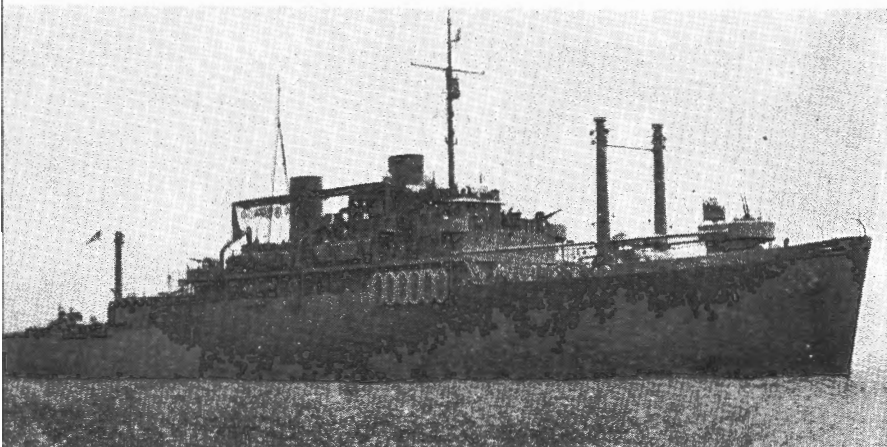
▶ HANNIBAL—AG 1

▼ TAGANAK-7/26/42





DOYEN Class—APA 1, 11—all photos DOYEN-6/7/43



ONI 54-A • RESTRICTED

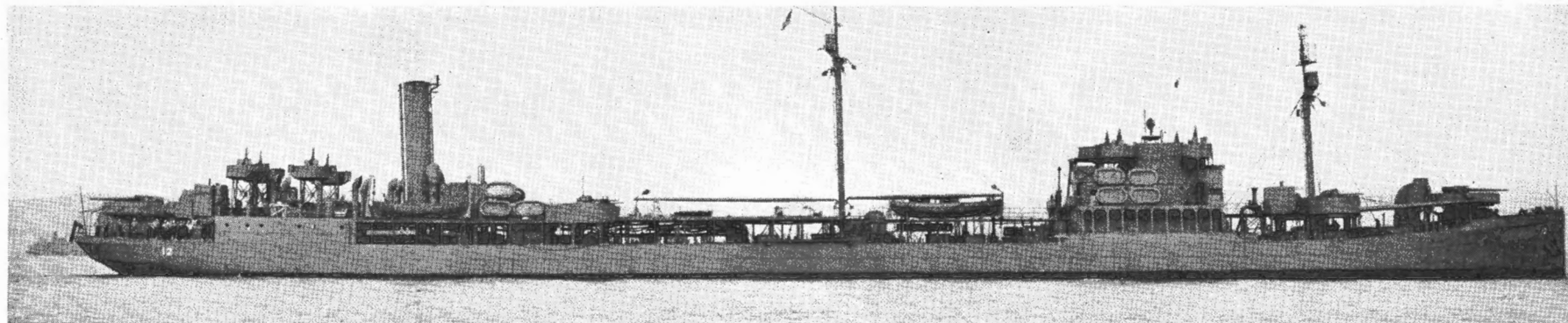
9/5/43

TANKERS—WORLD WAR I TYPES

PATOKA Class—AO 9, 11-13, 18-21 "Flush-deckers"

▼ RAMAPO—4/17/43

The first Train oilers built to Navy specifications, 1913-20

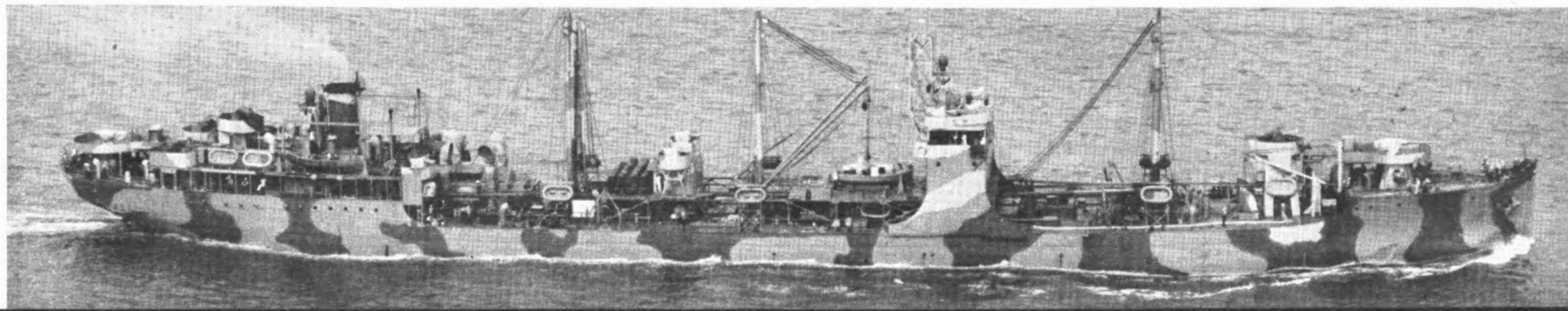


KANAWHA Class—AO 3-6 (Amidships superstructure varies)

KAWEAH Class—AO 15, 16 ▼ LARAMIE—2/21/43



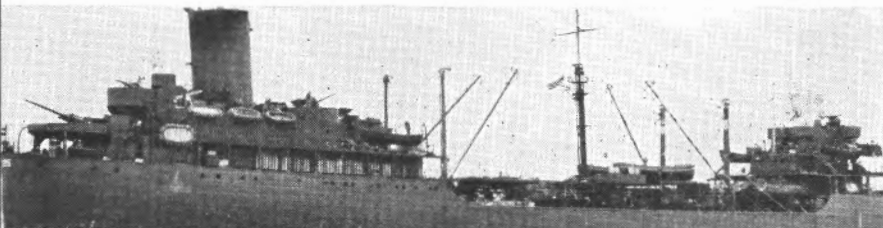
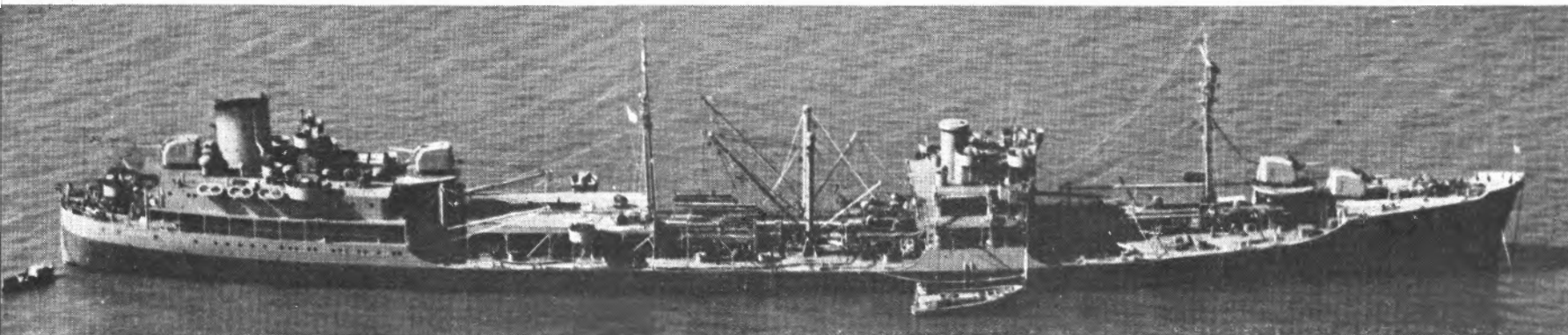
▼ MAUMEE—AO 2-7/22/42



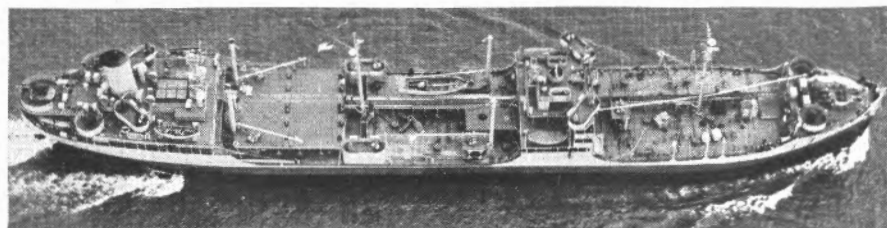
TANKERS—NAVY—MARITIME COMMISSION TYPES

Division of Naval Intelligence—Identification and Characteristics Section

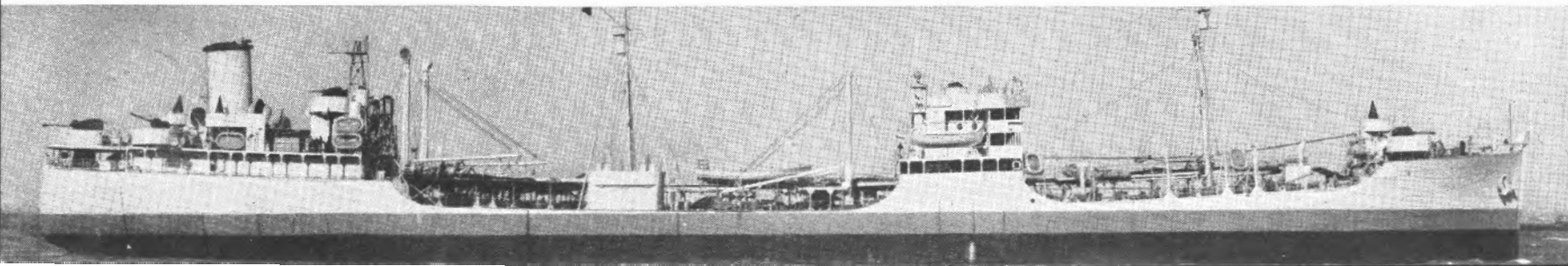
CIMARRON Class—AO 22-32 Improved CIMARRON Class, AO 51—similar Note armament, king post variations ▼ SALAMONIE—10/18/42



▲ SABINE AO 25-7/28/42



KENNEBEC Class—AO 36-40, 48, 69-72 Maritime Commission T2 type ▼▲ NIOBRARA-4/14/43

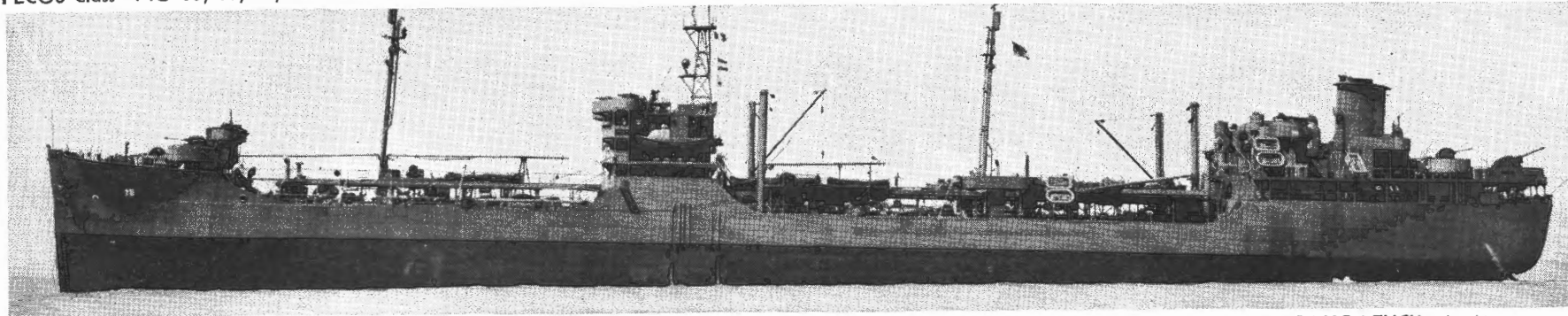


ONI 54-A • RESTRICTED

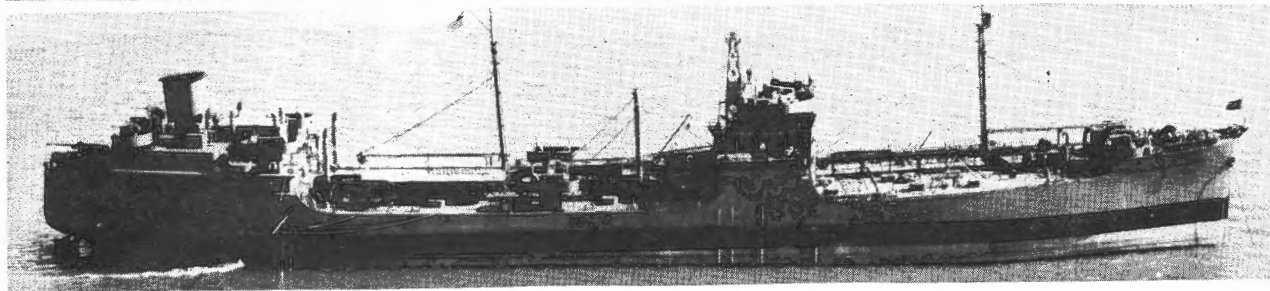
9/5/43

TANKERS—NAVY—MARITIME COMMISSION TYPES

PECOS Class—AO 65, 67, 68, 73—Maritime Commission T2—SE—A1 type ▼



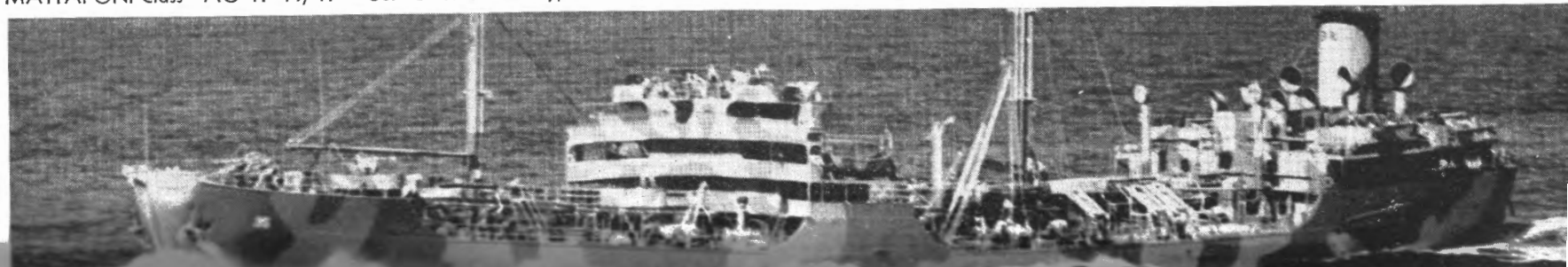
▲ SAUGATUCK—6/21/43



MATTAPONI Class—AO 41-44, 47 USMC "TANKER" type ▲ MONONGAHELA—9/24/42

CHICOPEE Class—AO 34, 35

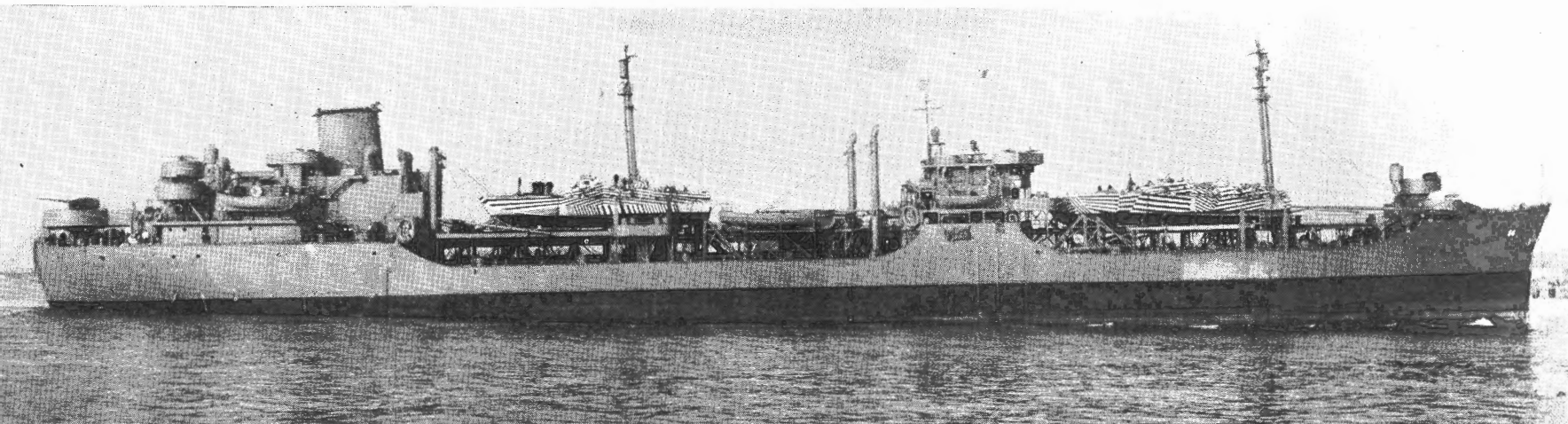
▼ HOUSATONIC 10/21/42



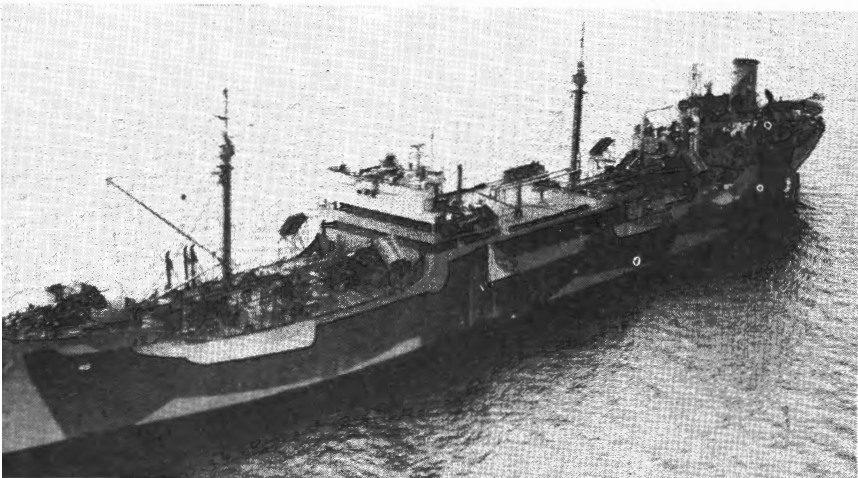
MISCELLANEOUS TANKERS

Division of Naval Intelligence—Identification and Characteristics Section

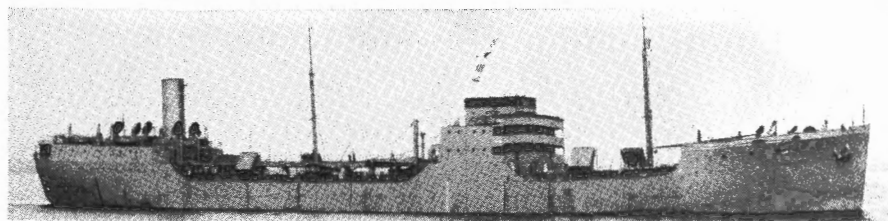
▼ ATACOSTA—AO 66-3/14/43



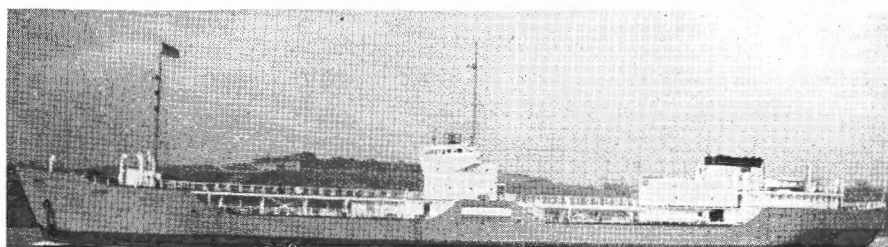
SUAMICO Class—AO 49, 50 ▼ SUAMICO



▼ VICTORIA—AO 46 (below)



▼ BIG HORN—AO 45 4/22/42



ONI 54-A • RESTRICTED

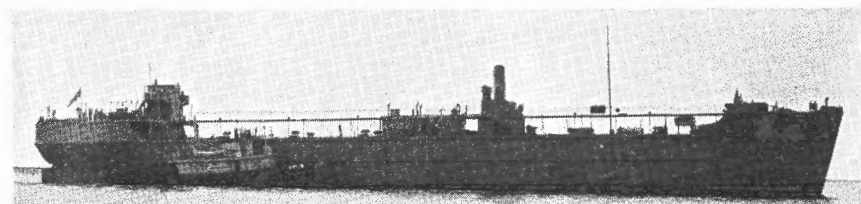
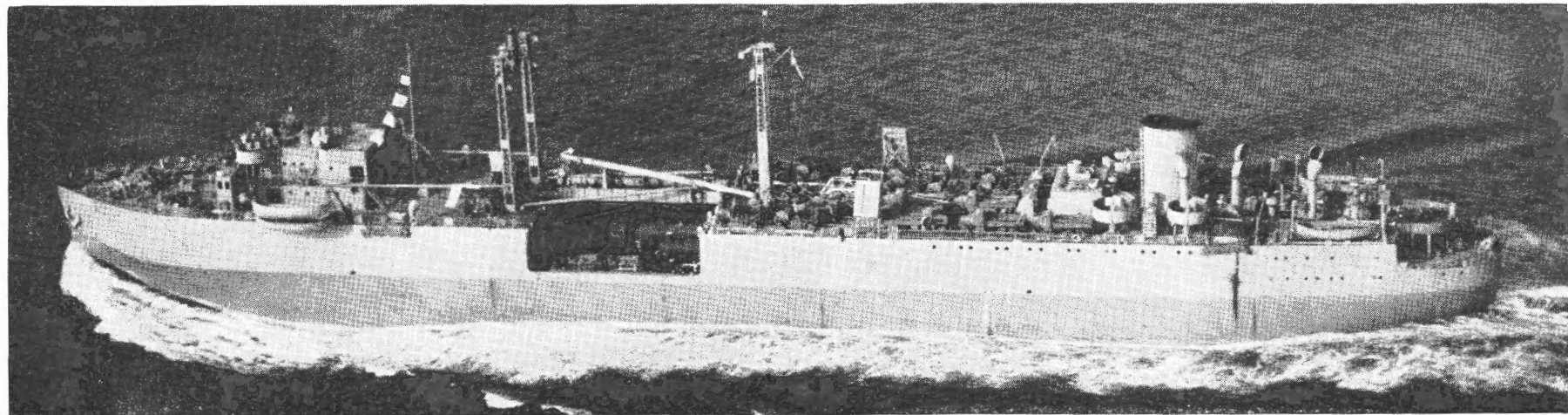
9/5/43

APM • AKA • AKV • AG • YO • YOG

MISCELLANEOUS "ENGINES—AFT"

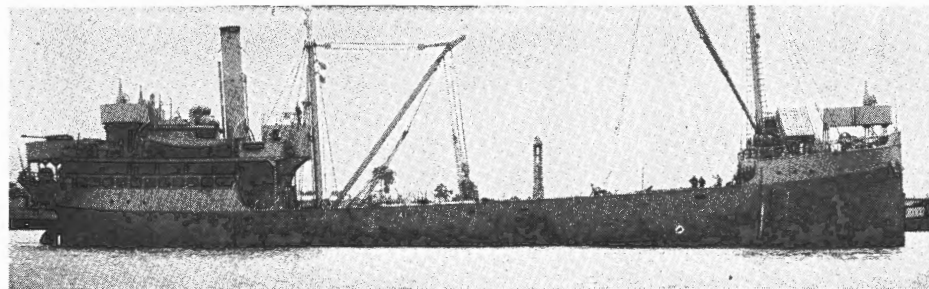
▼ LAKEHURST—APM 9

KITTY HAWK, HAMMONDSPORT—AKV 1, 2 similar

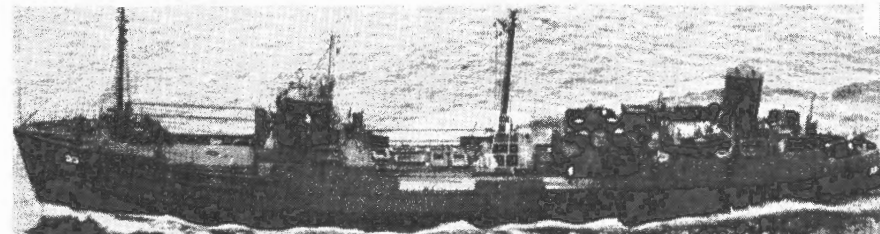


▼ KAULA—AG 33-4/21/43

▲ YO, YOG—Concrete Type



▲ MALANAO—AG 44-7/28/42

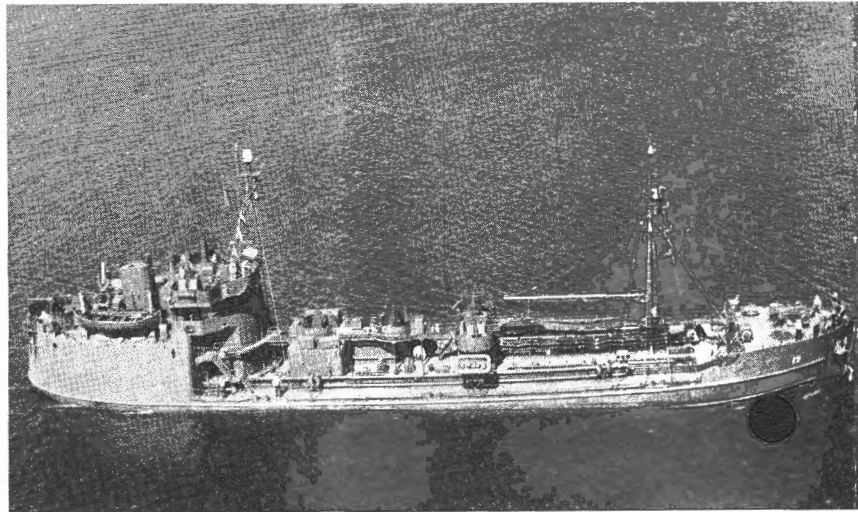
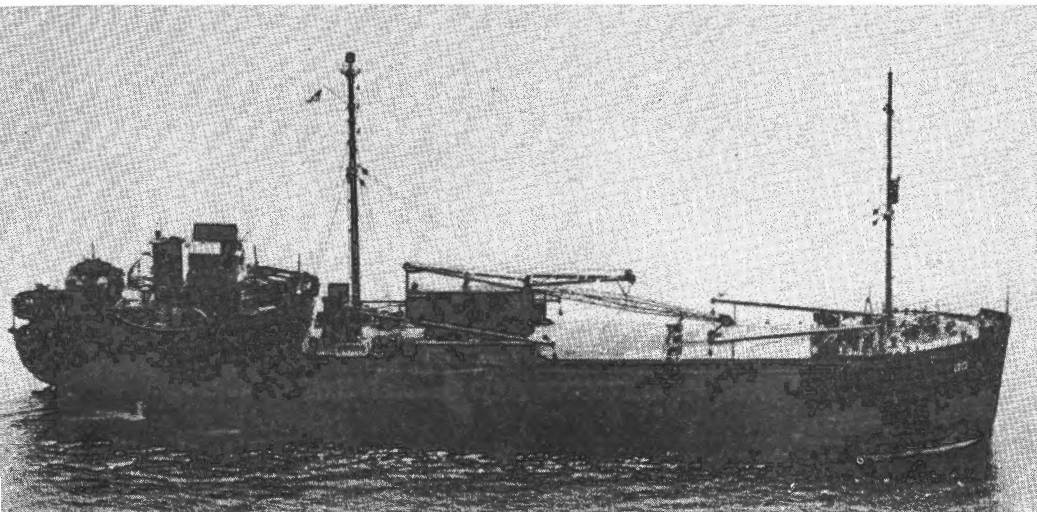


AKA 21—Class—Adapted from
Maritime Commission's C4-SB1



MISCELLANEOUS "ENGINES—AFT" AK • AOG • YO

ENCELADUS Class—AK 80-89 Maritime Commission's new N3-SA1 design ▼ ENCELADUS 8/30/43



MISCELLANEOUS—AOG ▼ WABASH—AOG 4

▼ AROOSTOOK Class—AOG-14-16 ▲ METTAWEE Class—AOG 17-

