

Symphonie n°2 en mi bémol

Violon 2

François-Joseph GOSSEC

Largo

Musical score for "The Rose Tree" by Franz Schubert, Op. 149, No. 3. The score is in G major, 3/4 time, and consists of 81 measures. It features a melody in the right hand and a bass line in the left hand. The melody includes various ornaments, trills, and dynamic markings such as *p* (piano), *f* (forte), *cresc.* (crescendo), and *pizz.* (pizzicato). The bass line includes triplets and a final 8-measure rest. The piece concludes with a "Segue" instruction.

Segue

Allegro molto

Violon 2 part, Allegro molto. The score is written in treble clef, key of E-flat major (three flats), and common time (C). The tempo is marked 'Allegro molto'. The score consists of 44 measures, divided into systems of five measures each. The notation includes various musical symbols such as notes, rests, accidentals, and dynamic markings.

Measures 1-5: The first system begins with a half note G2, followed by a quarter note A2, a quarter note Bb2, and a quarter note C3. The second measure contains a half note D3, a quarter note E3, a quarter note F3, and a quarter note G3. The third measure contains a half note A3, a quarter note B3, a quarter note C4, and a quarter note D4. The fourth measure contains a half note E4, a quarter note F4, a quarter note G4, and a quarter note A4. The fifth measure contains a half note B4, a quarter note C5, a quarter note B4, and a quarter note A4.

Measures 6-10: The second system begins with a half note G3, a quarter note A3, a quarter note Bb3, and a quarter note C4. The second measure contains a half note D4, a quarter note E4, a quarter note F4, and a quarter note G4. The third measure contains a half note A4, a quarter note B4, a quarter note C5, and a quarter note D5. The fourth measure contains a half note E5, a quarter note F5, a quarter note G5, and a quarter note A5. The fifth measure contains a half note B5, a quarter note C6, a quarter note B5, and a quarter note A5.

Measures 11-16: The third system begins with a half note G3, a quarter note A3, a quarter note Bb3, and a quarter note C4. The second measure contains a half note D4, a quarter note E4, a quarter note F4, and a quarter note G4. The third measure contains a half note A4, a quarter note B4, a quarter note C5, and a quarter note D5. The fourth measure contains a half note E5, a quarter note F5, a quarter note G5, and a quarter note A5. The fifth measure contains a half note B5, a quarter note C6, a quarter note B5, and a quarter note A5.

Measures 17-22: The fourth system begins with a half note G3, a quarter note A3, a quarter note Bb3, and a quarter note C4. The second measure contains a half note D4, a quarter note E4, a quarter note F4, and a quarter note G4. The third measure contains a half note A4, a quarter note B4, a quarter note C5, and a quarter note D5. The fourth measure contains a half note E5, a quarter note F5, a quarter note G5, and a quarter note A5. The fifth measure contains a half note B5, a quarter note C6, a quarter note B5, and a quarter note A5.

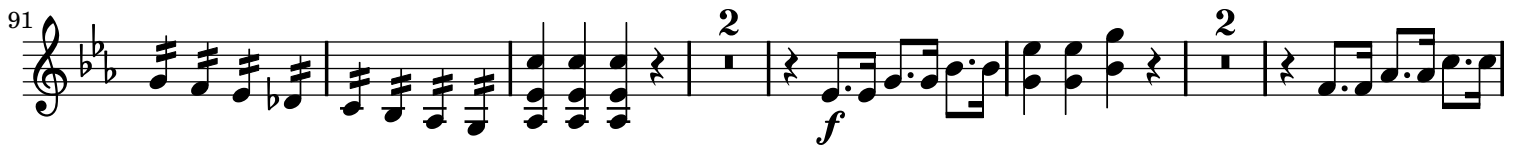
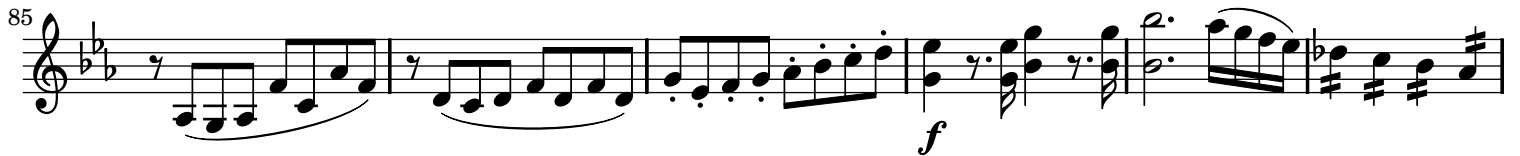
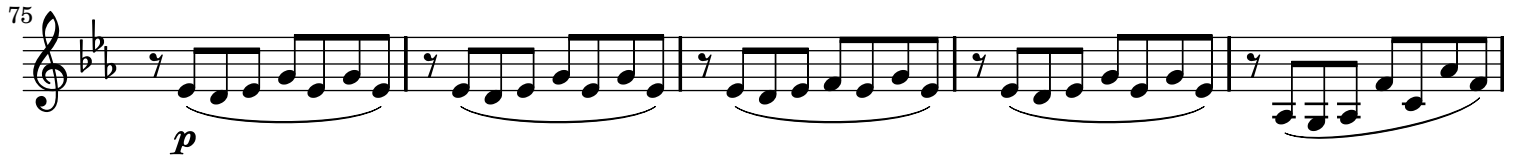
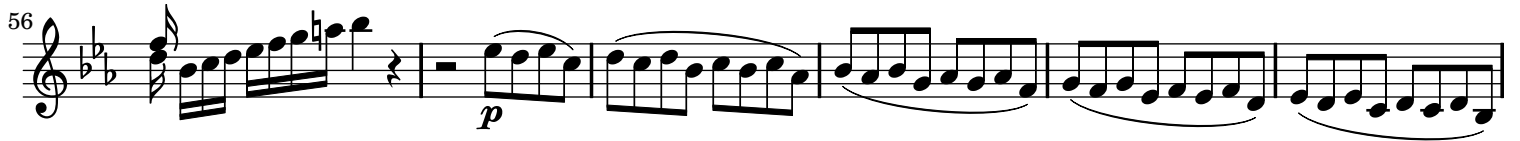
Measures 23-28: The fifth system begins with a half note G3, a quarter note A3, a quarter note Bb3, and a quarter note C4. The second measure contains a half note D4, a quarter note E4, a quarter note F4, and a quarter note G4. The third measure contains a half note A4, a quarter note B4, a quarter note C5, and a quarter note D5. The fourth measure contains a half note E5, a quarter note F5, a quarter note G5, and a quarter note A5. The fifth measure contains a half note B5, a quarter note C6, a quarter note B5, and a quarter note A5.

Measures 29-33: The sixth system begins with a half note G3, a quarter note A3, a quarter note Bb3, and a quarter note C4. The second measure contains a half note D4, a quarter note E4, a quarter note F4, and a quarter note G4. The third measure contains a half note A4, a quarter note B4, a quarter note C5, and a quarter note D5. The fourth measure contains a half note E5, a quarter note F5, a quarter note G5, and a quarter note A5. The fifth measure contains a half note B5, a quarter note C6, a quarter note B5, and a quarter note A5.

Measures 34-38: The seventh system begins with a half note G3, a quarter note A3, a quarter note Bb3, and a quarter note C4. The second measure contains a half note D4, a quarter note E4, a quarter note F4, and a quarter note G4. The third measure contains a half note A4, a quarter note B4, a quarter note C5, and a quarter note D5. The fourth measure contains a half note E5, a quarter note F5, a quarter note G5, and a quarter note A5. The fifth measure contains a half note B5, a quarter note C6, a quarter note B5, and a quarter note A5.

Measures 39-43: The eighth system begins with a half note G3, a quarter note A3, a quarter note Bb3, and a quarter note C4. The second measure contains a half note D4, a quarter note E4, a quarter note F4, and a quarter note G4. The third measure contains a half note A4, a quarter note B4, a quarter note C5, and a quarter note D5. The fourth measure contains a half note E5, a quarter note F5, a quarter note G5, and a quarter note A5. The fifth measure contains a half note B5, a quarter note C6, a quarter note B5, and a quarter note A5.

Measures 44: The final system begins with a half note G3, a quarter note A3, a quarter note Bb3, and a quarter note C4. The second measure contains a half note D4, a quarter note E4, a quarter note F4, and a quarter note G4. The third measure contains a half note A4, a quarter note B4, a quarter note C5, and a quarter note D5. The fourth measure contains a half note E5, a quarter note F5, a quarter note G5, and a quarter note A5. The fifth measure contains a half note B5, a quarter note C6, a quarter note B5, and a quarter note A5.



110

117

122

127

132

137

143

149

155

p

f

Segue

The musical score for Violon 2 spans measures 110 to 155. The key signature is G major (one sharp). The time signature is 4/4. The score begins with a treble clef and a key signature of one sharp (F#). The music consists of several lines of notation. Measures 110-116 show a series of eighth notes and quarter notes, with a piano (p) marking at measure 116. Measures 117-121 continue with eighth notes and quarter notes. Measures 122-126 show a series of eighth notes and quarter notes. Measures 127-131 continue with eighth notes and quarter notes. Measures 132-136 show a series of eighth notes and quarter notes. Measures 137-142 show a series of eighth notes and quarter notes, with a forte (f) marking at measure 137. Measures 143-148 show a series of eighth notes and quarter notes. Measures 149-154 show a series of eighth notes and quarter notes. The piece concludes with a 'Segue' instruction at measure 155.

Allegretto Pastorale gracioso - Presto

6/8

p

7

f

13

p

19

4

29

p

f

34

4

p

f

43

p

49

55

f

Presto

