

# Horn Concerto in E $\flat$ Major, K.447

Bass

Wolfgang Amadeus Mozart (1756-1791)

Allegro (♩ = 112)

6

13

17

21

26

35

42

49

59

64

69

74

79

*p*

*cresc.* - - - - - *f*

**A**

*p*

*p*

*f*

*cresc.* - - - - -

**B**

4

**C**

*f*

*p*

**D**

*p*

*p*

3

2

88

95

101

106

111 **E**

117 *f*

122 *p* **F**

130 2

136 4 **G**

145

150 *f* *p* **H**

156

162 3 3 3 3 *cresc.*

167 *f*

172

177

**Larghetto** (♩ = 80)

Romanze



6



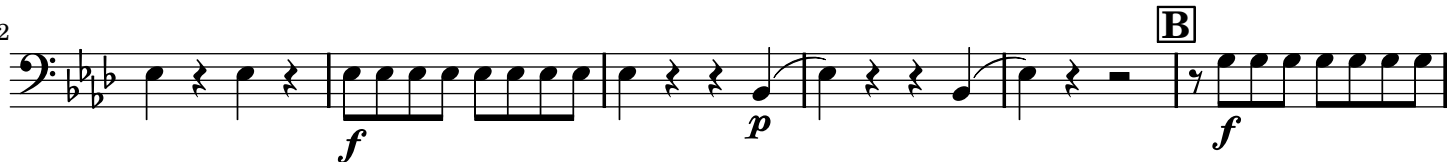
11



16



22



28



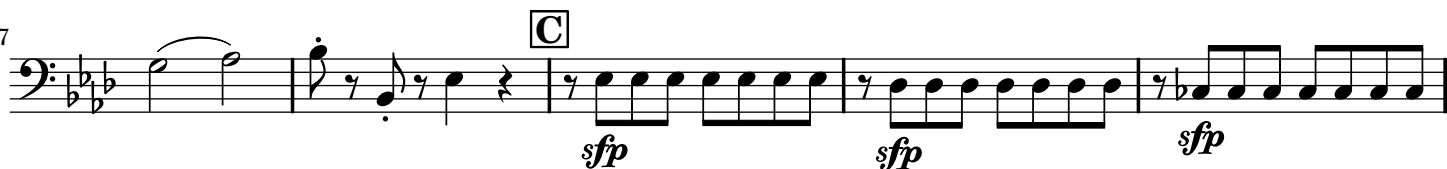
34



41



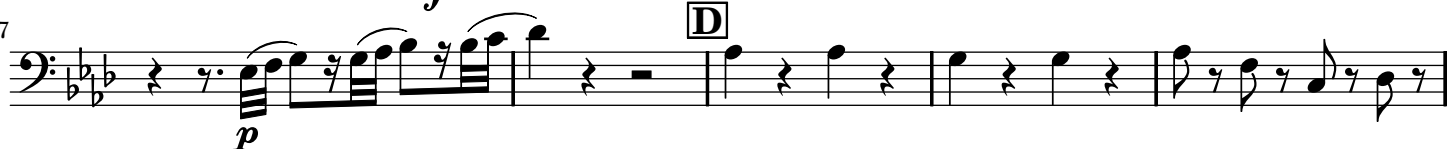
47



52



57



62



67

72

**Allegro** (♩. = 112)

Rondo

*p*

7

*f* *p*

15

*f* *p* *f*

22

*p* *f*

29

*p* **A**

36

*p*

44

*p* **B** 9

61

*p*

68

*f* **C** *p*

76

*p*

84

*f* *p*

92

*f* **D**

99 *p*

107

115

124 **E** 7

138 *f* *p*

146 *f* *p* **F** *f*

153 *p*

161 *f* *p*

169 **G** 3 *p*

178 3 **H**

188 *f* *p* *f*

195 *f*

202