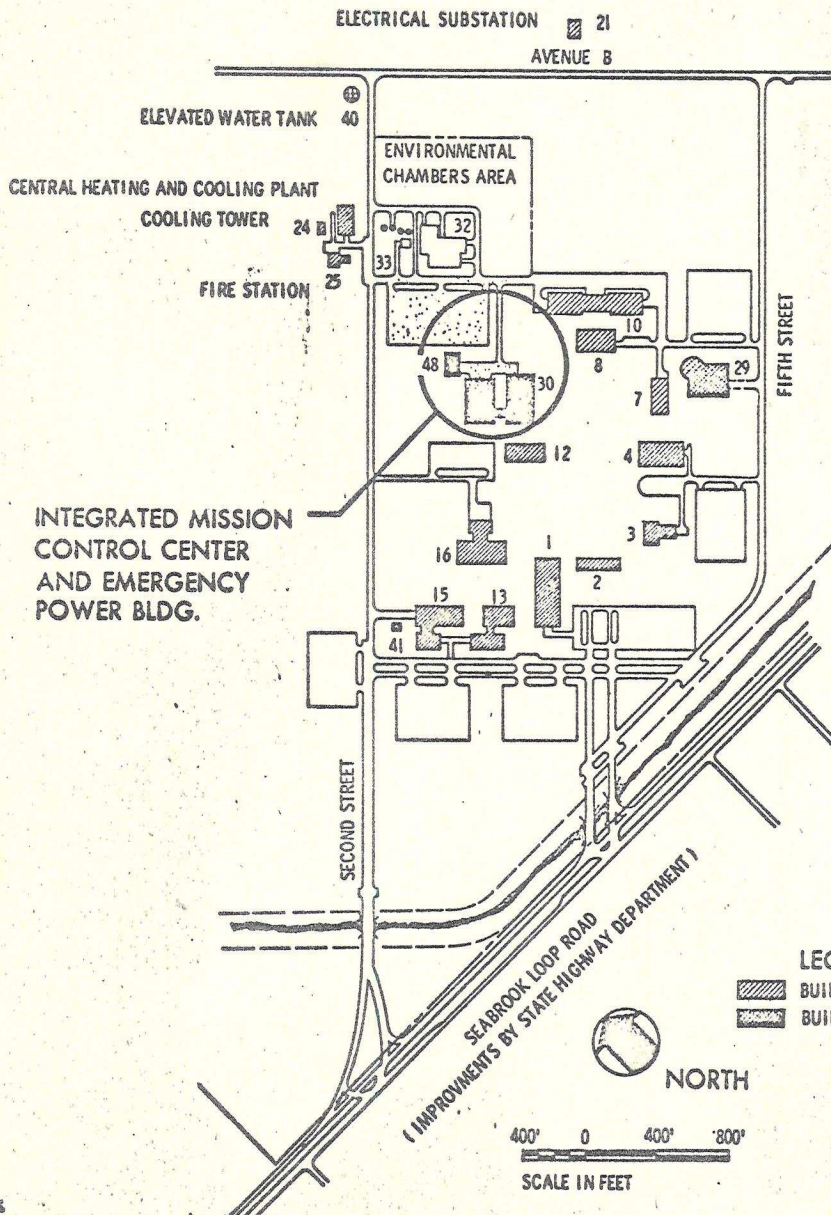




INTEGRATED
MISSION CONTROL CENTER



BUILDING INDEX

1. AUDITORIUM
2. PROJECT MANAGEMENT
3. CAFETERIA NO. 1
4. FLIGHT OPERATIONS OFFICE
7. LIFE SYSTEMS LAB
8. TECH SERVICES OFFICES
10. TECH SERVICES SHOP
12. CENTRAL DATA OFFICE
13. SYSTEMS EVALUATION LAB
15. SYSTEMS EVALUATION
16. SPACECRAFT RESEARCH OFFICE AND LAB
19. SUPPORT OFFICE
20. SUPPORT SHOPS AND WAREHOUSE
21. ELECTRICAL SUBSTATION
22. WATER TREATMENT
23. SEWAGE TREATMENT
24. CENTRAL HEATING AND COOLING PLANT
25. FIRE STATION
28. BARGE DOCK
29. FLIGHT ACCELERATION
30. INTEGRATED MISSION CONTROL CENTER
32. ENVIRONMENTAL TEST LAB
33. REFRIGERATION BUILDING
39. GROUND WATER STORAGE
40. ELEVATED WATER TANK
41. GAS STORAGE
48. EMERGENCY POWER BUILDING

LEGEND

-  BUILDINGS EXISTING OR UNDER CONTRACT
-  BUILDINGS FISCAL YEAR 1963

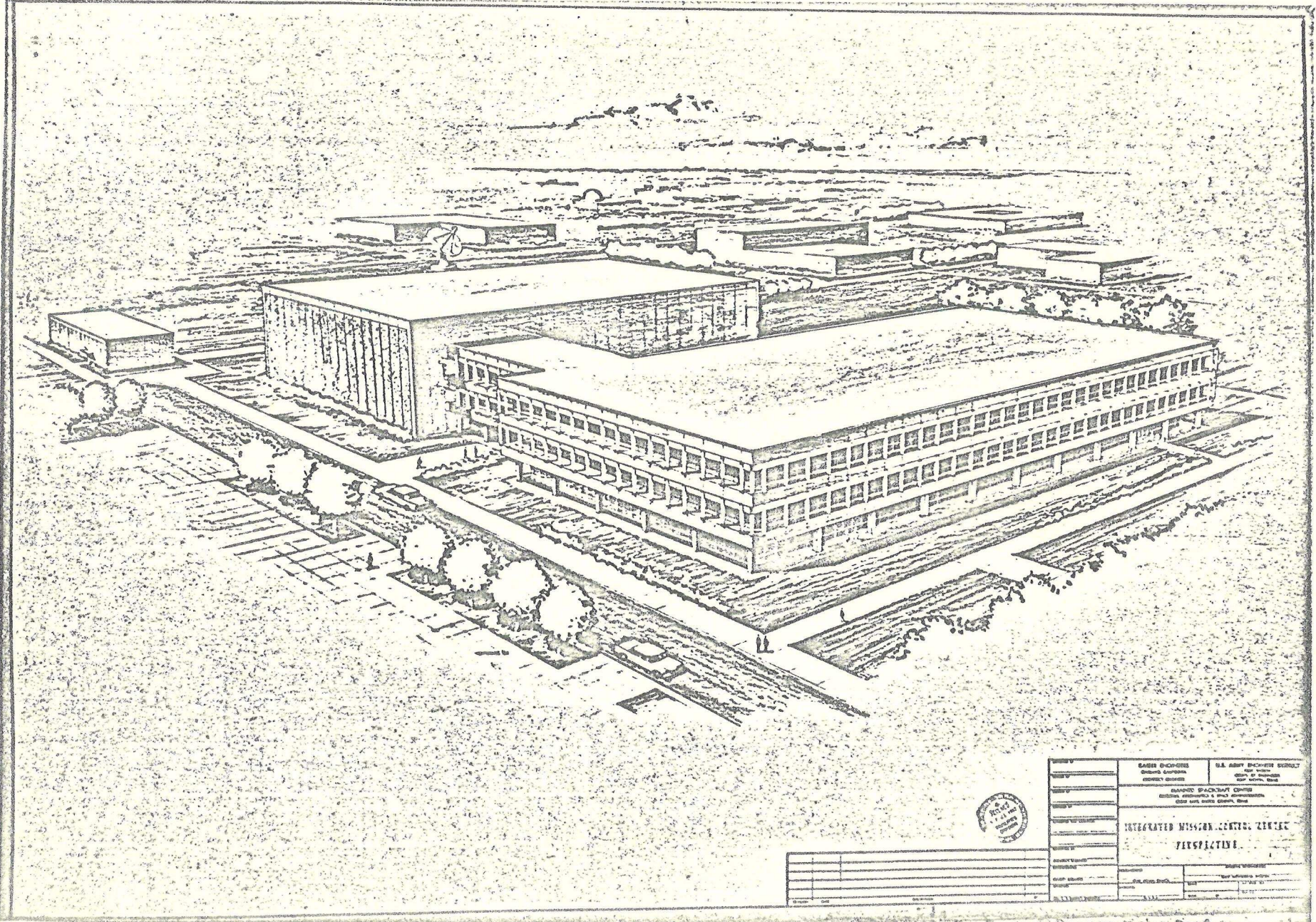


NORTH



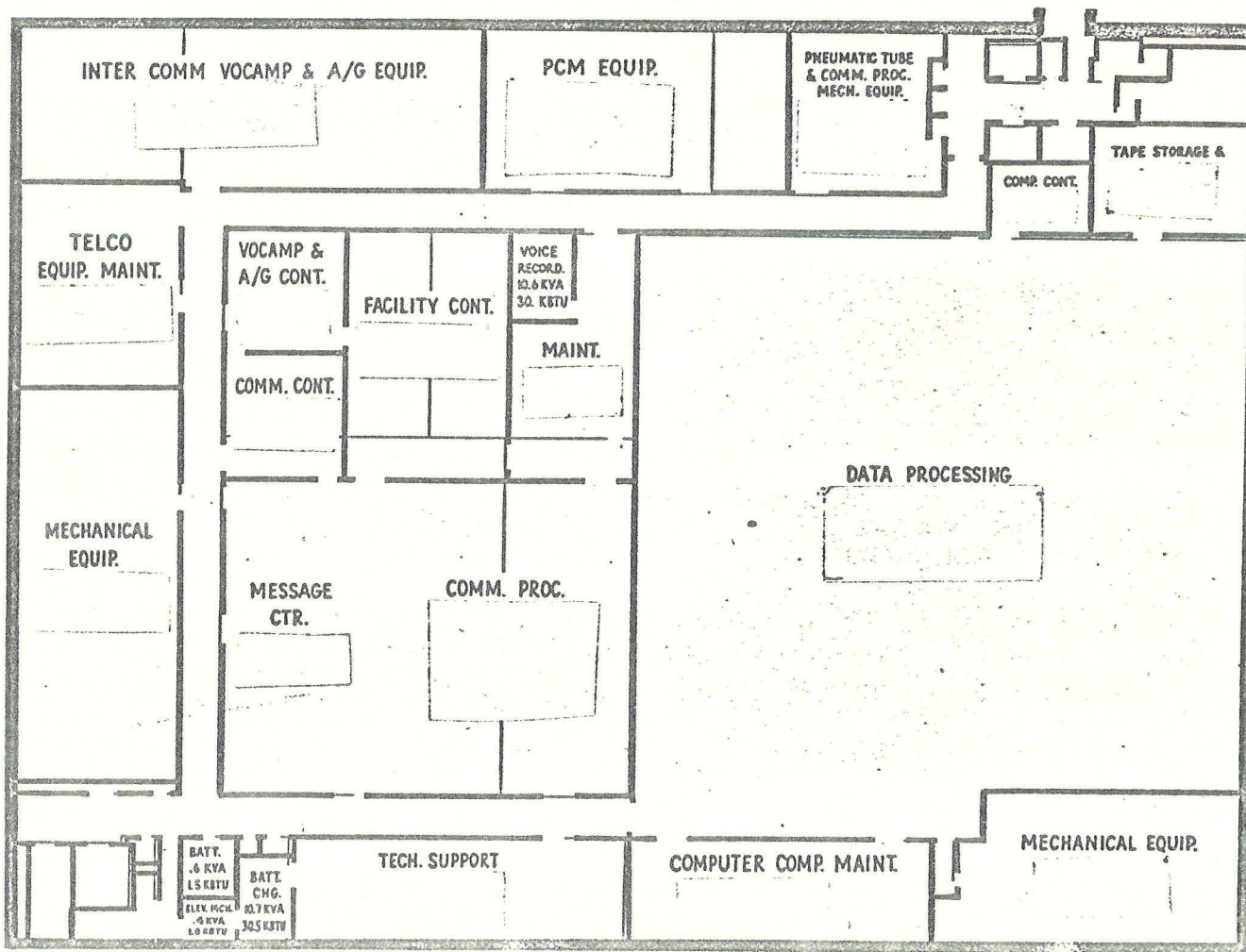
- Site Layout

NASA
S-62-3400



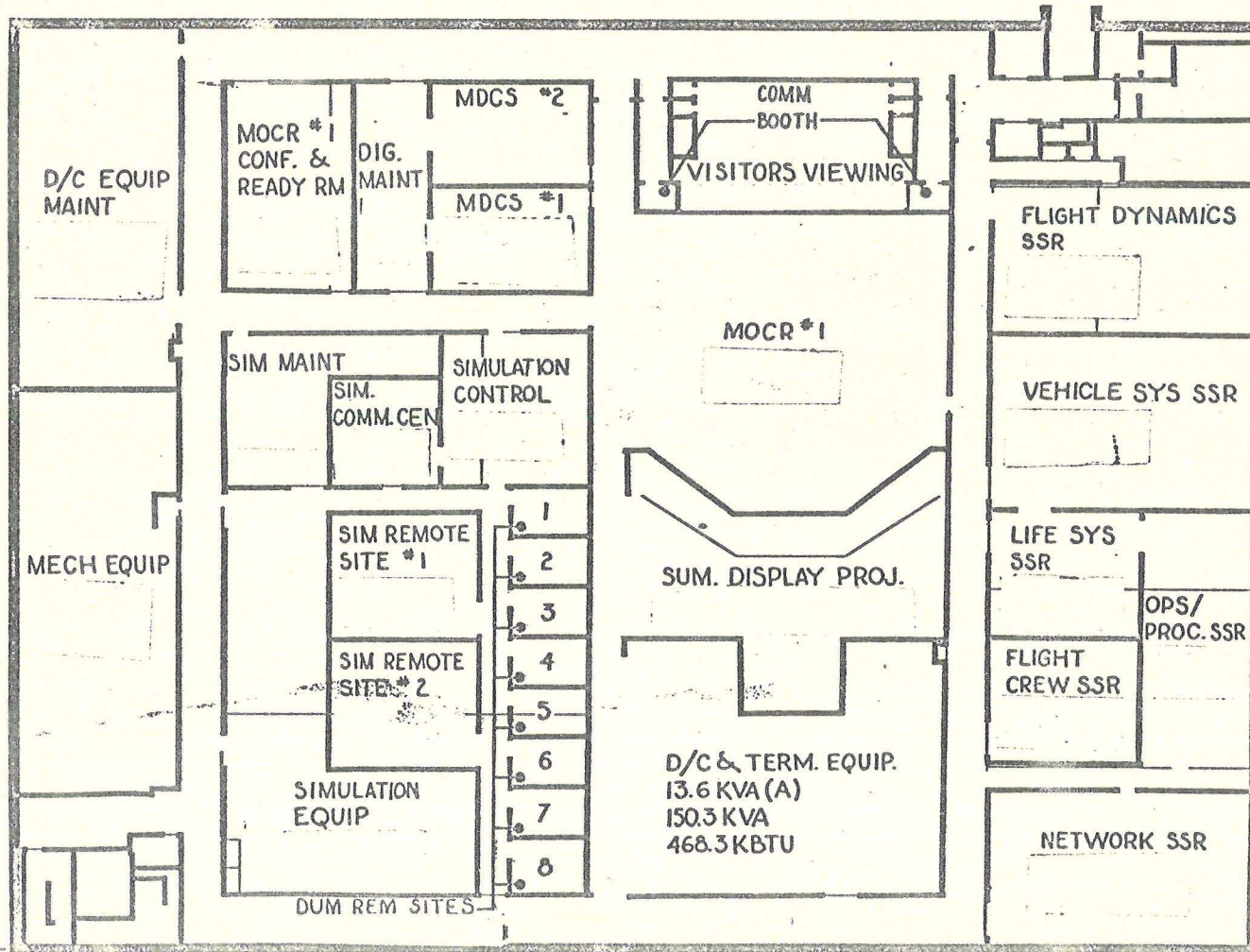
NO. _____	BASE ENGINEER General Engineer General Engineer	U.S. ARMY ENGINEER SCHOOL Fort Belvoir, Illinois Fort Belvoir, Illinois
DATE _____	PLANNING BRANCH OFFICE GENERAL ENGINEERING & ARCHITECTURE GENERAL ENGINEER, ARCHITECT, ENGINEER	
INTEGRATED MISSION CONTROL CENTER PERSPECTIVE		
DESIGNED BY _____	DRAWN BY _____	
CHECKED BY _____	DATE _____	
SCALE _____	SHEET NO. _____	
PROJECT NO. _____	JOB NO. _____	

MOW 1 ST FLOOR ROOM PLAN



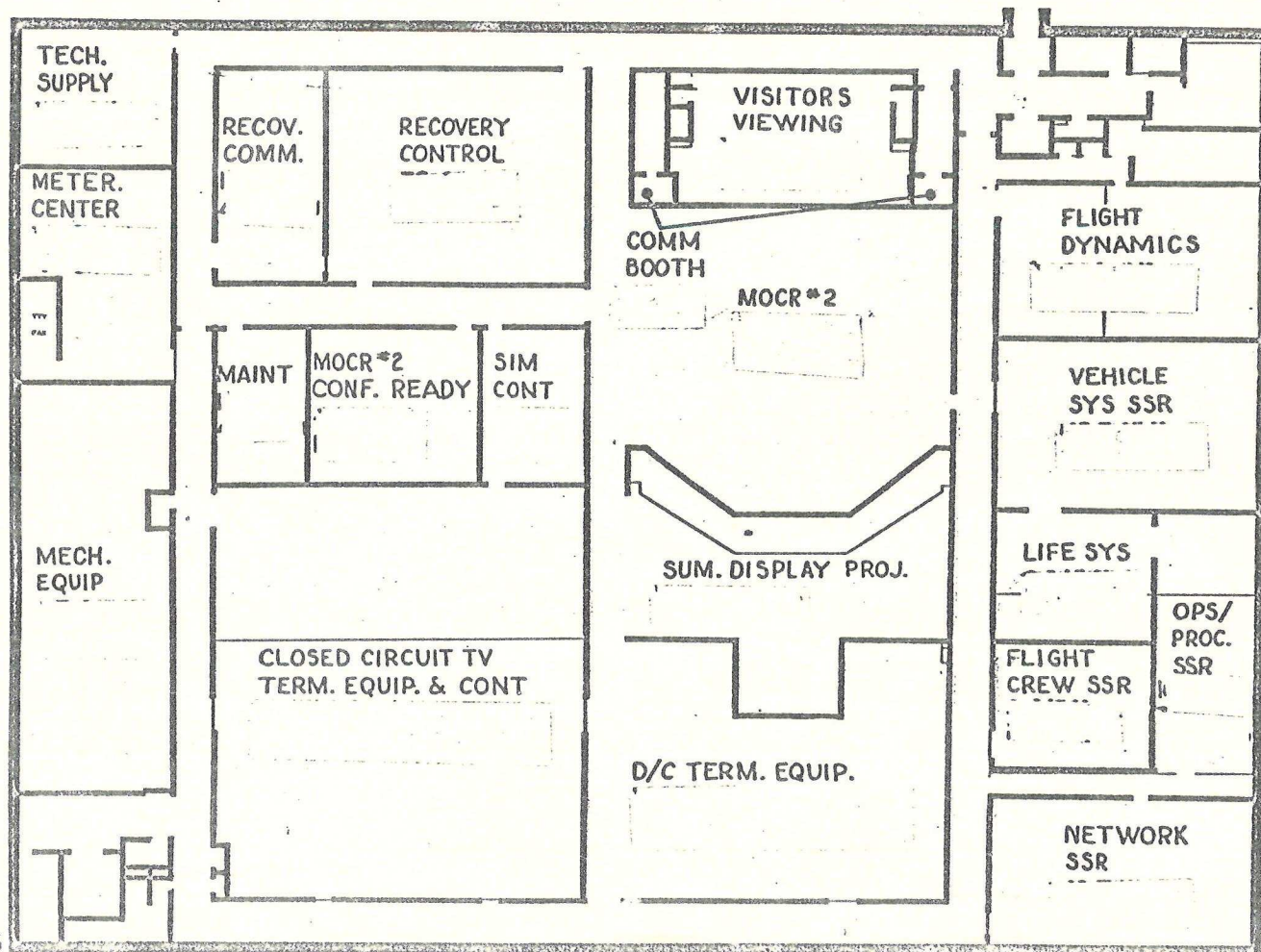
TOTAL 741.6 KVA (A)
 611.2 KVA (B)
 4,127.2 KBTU

MOW 2ND FLOOR ROOM PLAN



TOTAL
 44.5 KVA (A)
 681.3 KVA (B)
 2,342.2 KBTU

MOW 3RD FLOOR ROOM PLAN



TOTALS
 29.6 KVA(A)
 915.6 KVA(B)
 3,301 KBTU