

SUNDAY POST-DISPATCH

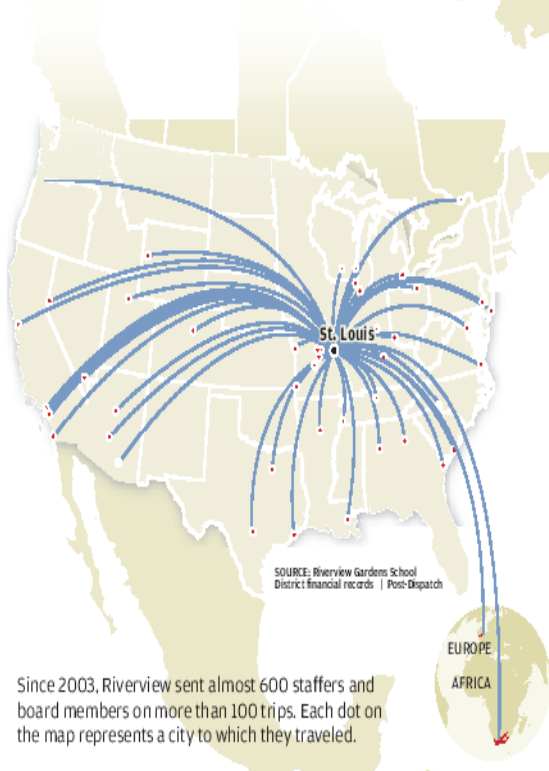
\$130+
OF COUPONS
INSIDE

JUNE 3, 2007 | FOUNDED BY JOSEPH PULITZER IN 1878 | STLTODAY.COM | \$1.50

JAUNTS AROUND THE WORLD. \$8 GLASSES OF PINOT GRIGIO. \$50 PEDICURES.

In four years, **Riverview Gardens** sent staffers to more than 60 cities.

And taxpayers paid the tab for \$1.7 million



Since 2003, Riverview sent almost 600 staffers and board members on more than 100 trips. Each dot on the map represents a city to which they traveled.

Get more

STLtoday.com/links Find more detail on trips taken by board members and staffers in the Riverview Gardens School District.

By David Hunn and Jaimi Dowdell
ST. LOUIS POST-DISPATCH

MOLINE ACRES • Late last year, 17 Riverview Gardens school leaders traveled to an education conference at a resort and spa in Orlando, Fla.

They attended seminars. They went to workshops.

They charged room-service meals to the district and tagged hotel bills with long-distance calls. A principal and a school board member billed the district for \$50 pedicures.

Then the board member, Marlene Terry, treated herself — and other district leaders, she said — to a \$416 dinner.

The total bill for the six-day event: at least \$28,000.

That same November week, 13 other staff members flew to Chicago for a conference.

All the while, Missouri state auditors sat in a side room at the school district's headquarters, scanning thousands of records. They would eventually conclude that the

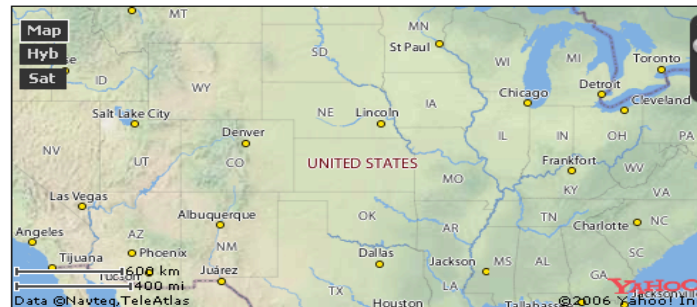
PLEASE SEE **RIVERVIEW GARDENS** | A10

Riverview online: The vision and the reality

Riverview Gardens School District travel, 2003-2007

Over these four years, Riverview paid for travel expenses for almost 600 staffers and board members on more than 100 trips, to at least 60 cities, from Lake of the Ozarks to New York to San Francisco to Ottawa to Cape Town, South Africa. This map represents some of that travel. This is not meant to be a comprehensive listing of all money spent at each location, but rather an indicator of district travel.

Scroll the records and click dollar amounts below to see details on each trip. Plot the trip location with the "map it" link. Click column headers to sort trips numerically or alphabetically. NOTE: When the return date was unknown, the departure date was used in this database.



Amount	City	State (or country)	Trip	Associated with trip	
\$2,397	New Orleans	LA	AASA Annual Conference, Feb. 20-23, 2003 - New Orleans, La.	Debbie Wallace; Henry Williams; Marlene Terry; Richard Hunt; Rudy Smith; Tommie Pierson	Map it
\$699	London	England	UNKNOWN	Henry Williams	Map it
\$2,925	San Francisco	CA	63rd NSBA Annual Conference And Exposition, April 5 - 8, 2003 - San Francisco, Calif.		Map it
\$667	Galveston	TX	Sopris West Educational Services Summer Training, 2003	One staff	Map it
\$1,917	Sedona	AZ	"Education As A Civil Right," By Syfr Corp., 2003	Henry Williams	Map it

[1](#) [2](#) [3](#) [4](#) [5](#) [6](#) [7](#) [8](#) [9](#) [10](#) ▶ ▶▶

Records 1-5 of 103

Social Network Analysis

Allows you to...

- visualize connections
- analyze relationships
- filter data in a new way – clear out the noise
- discover potential sources of power
- find new ways to look at the same old stories

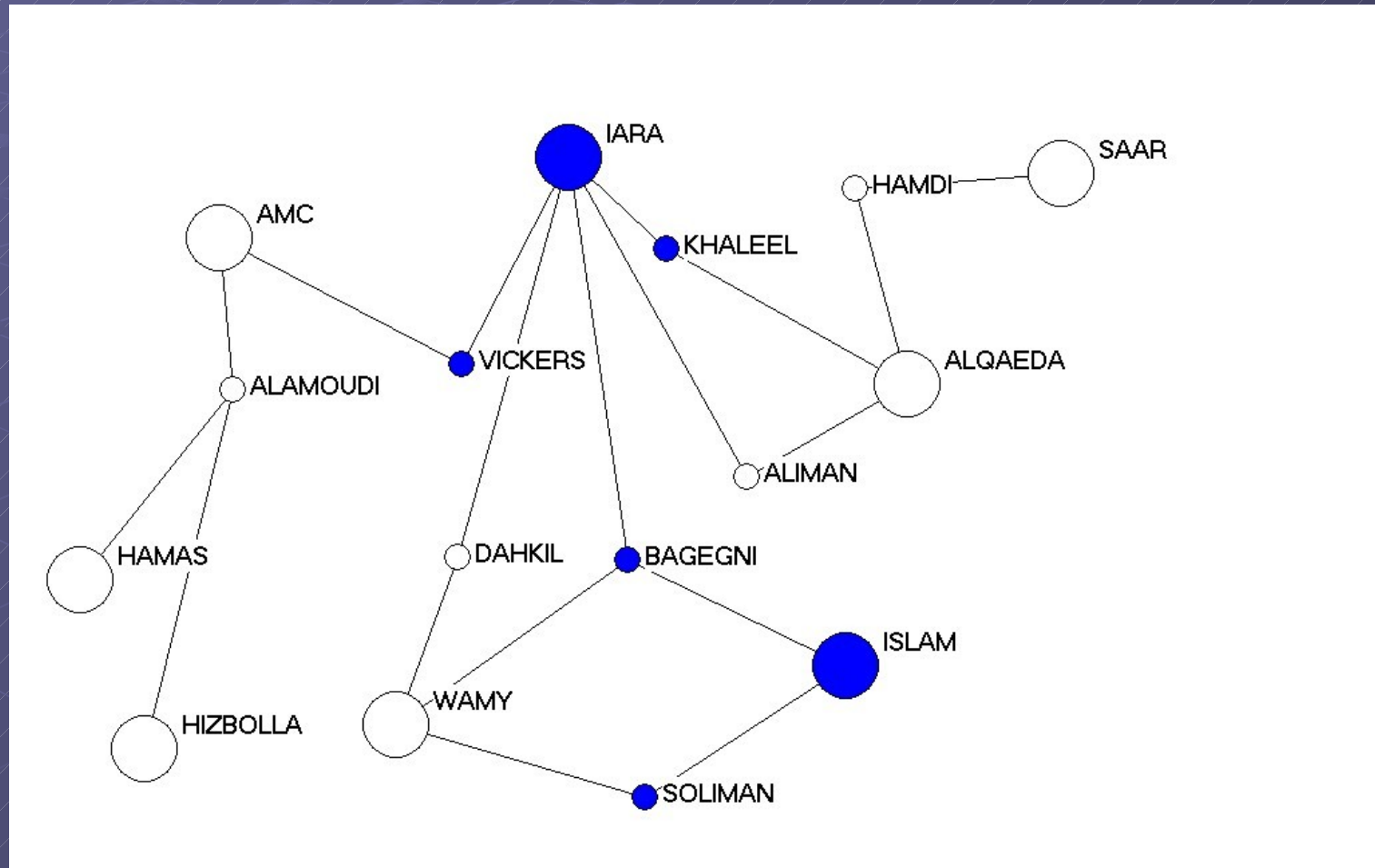
Data Sources

- local government Web sites
- secretary of state filings
- U.S. Securities and Exchange Commission (www.sec.gov/edgar.shtml)
- Form 990s (www.guidestar.org)
- news archives
- corporate Web sites
- property and court records

Basic applications

- Analysis
- Simple visualization

Possible Columbia terror links



U.S. Treasury Designation: IARA

FROM THE OFFICE OF PUBLIC AFFAIRS

October 13, 2004
JS-2025

Treasury Designates Global Network, Senior Officials of IARA for Supporting bin Laden, Others

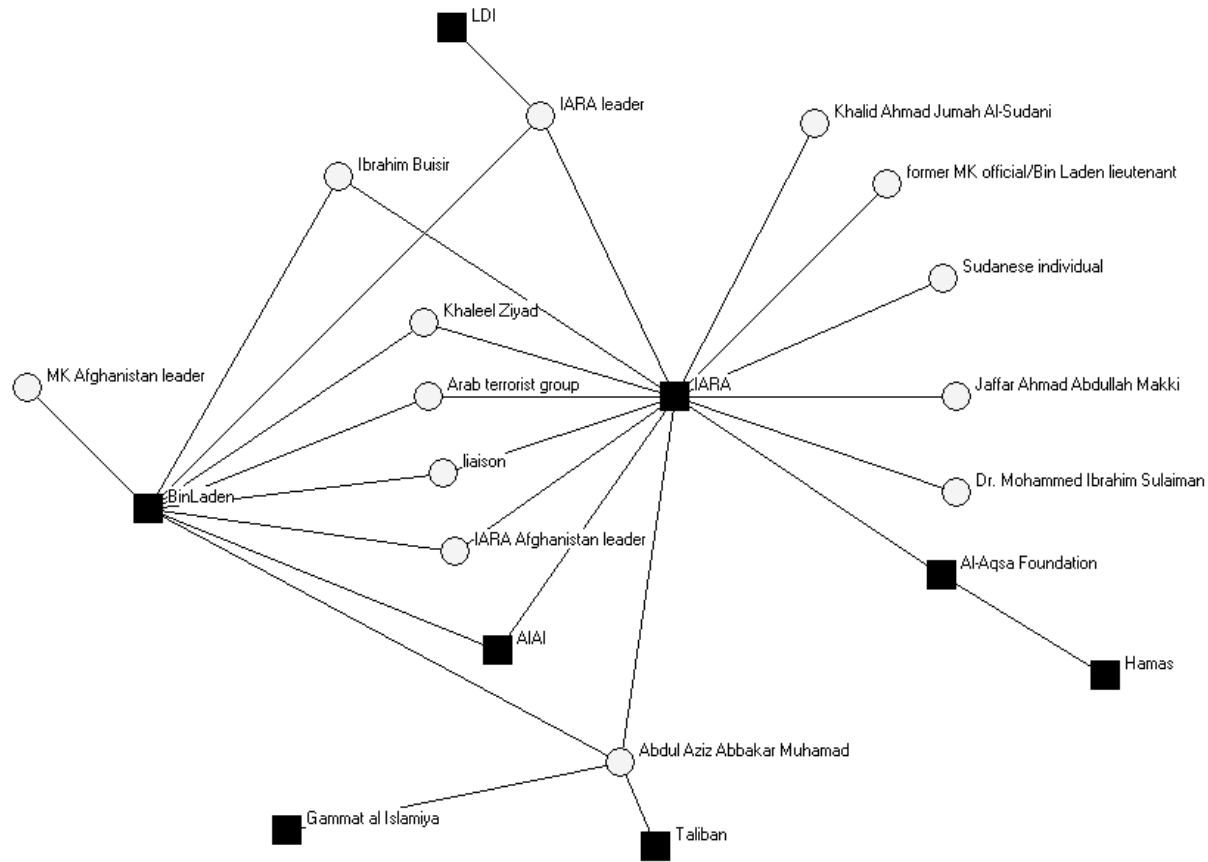
The U.S. Department of the Treasury today designated the worldwide network of the Islamic African Relief Agency (IARA), along with five senior officials, pursuant to E.O. 13224. This action blocks all accounts, funds and assets of IARA in the United States and criminalizes the provision of money or other types of support to any of its offices.

"This is an excellent example of how U.S. Government agencies coordinate their efforts to achieve the maximum impact against supporters of terrorism. The Treasury Department has been working closely with its colleagues in other agencies to ensure that, as a government, we do everything possible to shut down the flow of money to terrorists," said Stuart Levey, Treasury's Under Secretary for the Office of Terrorism and Financial Intelligence (TFI).



	Column1	Column2
▶	Dr. Mohammed Ibrahim Sulaiman	IARA
	Jaffar Ahmad Abdullah Makki	IARA
	Abdul Aziz Abbakar Muhamad	IARA
	Khalid Ahmad Jumah Al-Sudani	IARA
	Ibrahim Buisir	IARA
	Ibrahim Buisir	BinLaden
	Abdul Aziz Abbakar Muhamad	BinLaden
	Abdul Aziz Abbakar Muhamad	Gammat al Islamiya
	Abdul Aziz Abbakar Muhamad	Taliban
	IARA Afghanistan leader	BinLaden
	MK Afghanistan leader	BinLaden
	IARA Afghanistan leader	IARA
	liaison	BinLaden
	liaison	IARA
	Arab terrorist group	IARA
	Arab terrorist group	BinLaden
	former MK official/Bin Laden lieutenant	IARA
	IARA leader	BinLaden
	IARA leader	LDI
	IARA leader	IARA
	Sudanese individual	IARA
	Khaleel Ziyad	IARA
	Khaleel Ziyad	BinLaden
	AlAI	IARA
	AlAI	BinLaden
	Al-Aqsa Foundation	IARA
	Al-Aqsa Foundation	Hamas

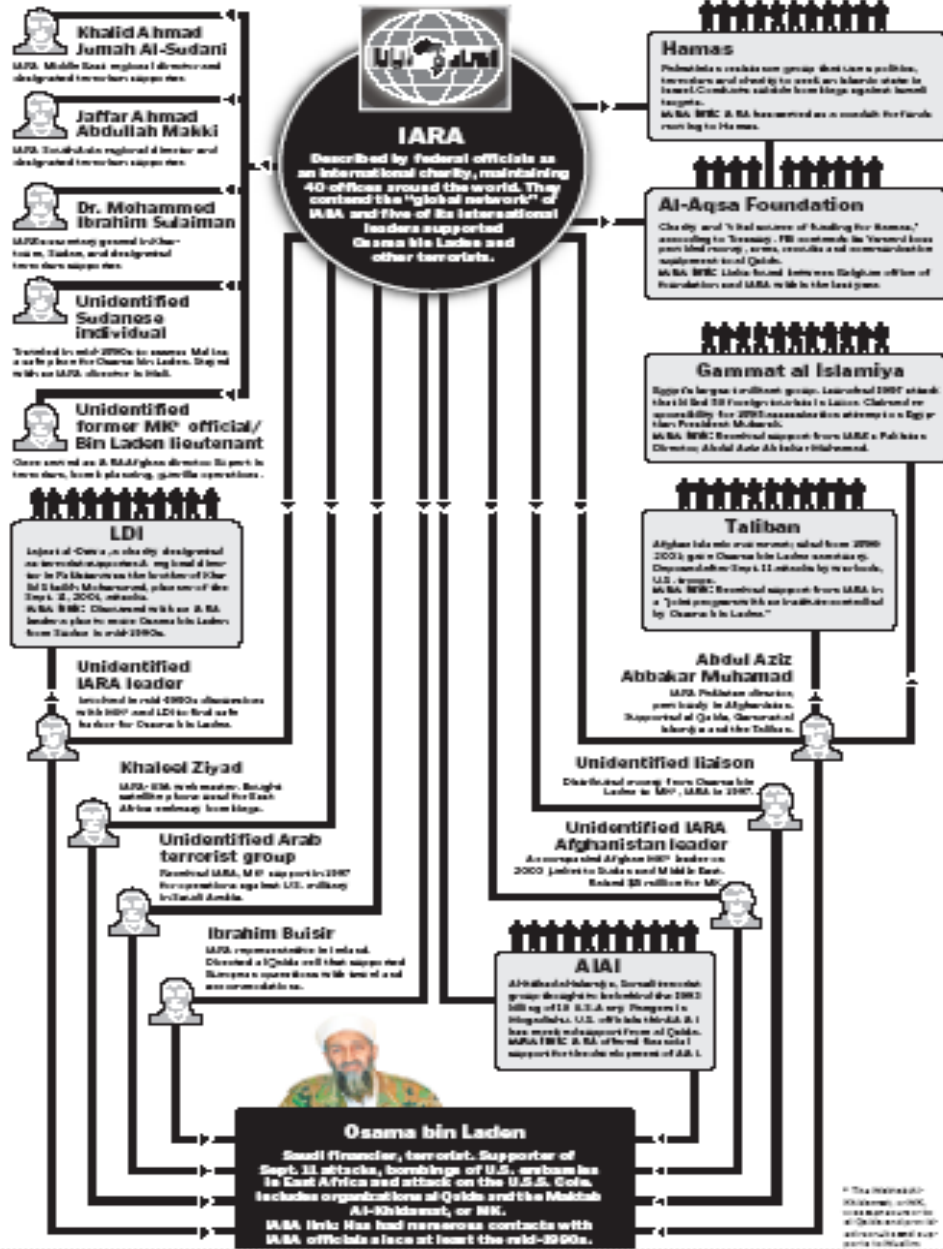
IARA global network: take two



IARA CONNECTIONS ALLEGED WORLDWIDE

The relationships depicted below were described in a recent Treasury Department document that designated the Islamic American Relief Agency as a supporter of terrorism. Information about Khalid Ziyad was taken from federal court records in New York. Treasury included the Islamic American Relief Agency-USA of Columbia, Mo., within the IARA charity network. However, charity officials in Columbia have strongly denied supporting terrorism.

Final graphic



Tampa Bay Tribune

- Leadership in the Bay area: nonprofit, corporate and government
- Who are the key players? Any surprises?

They Run Richmond

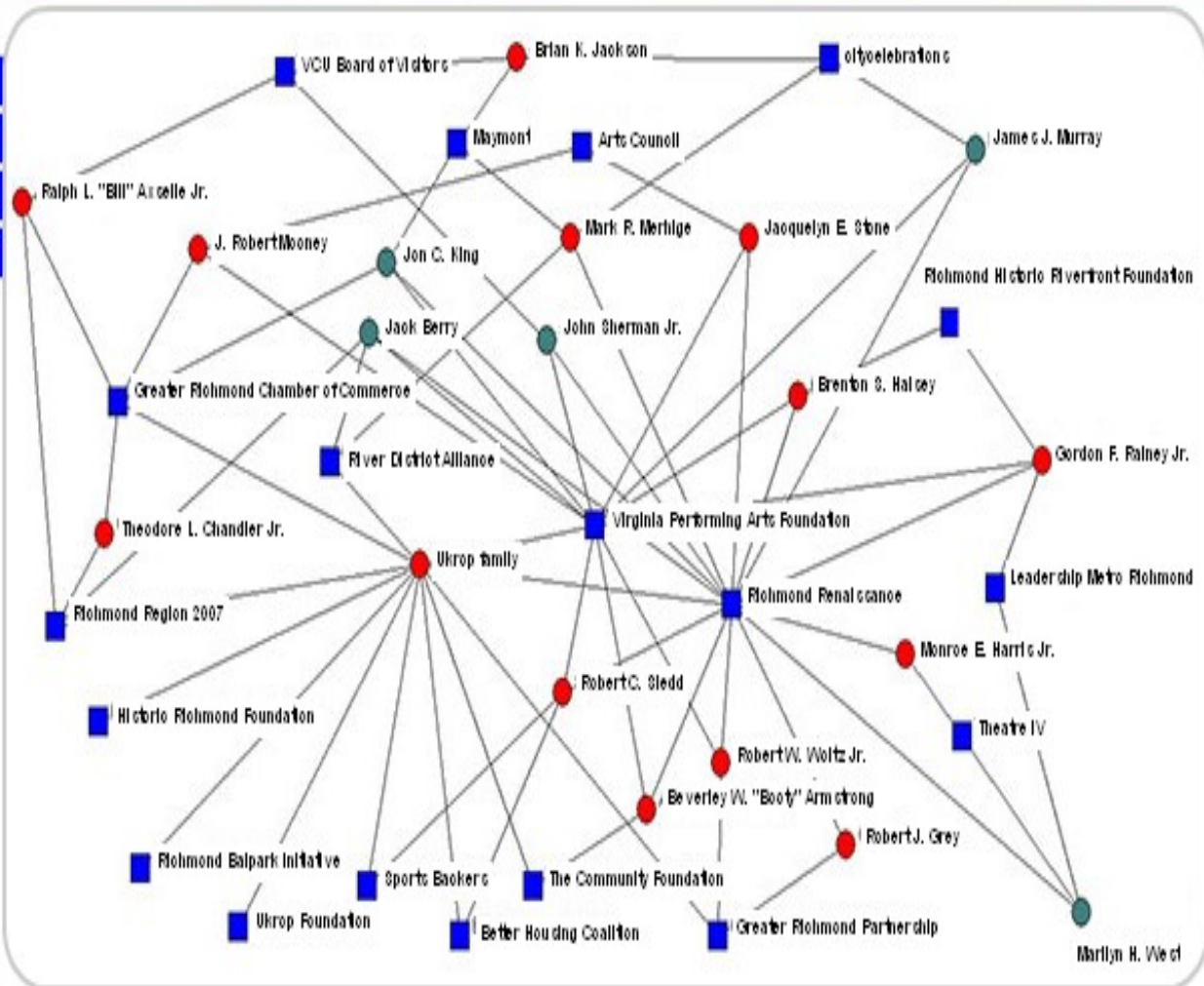
Credits

● Contributed to Wilder campaign

● Did not contribute to Wilder campaign

- 1
- 2
- 3
- 4

This chart shows people with connections to at least three organizations. Put your mouse over the dots and squares to get information on that person or organization. Click on the circle or square to see the connections.

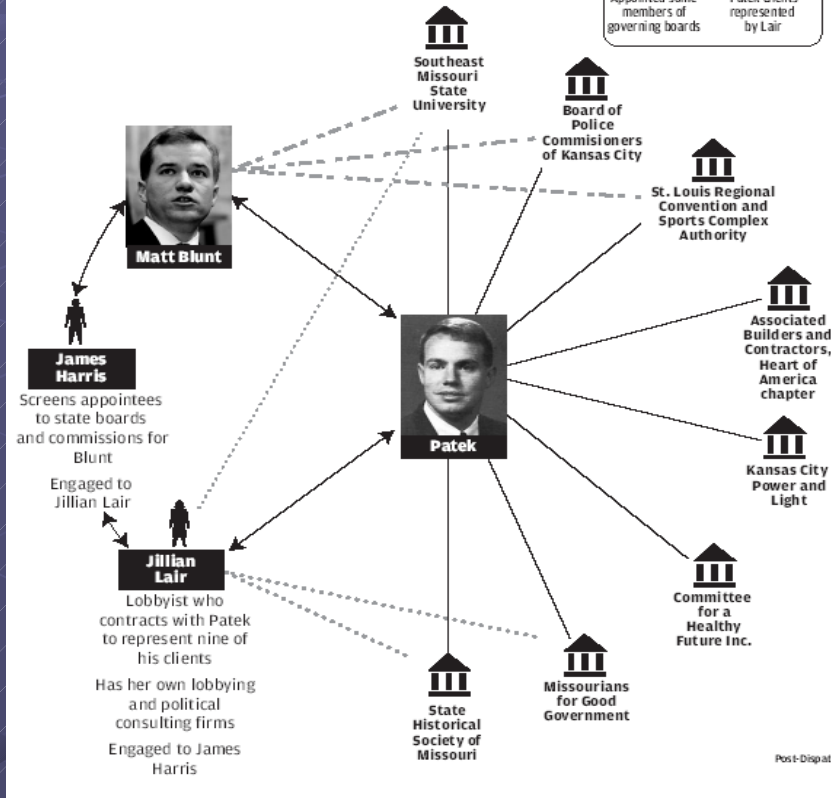


Jewell Patek

A prominent lobbyist and his connections

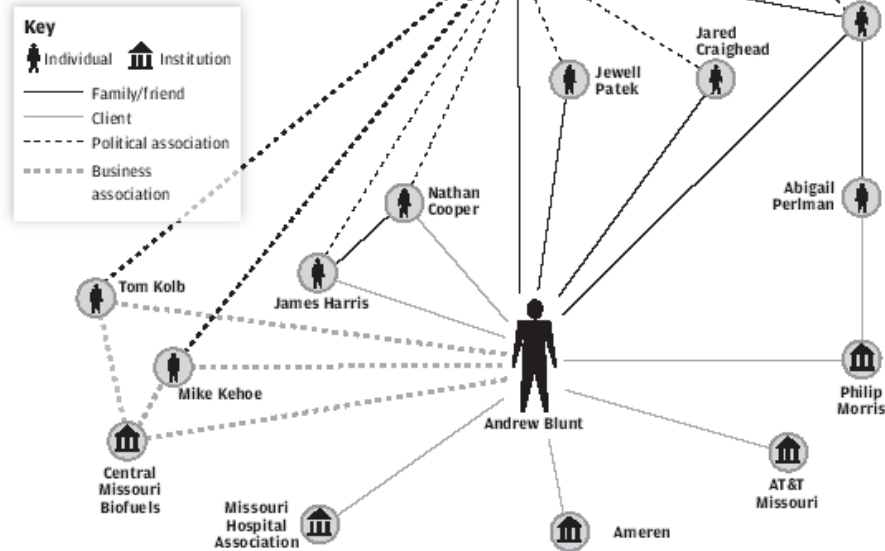
Jewell Patek served in the House with Matt Blunt. Patek was an aide to Blunt when Blunt was secretary of state. Patek now is a lobbyist with 25 corporate, governmental and nonprofit clients. He also has a political consulting firm that has raised money for Blunt's campaign. Democrats suspect that Blunt is steering clients to Patek's firm, an accusation that Blunt denies.

KEY



Andrew Blunt, a connected lobbyist

Andrew Blunt is a successful lobbyist with widespread connections to many of Missouri's political powerbrokers and major corporations. He says his family ties have little to do with his professional success.

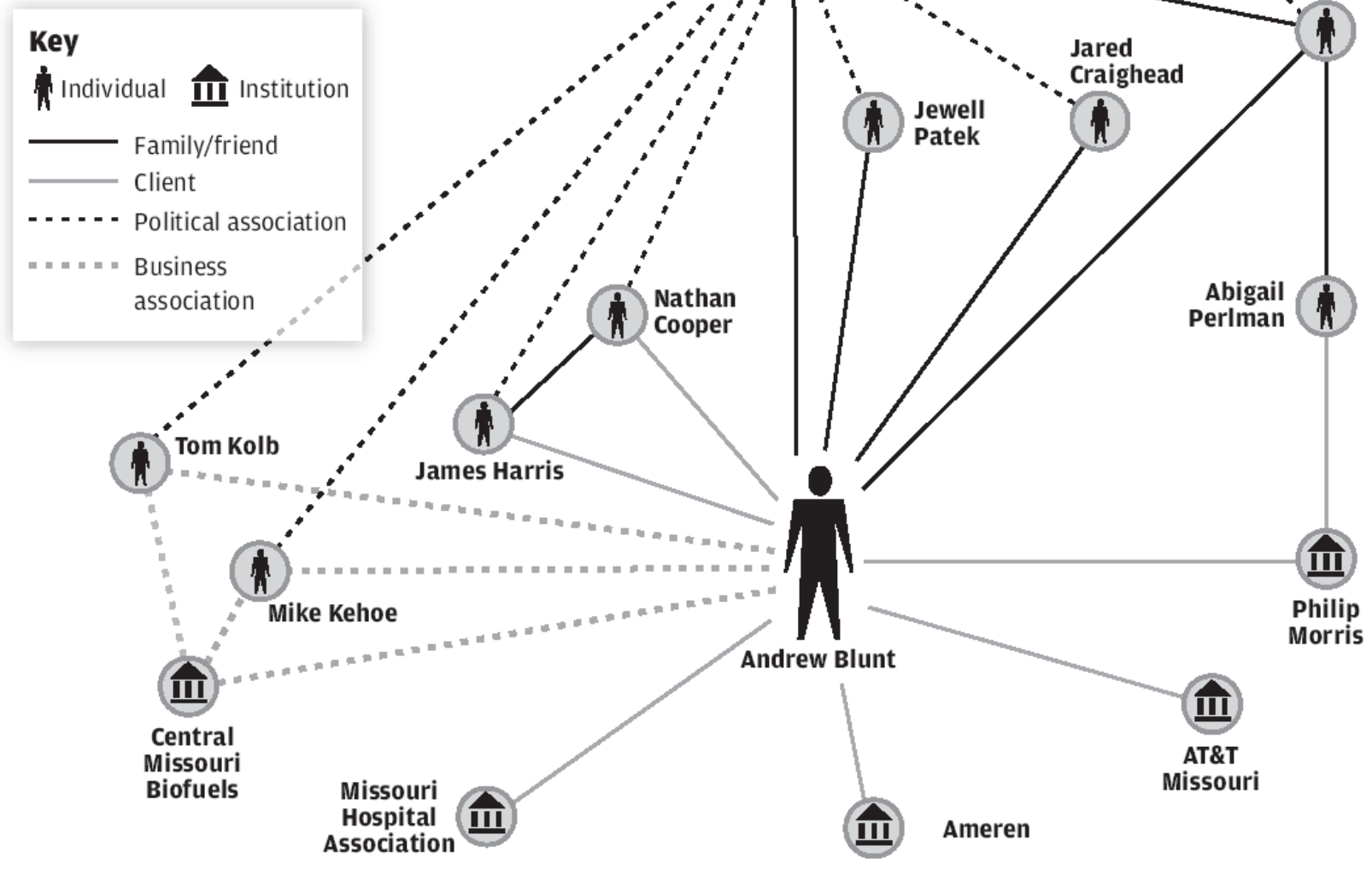


Relationship		Notes
Roy Blunt	Andrew Blunt	U.S. House majority whip and father to Andrew and Matt Blunt
Matt Blunt	Andrew Blunt	Governor of Missouri and Andrew's brother
James Harris	Andrew Blunt	Worked under Andrew as political director for Matt Blunt's 2004 campaign
James Harris	Matt Blunt	Until recently was Matt Blunt's appointment director (also see above)
Jewell Patek	Andrew Blunt	Friends and fellow lobbyists of the Missouri Legislature
Jewell Patek	Matt Blunt	Friends and served together in Missouri Legislature
Jared Craighead	Andrew Blunt	Friends since childhood
Nathan Cooper	Andrew Blunt	Cooper is a state legislator and among those Andrew lobbies
James Harris	Nathan Cooper	Friends while attending St. Louis University
Nathan Cooper	Matt Blunt	Cooper helped some of his business associates get Blunt appointments
Mike Kehoe	Matt Blunt	Appointed by Matt Blunt to the Missouri Highways and Transportation Commission; owns Kehoe Auto Group in Jefferson City
Tom Kolb	Matt Blunt	Contributed to Matt Blunt's campaign; Kolb is co-owner of Jefferson City Oil Company Inc.
Mike Kehoe	Andrew Blunt	Partners of Central Missouri Biofuels LLC (also see above)
Tom Kolb	Andrew Blunt	Partners of Central Missouri Biofuels LLC (also see above)
Jared Craighead	Matt Blunt	Blunt OK'd Craighead as executive director of Missouri Republican Party
Abigail Perlman	Roy Blunt	Wife of Roy Blunt
Philip Morris	Abigail Perlman	Perlman has been a lobbyist for Philip Morris

Andrew's clients include: Philip Morris, Ameren, Missouri Hospital Association, AT&T of Missouri

Andrew Blunt, a connected lobbyist

Andrew Blunt is a successful lobbyist with widespread connections to many of Missouri's political powerbrokers and major corporations. He says his family ties have little to do with his professional success.



Dubious Charities Raise Millions

 <http://www.oeregister.com/multimedia/gold/>

For more information

- IRE social network analysis Web page:
www.ire.org/sna
- UCINET: www.analytictech.com
- jdowdell@post-dispatch.com